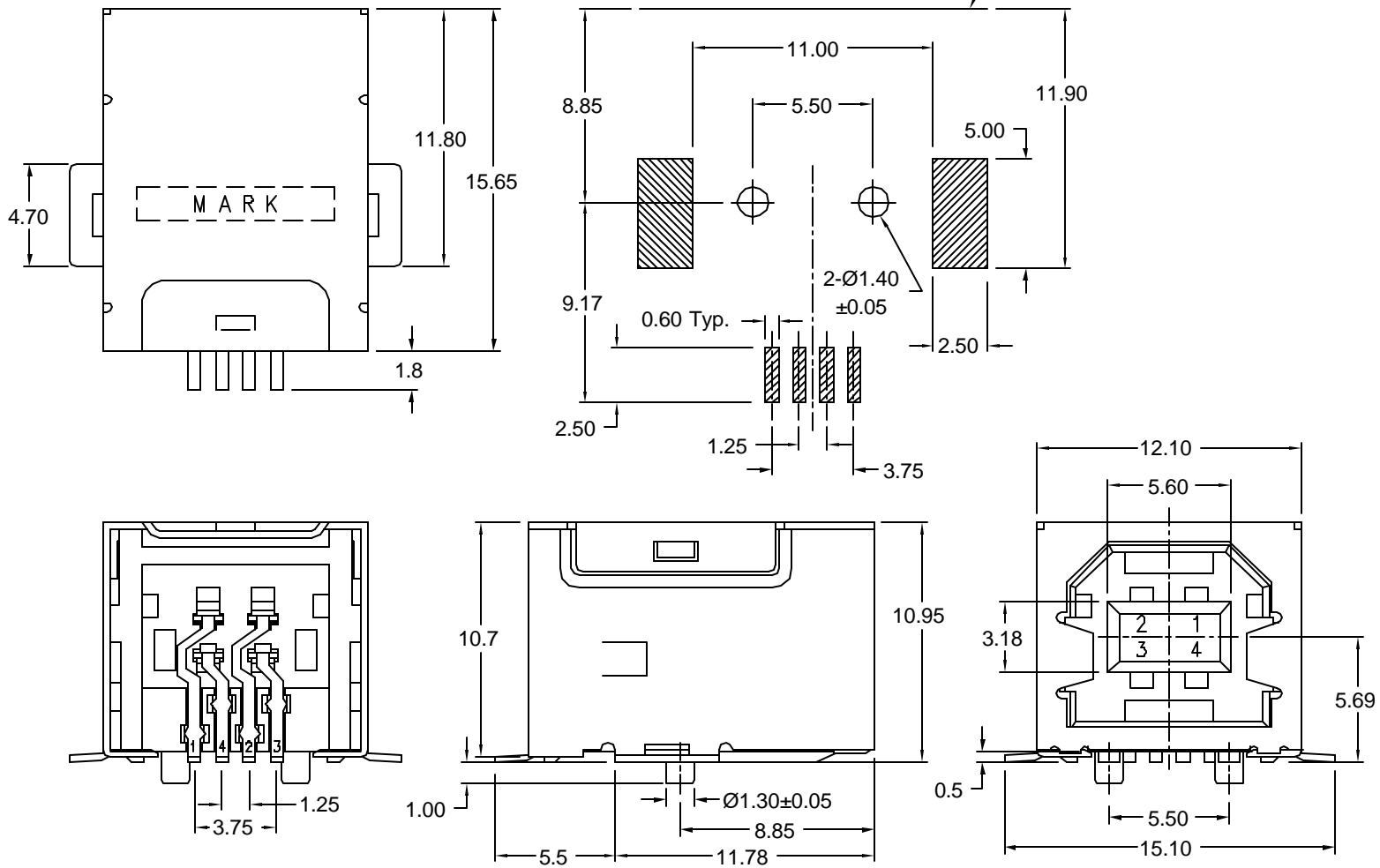


Recommended PCB Layout  
(component side)



**Material and Finish**

Shield: copper alloy,  
100-200u" nickel plated  
over 100u" copper

Insulator: UL94V-0 rated  
High Temp. Nylon,  
reflow process compatible,  
Color\* - white or black

Recommended Reflow Temperature:  
230°C for 30 seconds  
260°C maximum

Contact Material:  
phosphor bronze

Contact Plating Options:  
Standard: gold flash on  
contact area, 120u" tin/lead  
on solder tails, all over  
50u" nickel underplate  
30 Option: 30u" gold on  
contact area, 120u" tin/lead  
on solder tails, all over  
50u" nickel underplate

**Specifications**

Rated Voltage:  
30V AC (rms)

Contact Current Rating:  
1A max.

Contact Resistance:  
30 milliohms max.

Insulation Resistance:  
1000 Megohms min.

Dielectric Withstanding:  
500V AC

Insertion Force:  
3.57kg max.

Extraction Force:  
1.02kg min.

Operating Temperature:  
-25°C to 80°C

Part Number	Contact Area Plating Finish	*Insulator Color	Packaging
KUSB-SMT-BS1N-W	Gold Flash (standard)	White	Bulk (trays, standard)
KUSB-SMT-BS1N-W30	30u" Gold (30 option)	White	Bulk (trays, standard)
KUSB-SMT-BS1N-B	Gold Flash (standard)	Black	Bulk (trays, standard)
KUSB-SMT-BS1N-B30	30u" Gold (30 option)	Black	Bulk (trays, standard)
KUSB-SMTBS1NWTR	Gold Flash (standard)	White	Tape-and-Reel (TR option)
KUSB-SMTBS1NW30TR	30u" Gold (30 option)	White	Tape-and-Reel (TR option)
KUSB-SMTBS1NBTR	Gold Flash (standard)	Black	Tape-and-Reel (TR option)
KUSB-SMTBS1NB30TR	30u" Gold (30 option)	Black	Tape-and-Reel (TR option)

Tolerances
X.X ± 0.35
X.XX ± 0.25
Unless Stated Otherwise



REVISION	DATE	DESCRIPTION	DRAWN BY	CHECKED BY	UNITS
C5	6/25/04	ECO#04-029	K. Wallace	H. MA	mm
D1	8/29/05	ECO#05-039	REVISED BY	CHECK DATE	DATE
D2	2/21/06	ECO#06-009	R. Aguirre	2/21/06	7/12/99

KUSB-SMT-BS1N-x

Right Angle USB B-type Receptacle  
SMT Type, 4 Position



# Mouser Electronics

Authorized Distributor

Click to View Pricing, Inventory, Delivery & Lifecycle Information:

[Kycon:](#)

[KUSB-SMT-BS1NB30TR](#) [KUSB-SMT-BS1N-B](#) [KUSB-SMT-BS1N-W](#) [KUSB-SMT-BS1N-B30](#) [KUSB-SMT-BS1N-W30](#)