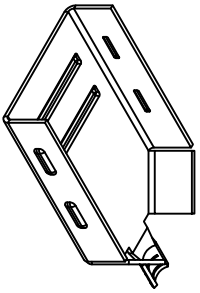
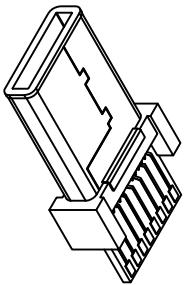


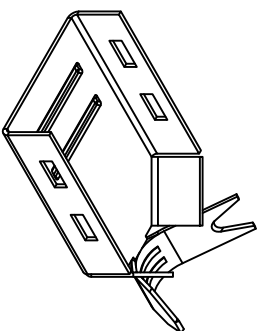
FRONT SHELL



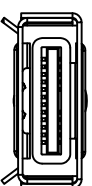
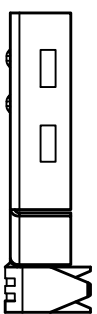
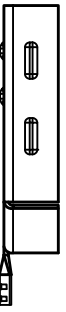
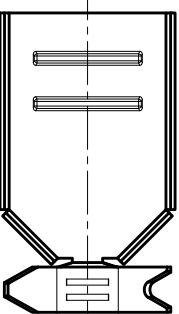
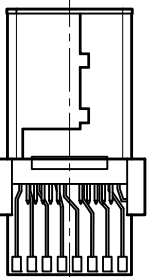
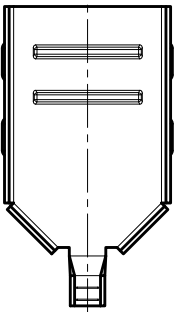
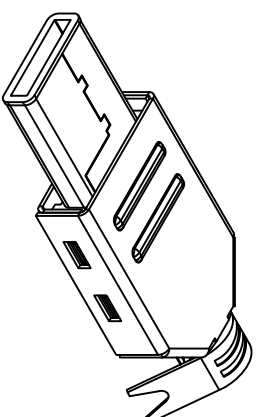
INSERTED BODY



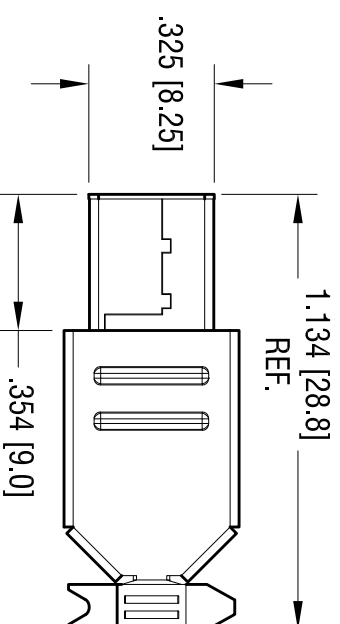
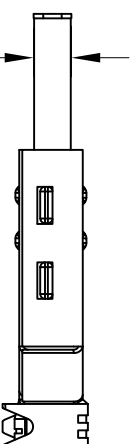
REAR SHELL



ASSEMBLED PLUG



.095 [2.41]



NOTE:

- 1. SHELL: METAL, NICKEL PLATED
- 2. CONTACT: MAT'L COPPER, GOLD PLATE
- 3. DIELECTRIC WITHSTANDING VOLTAGE: 1000 VAC FOR 1 MIN.
- 4. OPERATING TEMPERATURE -55°C TO +85°C

- 5. LOW LEVEL CONTACT RESISTANCE: INITIAL: 40mOHMS FOR ALL CONTACT MAX. AFTER: 10mOHMS MAX. CHANGE INSULATION RESISTANCE- 1000 MEGOHMS MIN. DIELECTRIC STRENGTH: 1000 Vac Rms 60HZ. 1Min.

DATE

DESCRIPTION

REV.

KEYSTONE ELECTRONICS CORP.

www.keystone.com • ASTORIA, N.Y. 11105-2017 • Tel (718) 956-8900

PART NAME

USB 3.1 TYPE C PLUG

MATERIAL

AS NOTED

FINISH

AS NOTED

TOLERANCES	INCH	[MM]	CODE	DWG NO.
DECIMAL	± .010	[± 0.25]	C	
ANGULAR	± 1°			
UNLESS OTHERWISE SPECIFIED				
DRN BY	NT	DATE	4.14.15	
APP'D	LN	SCALE	3X	
954				

THIS DOCUMENT IS THE PROPERTY OF KEYSTONE ELECTRONICS CORP. AND SHALL NOT BE REPRODUCED, DISTRIBUTED OR USED AS A BASIS FOR MANUFACTURE WITHOUT PRIOR WRITTEN PERMISSION FROM KEYSTONE ELECTRONICS CORP.

Mouser Electronics

Authorized Distributor

Click to View Pricing, Inventory, Delivery & Lifecycle Information:

[Keystone Electronics:](#)

[954](#)