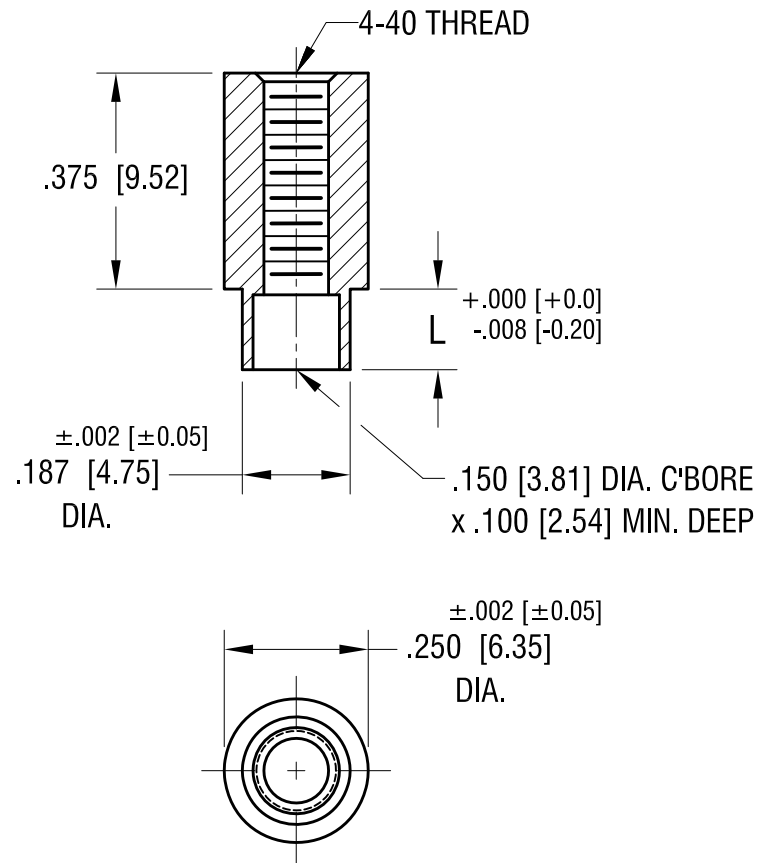


ACTUAL SIZE



P/N 1651-2



PART NO.	'L' DIM.
1651-2	.109 [2.77]
1651-3	.140 [3.56]

11.22.21	CHANGE AS PER ECN 12-162	A
DATE	DESCRIPTION	REV.

KEYSTONE ELECTRONICS CORP.			
www.keyelco.com • NEW HYDE PARK NY 11040 • Tel (516)328-7500			
PART NAME			
SWAGE THREADED STANDOFF			
MATERIAL			
BRASS			
FINISH	DUCTILE NICKEL PLATE	DRN BY	BOONE
		DATE	5.13.02
TOLERANCES	INCH [MM]	APP'D	LN
		SCALE	3X
DECIMAL	$\pm .005$ [ $\pm 0.13$ ]	DWG NO.	
ANGULAR	$\pm 1^\circ$	1651-	
UNLESS OTHERWISE SPECIFIED		C	

# Mouser Electronics

Authorized Distributor

Click to View Pricing, Inventory, Delivery & Lifecycle Information:

[Keystone Electronics:](#)

[1651-2](#)