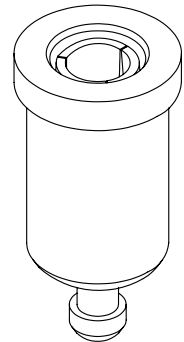
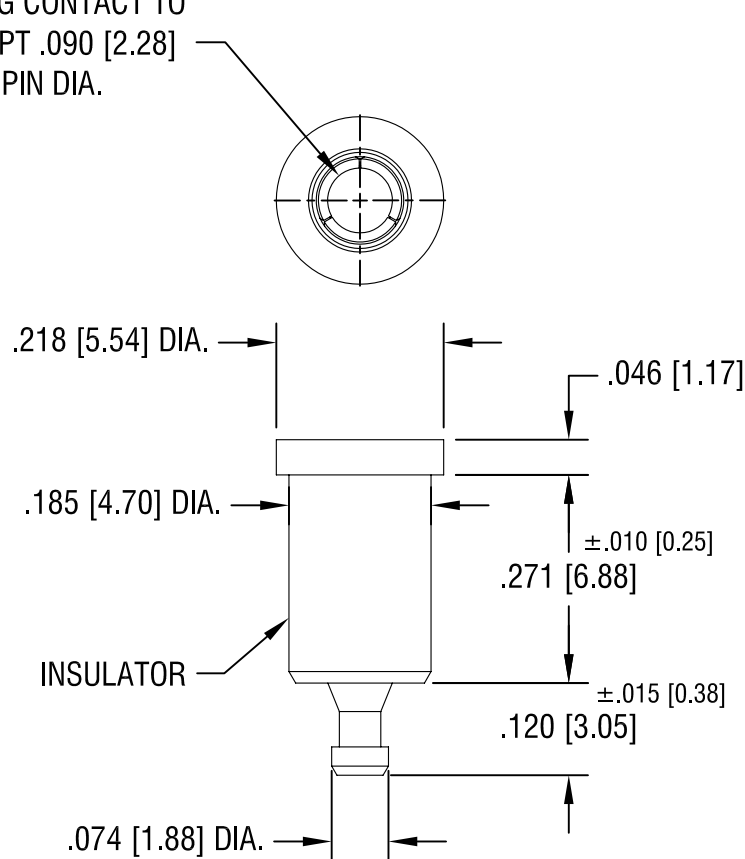


SPRING CONTACT TO
ACCEPT .090 [2.28]
PIN DIA.



NOTES:

1. TERMINAL JACK : MAT'L - BERYLLIUM COPPER (QQ-C-533)
2. BUSHING: MAT'L - PTFE

PART NO.	COLOR
11007	WHITE
11007-R	RED
11007-B	BLACK

11.17.08	CHANGE AS PER ECN 08-177	A
DATE	DESCRIPTION	REV.

KEYSTONE ELECTRONICS CORP.			
ASTORIA, N.Y. 11105-2017			
PART NAME			
PTFE INSULATED TEST JACK			
MATERIAL			
AS NOTED			
FINISH GOLD PLATE		DRN BY	DATE
		N.T.	7.10.07
		APP'D	SCALE
		LN	4X
TOLERANCES INCH [MM]		CODE	DWG NO.
DECIMAL ± .005 [± 0.15]		C/M	11007-
ANGULAR ± 1°			
UNLESS OTHERWISE SPECIFIED			

Mouser Electronics

Authorized Distributor

Click to View Pricing, Inventory, Delivery & Lifecycle Information:

[Keystone Electronics:](#)

[11007](#)