
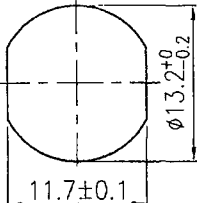
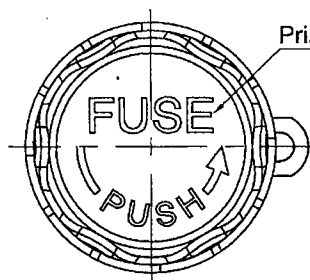


| | | |
|-----------------------|---|---|
| Rating | 10A 250V AC  | <div>Mounting Hole</div>  |
| Insulation Resistance | DC 500V 100M ohm Min | |
| Dielectric Strength | AC 1500V 1 minute | |
| Operation Temperature | -20°C~+85°C | |
| Fuse Size | Ø5*20 mm | |



Print no special orientation

Material:

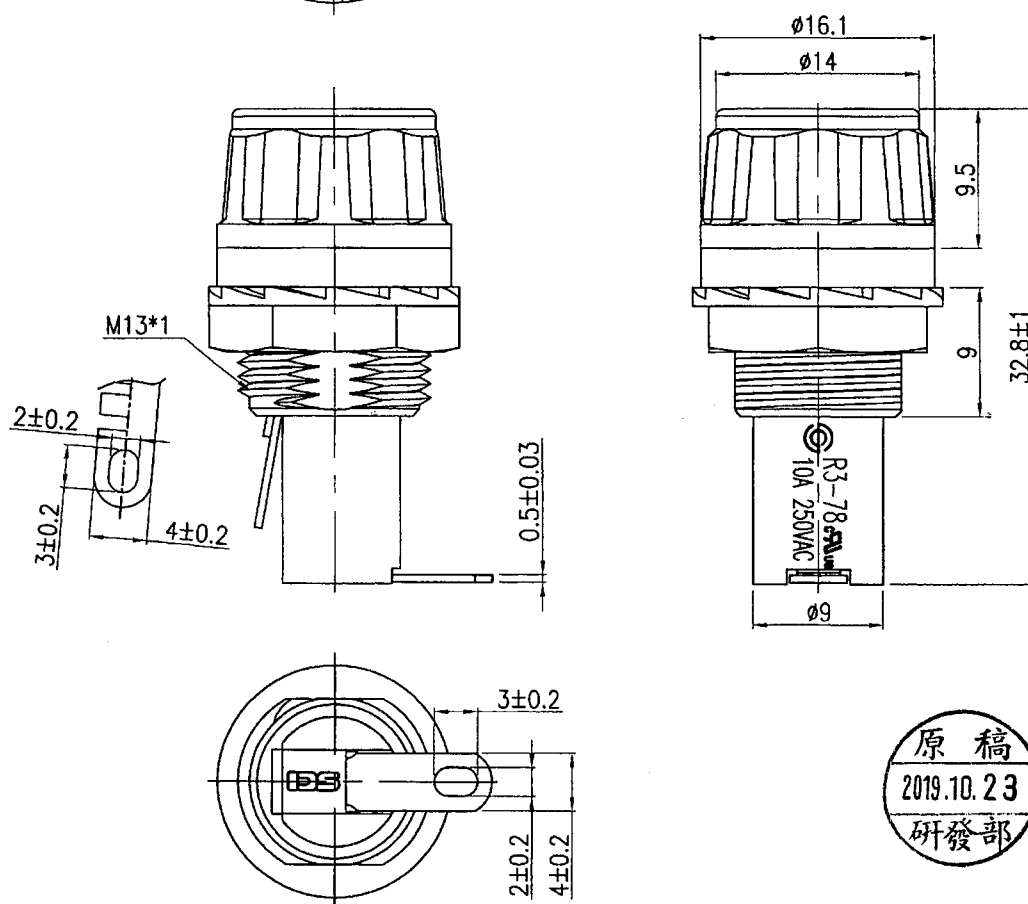
Housing: Black, PF

Knob: Black, PBT

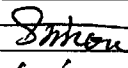
Knob cover: Green, ABS

Terminals: Tin Plated Brass

Printed: White, Hot stamping



Tolerances ± 0.3 Unless Otherwise Specified

| | | | | | | |
|----------|---------|---|--------------|------------------|--------------------------------|-------------|
| | | | | | | △ |
| | | | | | | △ |
| Date | Name | Description | | | | No. |
| Drawn | Checked | Approved | SCI BOM No. | 1310930 | Model Name | FUSE HOLDER |
| 柳新強 | |  | Customer No. | 112-R3-78A-2N4-G | Model No. | R3-78A-2N4 |
| 09/24/19 | | 10/8-19 | Unit | mm | Shin Chin Industrial Co., Ltd. | |
| | | | | | | Rev. 0 |

Mouser Electronics

Authorized Distributor

Click to View Pricing, Inventory, Delivery & Lifecycle Information:

[Shin Chin:](#)

[R3-78A-2N4-G](#)