

KIT_XMC14_2Go user guide

About this document

Scope and purpose

This document describes the features and hardware details of the KIT_XMC14_2GO equipped with the ARM® Cortex™-M0 based XMC1400 microcontroller from Infineon Technologies AG.

Intended audience

This document is intended for users who use the KIT_XMC14_2GO.

Table of contents

| | |
|--|----------|
| About this document | 1 |
| Table of contents | 1 |
| 1 Overview | 2 |
| 1.1 Key features..... | 2 |
| 1.2 Block diagram..... | 3 |
| 2 Hardware description | 4 |
| 2.1 Power supply..... | 5 |
| 2.2 Pin header connector..... | 5 |
| 2.3 User LEDs..... | 6 |
| 2.4 Reset..... | 6 |
| 2.5 Debugging and UART communication..... | 6 |
| 2.6 CAN Bus..... | 7 |
| 3 Production Data | 8 |
| 3.1 Schematics..... | 8 |
| 3.2 Components placement and geometry..... | 9 |
| 3.3 List of material..... | 9 |

1 Overview

The KIT_XMC14_2GO is designed to evaluate the capabilities of the XMC1400 microcontroller with the free of charge tool chain ModusToolbox™ and Arduino IDE.

This board is not cost optimized and does not serve as a reference design.

1.1 Key features

Table 1 summarizes the features of the KIT_XMC14_2GO.

Table 1 Features of the KIT_XMC14_2GO

| Topic | Features |
|------------------|---|
| Processor | XMC1400 Family Microcontroller XMC1404-Q040X0200 (ARM® Cortex™-M0 based) in a 5 x 5 mm VQFN-40 package |
| Flash | 200 KB |
| RAM | 16 KB |
| Clock generation | Internal oscillator |
| Frequencies | Core frequency 48 MHz and 96 MHz peripherals clock |
| Dimensions | 14 x 51.7 mm |
| Power supply | from USB 5V or up to 12V external power on Vin |
| Connectors | Two pin headers with 8 and 9 pins (pin pitch: 2.54 mm \triangleq 100 mil / between rows: 10.16 mm \triangleq 400 mil) Pin header fits to breadboard Additional 4 pins for CAN-H /CAN-L and 12V/GND connections |
| Debugger | Onboard J-Link debugger supports: Serial wire debug (SWD, ARM® standard) Single pin debug (SPD) UART-to-USB bridge (virtual COM) |
| Peripherals | Mapped to the connectors: 4 serial channels (USIC, configurable to SPI, UART, I2C, I2S) 12 channel 12-bit ADC, 2 x parallel sampling 8x 96MHz 16-bit timer External interrupts (via ERU) Others: Real time clock Random number generator One high speed CAN transceiver |
| Others | 2 User LEDs @ P0.6 and P0.7 |

1.2 Block diagram

The block diagram in Figure 1 shows the main components of the Kit KIT_XMC14_2GO including the power supply concept. There are the following main building blocks:

- XMC1400 microcontroller in a 5 x 5 mm VQFN-40 package
- Onboard USB debugger realized with a XMC4200 microcontroller for serial wire debug (SWD) and UART to USB Bridge
- Two pin header with 8 and 9 pins
- Can transceiver with CAN-L and CAN-H on a pin header
- Power supply with voltage regulator for 5V and 3.3V
- 2 user LEDs

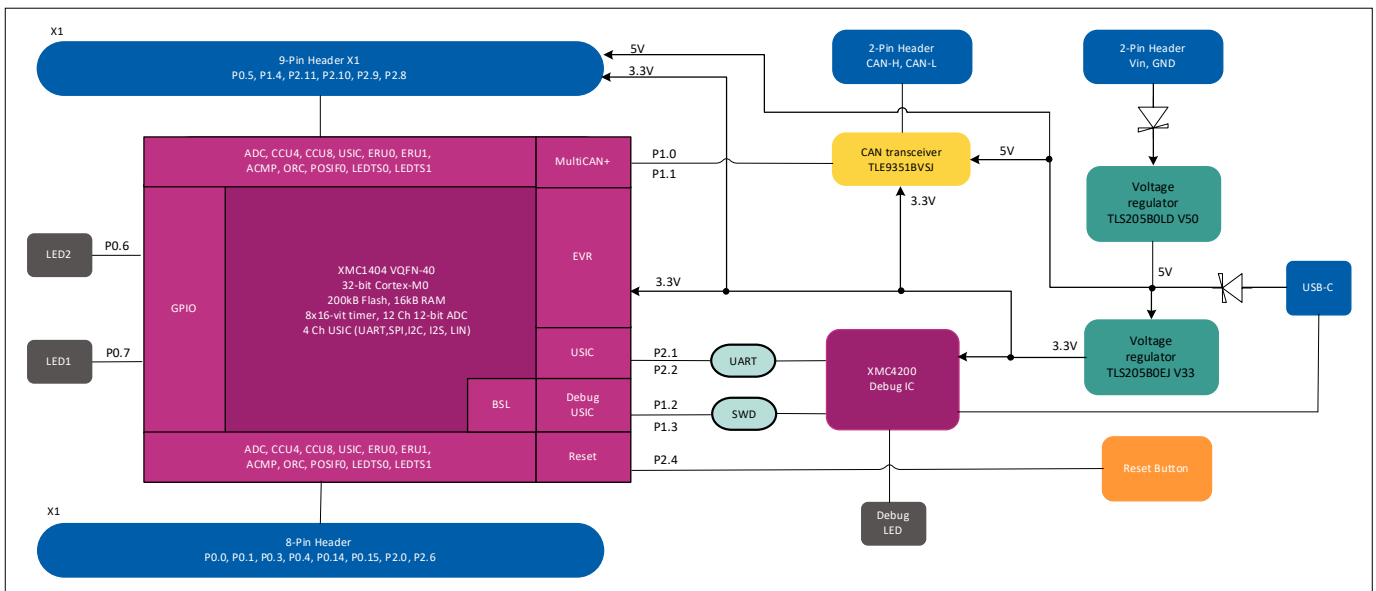


Figure 1 Block Diagram KIT_XMC14_2GO

2 Hardware description

The following sections give a detailed description of the board hardware and how it can be used. Figure 2 shows the components of the KIT_XMC14_2GO.

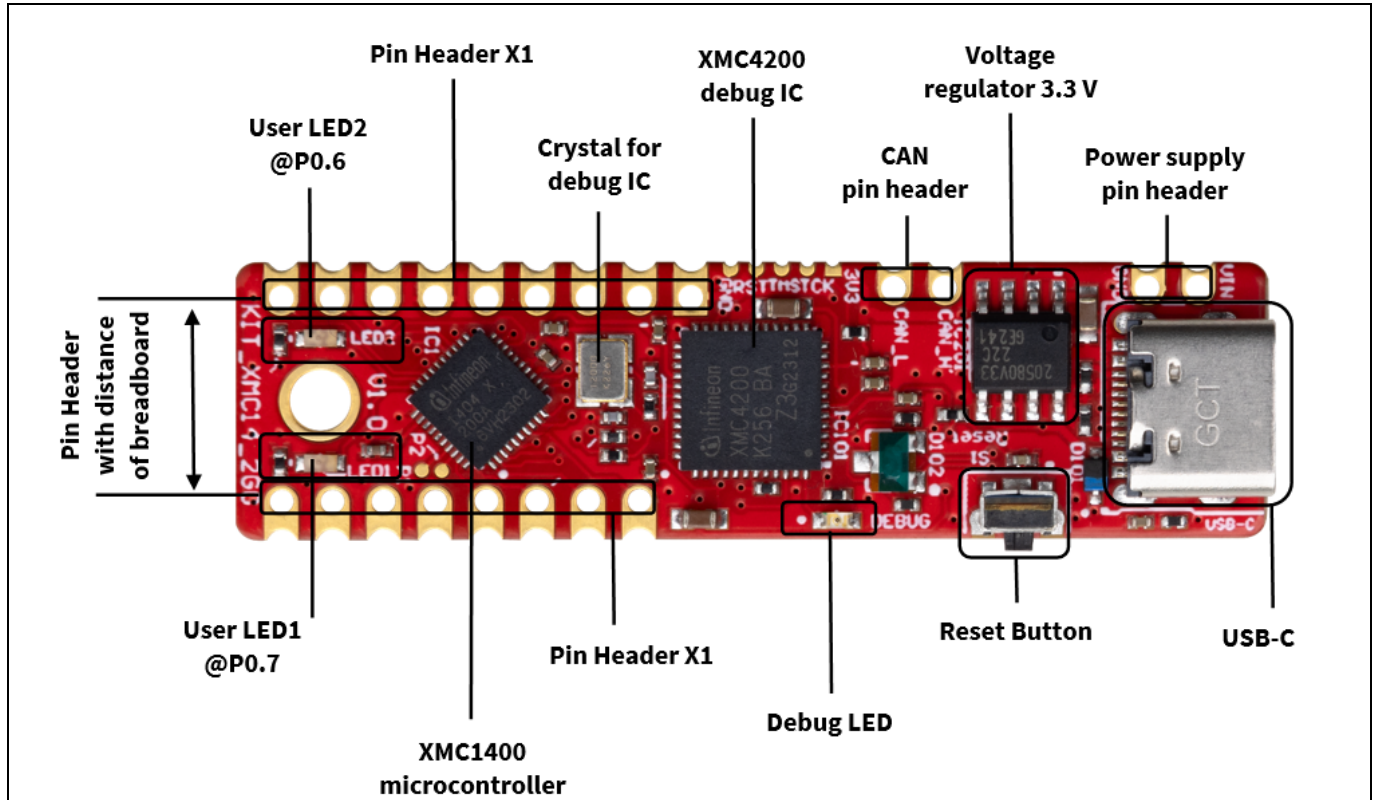


Figure 2 Top view of KIT_XMC14_2GO

The KIT_XMC14_2GO has also some components on the back of the platine which are shone in Figure 3.

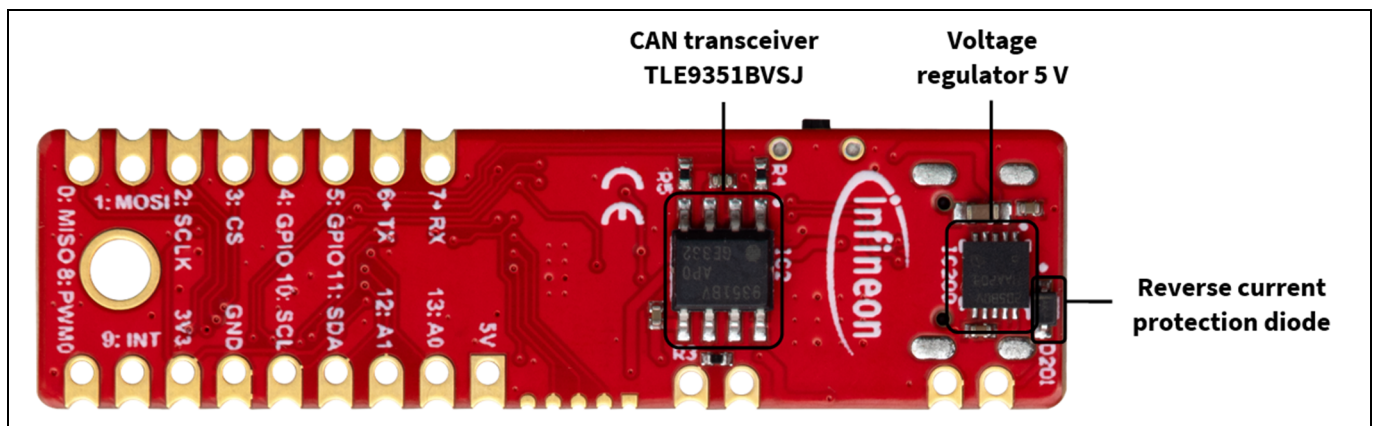


Figure 3 Back view of KIT_XMC14_2GO

KIT_XMC14_2GO user guide

Hardware description

2.1 Power supply

The KIT_XMC14_2GO can be powered by the USB-C connection with 5V. With the preprogrammed application and the onboard debugger in operation the KIT_XMC14_2GO typically draws about 85 mA. An onboard reverse current protection diode D101 will ensure safe operation and protects the USB port of the Laptop/PC in case power is provided through the pin header X1.

The board also has an additional option for external power supply via the Vin and GND pins. These are stabilized to 5V via an additional LDO TLS205B0LD V50 and the reverse polarity diode D201. A voltage supply of up to 20V is possible at this input.

The TLS205B0EJ V33 linear voltage regulator is responsible for generating the 3.3V power supply input for the XMC1400. The current capability of the VDD pin of the Kit is 500 mA. The same 3.3V power supply is provided for the XMC4200 debugging chip and th CAN transceiver.

2.2 Pin header connector

The pin header X1 can be used to extend the evaluation board or to perform measurements on the XMC1400. The pin labels are also printed onto the bottom side of the PCB.

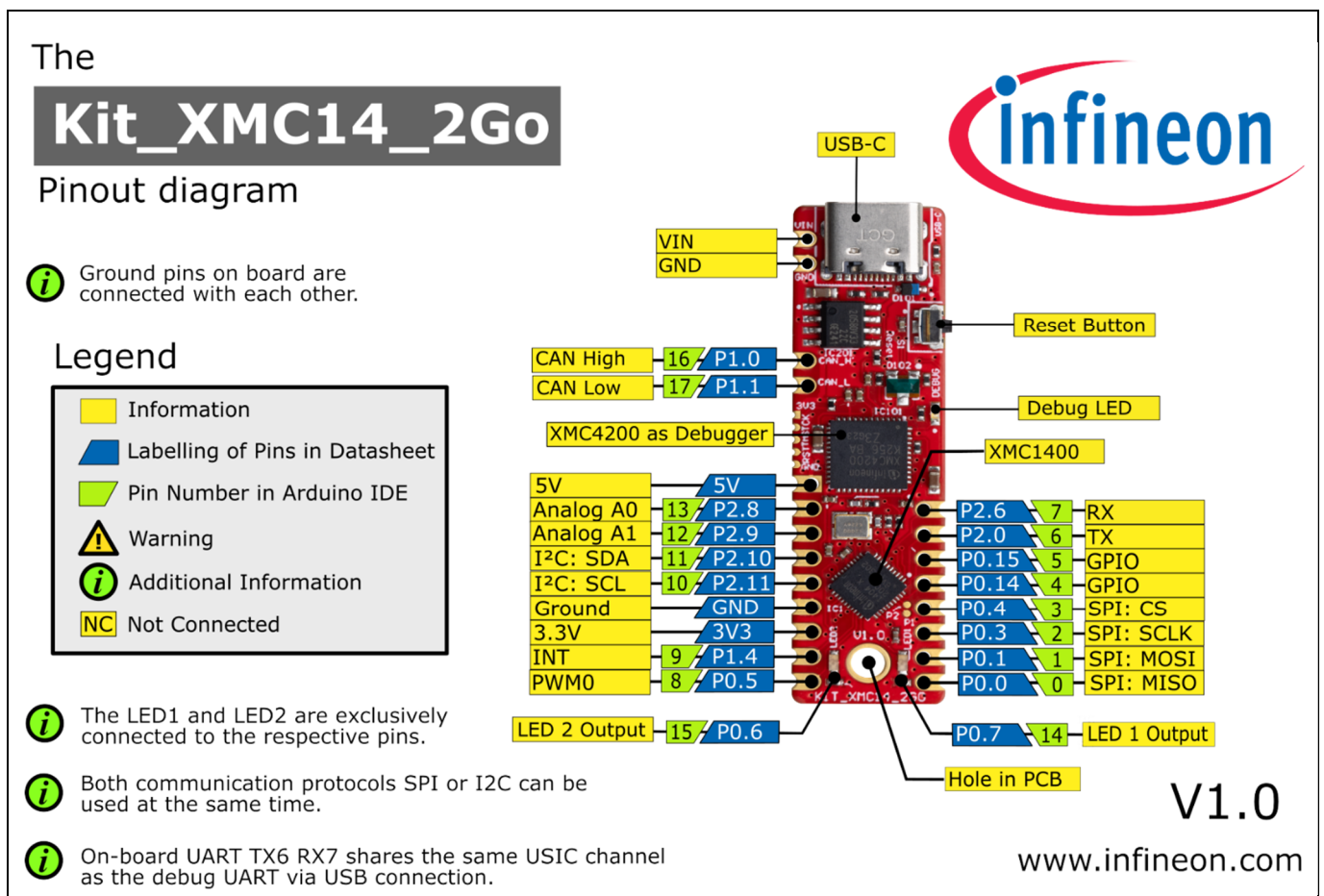


Figure 4 Pinout of the KIT_XMC14_2GO

KIT_XMC14_2GO user guide

Hardware description

In addition to the X1 pin header, the KIT_XMC14_2GO is equipped with four additional pins. These include Vin and GND, which can be supplied with an even higher external voltage. There is also a pin for CAN Low and CAN High, which are also shown in the pinout diagram in Figure 4.

2.3 User LEDs

The port pins P0.6 and P0.7 of the XMC1400 on the KIT_XMC14_2GO are connected to LEDs exclusively.

Table 2 List of material

| LED | Port pin |
|------|----------|
| LED1 | P0.7 |
| LED2 | P0.6 |

2.4 Reset

The KIT_XMC14_2GO is equipped with a reset button. The Button S1 sets pin P2.4 on the XMC1400 to GND and generates a software reset.

2.5 Debugging and UART communication

The onboard debugger supports 2-pin serial wire debug (SWD), single pin debug (SPD) and UART communication. Both require the installation of Segger's J-Link Driver. The latest Segger J-Link Driver can be downloaded at <https://www.segger.com/jlink-software.html>.

During installation of the J-Link driver, you will be asked for the installation of optional components. For support of the UART communication, take care to install the CDC USB driver (Composite device class). Therefore, select the option "Install USB Driver for J-Link-OB with CDC" as shown in Figure 5.

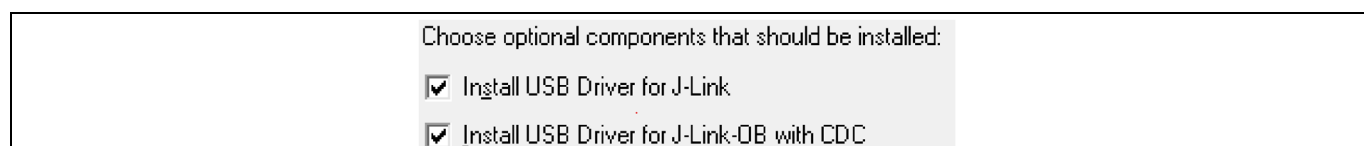


Figure 5 Recommended installation options for the J-Link driver

Table 3 shows the pin assignment of the XMC1400 used for debugging and UART communication.

Table 3 XMC1400 pins used for debugging and UART communication

| Pin function | Input / output | Port pin |
|-------------------------------------|----------------|----------|
| Data pin for debugging via SWD/SPD | I/O | P1.3 |
| Clock pin for debugging via SWD | O | P1.2 |
| Transmit pin for UART communication | O | P2.1 |
| Receive pin for UART communication | I | P2.2 |

2.6 CAN Bus

The KIT_XMC14_2GO is provided with a CAN bus system. It uses CAN node 0 on RXD pin P1.1 and TXD pin P1.0 of the XMC1400. The High-Speed CAN Transceiver is TLE9351VSJ from Infineon which is used in CAN system for automotive applications as well as for industrial applications. CAN-H and CAN-L are accessible through a pin header on the Board.

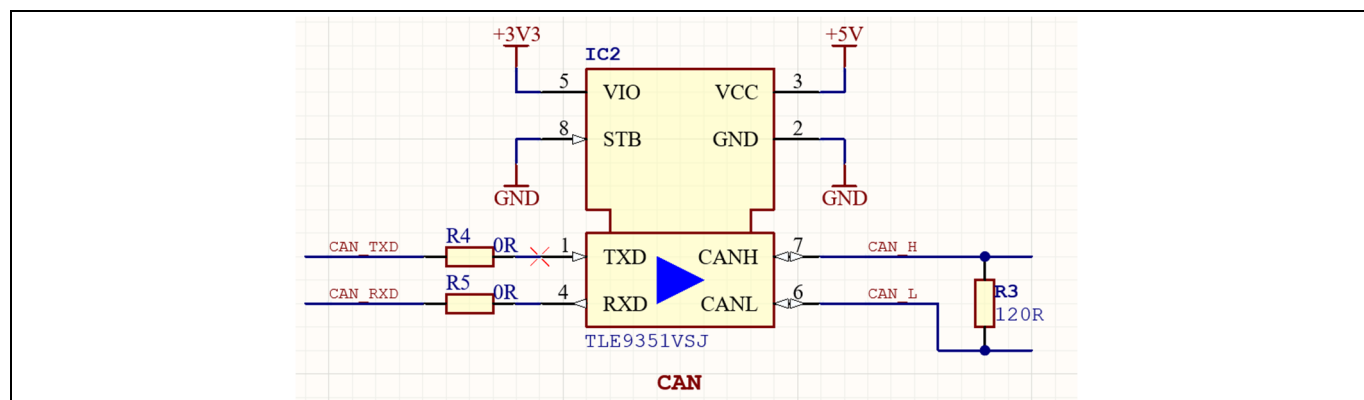


Figure 6 CAN transceiver circuitry

In a CAN bus network, the termination resistor R3 is required at either end of the bus to ensure proper signal transmission. The termination resistor helps to match the impedance of the transmission line, preventing signal reflections and ensuring reliable communication. However, when connecting more than two bus participants, such as in a multi-drop network, the termination resistor should be removed from the middle nodes. This is because having termination resistors at multiple points in the network can create signal reflections and degrade the communication quality. Therefore, for nodes in the middle of the bus, the termination resistor R3 should be desoldered to avoid signal integrity issues.

KIT_XMC14_2GO user guide

Production Data

3 Production Data

3.1 Schematics

The schematic of the KIT_XMC14_2GO can be found in Figure 7.

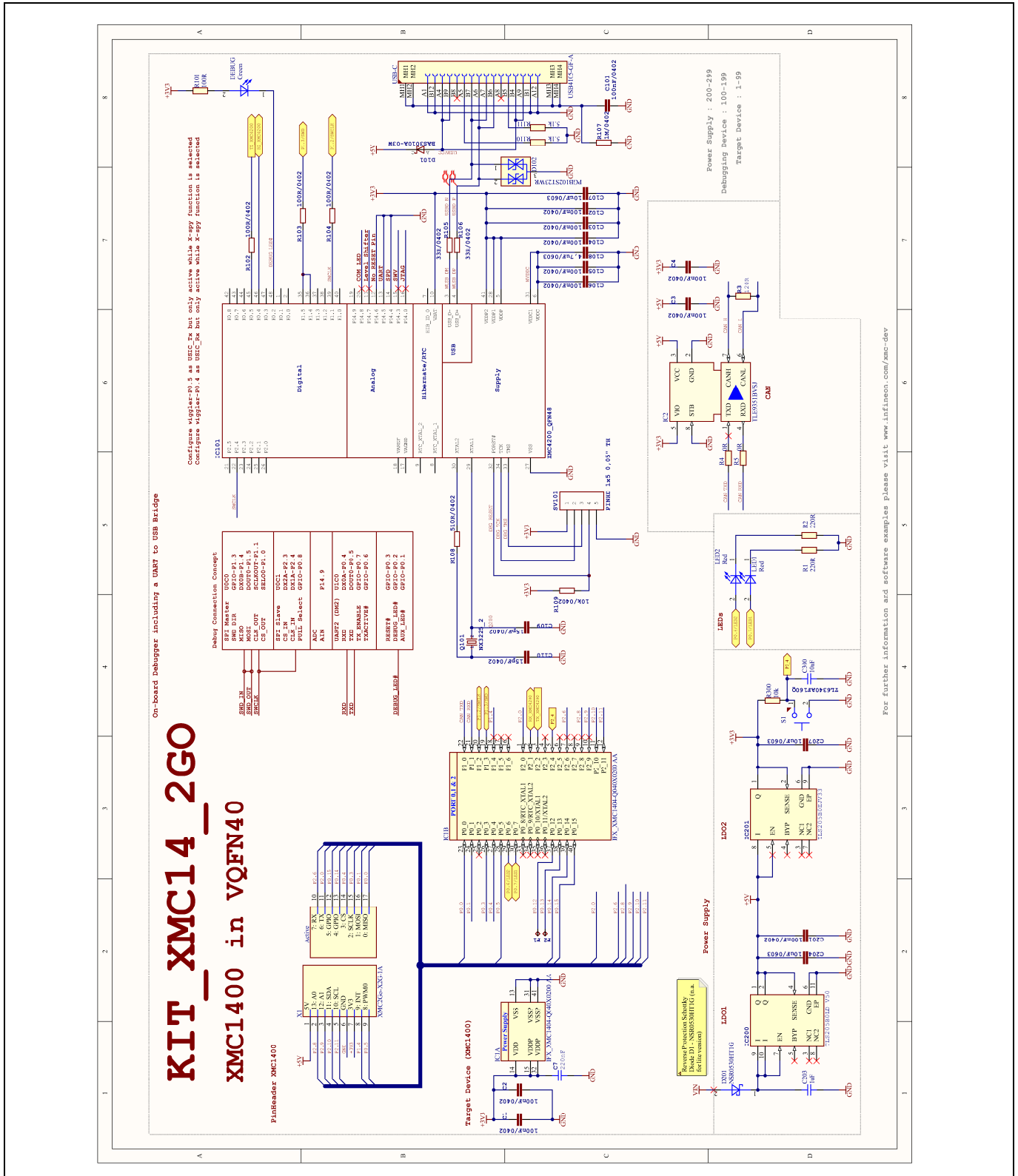


Figure 7 Schematic of the KIT_XMC14_2GO

3.2 Components placement and geometry

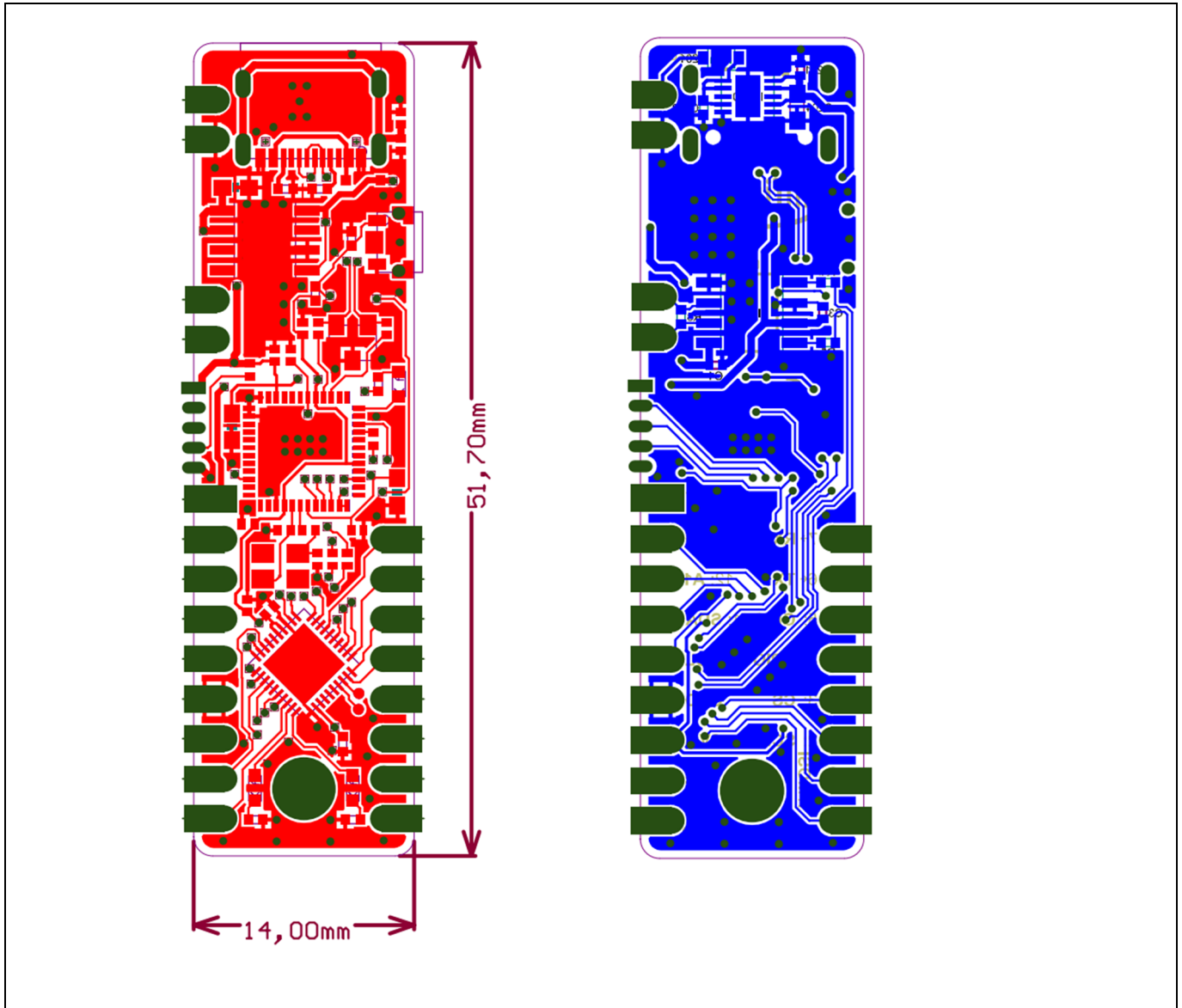


Figure 8 Layout and geometry

3.3 List of material

The list of material is valid for the KIT_XMC14_2GO version 1.

Table 4 List of material

| No. | Qty | Value | Device | Reference designator |
|-----|-----|----------------------------|-----------|--|
| 1 | 11 | 100nF 50V 0402 10% X5R CER | Capacitor | C1, C2, C3, C4, C101, C102, C103, C104, C105, C106, C201 |
| 2 | 1 | 220nF 16V 0402 10% X7R CER | Capacitor | C7 |
| 3 | 1 | 10nF 16V 0402 10% X7R CER | Capacitor | C300 |
| 4 | 3 | 10uF 35V 0603 X5R CER | Capacitor | C107, C204, C207 |
| 5 | 1 | 4.7uF 35V 0603 X5R CER | Capacitor | C108 |

KIT_XMC14_2GO user guide

Production Data

| | | | | |
|----|---|---|--|------------------------|
| 6 | 2 | 15pF 50V 0402 10% COG CER | Capacitor | C109, C110 |
| 7 | 1 | 1uF 16V 0402 10% X6S CER | Capacitor | C203 |
| 8 | 1 | BAS3010A-03W | Diode, Infineon | D101 |
| 9 | 1 | PGB102ST23WR | Diode | D102 |
| 10 | 1 | NSR0530HT1G | Diode | D201 |
| 11 | 1 | XMC1404-Q040X0200 | Microcontroller, XMC1404, Cortex M0, Infineon | IC1 |
| 12 | 1 | TLE9351BVSJ | CAN transceiver, Infineon | IC2 |
| 13 | 1 | XMC4200_QFN48 | Microcontroller, XMC4200, Cortex M4F, Infineon | IC101 |
| 14 | 1 | TLS205B0LD V50 | Linear Voltage Regulator, Vout = 5V, Infineon | IC200 |
| 15 | 1 | TLS205B0EJV33 | Linear Voltage Regulator, Vout = 3.3V, Infineon | IC201 |
| 16 | 2 | SMD WL-SMCD 0603 Red | LED red | LED1, LED2 |
| 17 | 1 | WL SMCW SMT Mono Color Chip LED | LED green | DEBUG |
| 18 | 1 | 12MHZ Crystals AEC-Q200 12000kHz 8pF 3.2x2.5mm | Crystal | Q101 |
| 19 | 2 | 220R 63mW 0402 1% | Resistor | R1, R2 |
| 20 | 1 | 120R 63mW 0402 1% | Resistor | R3 |
| 21 | 2 | 0R 63mW 0402 1% | Resistor | R4, R5 |
| 22 | 4 | 100R 63mW 0402 1% | Resistor | R101, R102, R103, R104 |
| 23 | 2 | 33R 100mW 0402 1% | Resistor | R105, R106 |
| 24 | 1 | 1M 100mW 0402 1% | Resistor | R107 |
| 25 | 1 | 510R 100mW 0402 1% | Resistor | R108 |
| 26 | 1 | 10k 63mW 0402 1% | Resistor | R109 |
| 27 | 2 | 5.1k 100mW 0402 5% | Resistor | R110, R111 |
| 28 | 1 | 10k 63mW 0402 1% | Resistor | R300 |
| 29 | 1 | TL6340AF160Q | Tactile Switch | S1 |
| 30 | 1 | PINHD 8x1 0,1" TH | Pin Header, 8-pin, 0.1" TH | X1 |
| 31 | 1 | PINHD 9x1 0,1" TH | Pin Header, 8-pin, 0.1" TH | X1 |
| 32 | 1 | USB4105-GF-A | USB2.0 TYP C | USB-C |

Revision history

| Document version | Date of release | Description of changes |
|------------------|-----------------|------------------------|
| | ** | Initial release |

Trademarks

All referenced product or service names and trademarks are the property of their respective owners.

Edition yyyy-mm-dd

Published by

Infineon Technologies AG

81726 Munich, Germany

© 2024 Infineon Technologies AG.

All Rights Reserved.

Do you have a question about this document?

Email: erratum@infineon.com

Document reference

AppNote Number

IMPORTANT NOTICE

The information contained in this application note is given as a hint for the implementation of the product only and shall in no event be regarded as a description or warranty of a certain functionality, condition or quality of the product. Before implementation of the product, the recipient of this application note must verify any function and other technical information given herein in the real application. Infineon Technologies hereby disclaims any and all warranties and liabilities of any kind (including without limitation warranties of non-infringement of intellectual property rights of any third party) with respect to any and all information given in this application note.

The data contained in this document is exclusively intended for technically trained staff. It is the responsibility of customer's technical departments to evaluate the suitability of the product for the intended application and the completeness of the product information given in this document with respect to such application.

For further information on the product, technology, delivery terms and conditions and prices please contact your nearest Infineon Technologies office (www.infineon.com).

WARNINGS

Due to technical requirements products may contain dangerous substances. For information on the types in question please contact your nearest Infineon Technologies office.

Except as otherwise explicitly approved by Infineon Technologies in a written document signed by authorized representatives of Infineon Technologies, Infineon Technologies' products may not be used in any applications where a failure of the product or any consequences of the use thereof can reasonably be expected to result in personal injury.

Mouser Electronics

Authorized Distributor

Click to View Pricing, Inventory, Delivery & Lifecycle Information:

[Infineon:](#)

[KITXMC142GOTOBO1](#)