

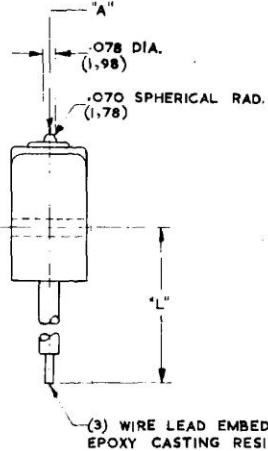
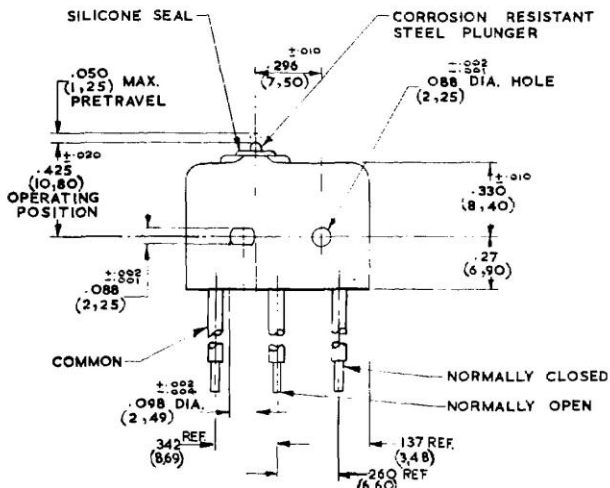
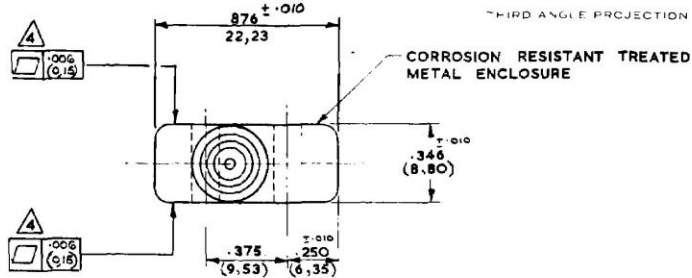
**Honeywell  
MICRO**

**SWITCH - BASIC**

CATALOGUE LISTING  
**9ISEI SERIES  
CHART I.**

NOTE	CATALOGUE LISTING	REL. No.	ISSUE	DIMENSION 'L' MINIMUM	WIRE LEADS	WEIGHT PER FOOT OF SINGLE CONDUCTOR
	9ISEI	MS-1455	9	12.00 (304.80)	P.T.F.E. TO EL 1930 TYPE 'B' No. 20 (19 X .0076)	.11 OZS (3.12 GMS)
	9ISEI-3	MS-1455	9	36.0 (914.40)	P.T.F.E. TO EL 1930 TYPE 'B' No. 20 (19 X .0076)	.11 OZS (3.12 GMS)
	9ISEI-6	MS-1455	9	72.0 (1828.80)	P.T.F.E. TO EL 1930 TYPE 'B' No. 20 (19 X .0076)	.11 OZS (3.12 GMS)
	9ISEI-4	MS-10055	5	48.0 (1219.20)	P.T.F.E. TO EL 1930 Type 'B' No. 20 (19 x .0076)	.11 oz. (3.12 GMS.)
	9ISEI-12	MS-2050	9	144.0 (3657.60)	P.T.F.E. TO EL 1930 TYPE 'B' No. 20 (19 X .0076)	.11 OZS (3.12 GMS.)
⚠	9ISEI-3N62	MS-10059	6	36.0 (914.40)	P.T.F.E. TO EL 1930 Type 'B' No. 20 (19 x .0076)	.11 oz. (3.12 gms.)

**M 9ISEI SERIES  
CHART I.**  
 HONEYWELL MS-1453



**NOTE:**

- 1 - MOUNTING HOLES WILL ACCEPT .087 MAX. (2.20) DIA. PINS OR SCREWS ON .375 ±.002 (9.53) CENTRES.
- 2 - ACTUATION IN LINE WITH ARROW "A" IS RECOMMENDED.
- 3 - WEIGHT OF SWITCH ONLY IS .26 OZ. (7.37) GRAMMES. WEIGHT PER FOOT OF SINGLE CONDUCTOR - SEE CHART.
- ⚠ FLAT WITHIN .006 (0,15)
- 5 - METRIC DIMENSIONS IN BRACKETS ARE IN MILLIMETERS.
- 6 - METRIC WEIGHTS IN BRACKETS ARE GRAMMES.

- REV. SIGNS
- 17 H.C.
  - 18 S.A.
  - 10 C.M.
  - 9 R.M.
  - 8 M.S.
  - 7 R.M.
  - 6 M.S.
  - 5 R.M.
  - 4 M.S.
  - 3 R.M.
  - 2 M.S.
  - 1 R.M.

CHARACTERIST.	BRITISH	METRIC	ELECTRICAL DATA	SCALE 2:1
OPERATING FORCE	5-17 OZS	141.75 - 487.95 GMS	CONTACT ARRANGEMENT <b>S.P.D.T.</b>	DO NOT SCALE DRAWING
RELEASE FORCE	4 OZ. MIN.	113.40 GMS	BREAK DISTANCE <b>.010 MIN. (.25)</b>	UNLESS OTHERWISE SPECIFIED
RELEASE TRAVEL	.004 MIN.	.10	250 VAC..... 3 AMP	DIMENSIONS ARE IN INCHES
DIFFERENTIAL TRAVEL	.004 MAX.	.10	30 VOLTS D.C. RATING	TOLERANCES ARE
OVERTRAVEL	.003 MIN.	.07	INDUCTIVE.....SEA LEVEL..... 3 AMP	ONE PLACE .100
			70,000 FT..... 2.5 AMP	TWO PLACE .001
			RESISTIVE.....SEA LEVEL..... 5 AMP	THREE PLACE .0001
			70,000 FT..... 5 AMP	ANGLES
			MAXIMUM INRUSH..... 24 AMP	WEIGHT SEE NOTE 3.

HONEYWELL LIMITED, Bracknell, Berks., & Newhouse, Lanarkshire.

# Mouser Electronics

Authorized Distributor

Click to View Pricing, Inventory, Delivery & Lifecycle Information:

[Honeywell:](#)

[91SE1](#)