

# MICRO SWITCH

FREERPORT ILLINOIS, U.S.A  
A DIVISION OF HONEYWELL INC.  
FED. MFG. CODE 91929

# SWITCH - BASIC

CATALOG LISTING

V3-3057

CK-X3557

REPLACES X83370-V3

RELEASE NO. PR-14328

DRAWING NUMBER

ISSUE

CHECK

REVISIONS

CHECK

CHECK

CHECK

CHECK

CHECK

CHECK

CHECK

CHECK

CHECK

V3-3057

M

DRAWING NUMBER

ISSUE

CHECK

REVISIONS

CHECK

CHECK

CHECK

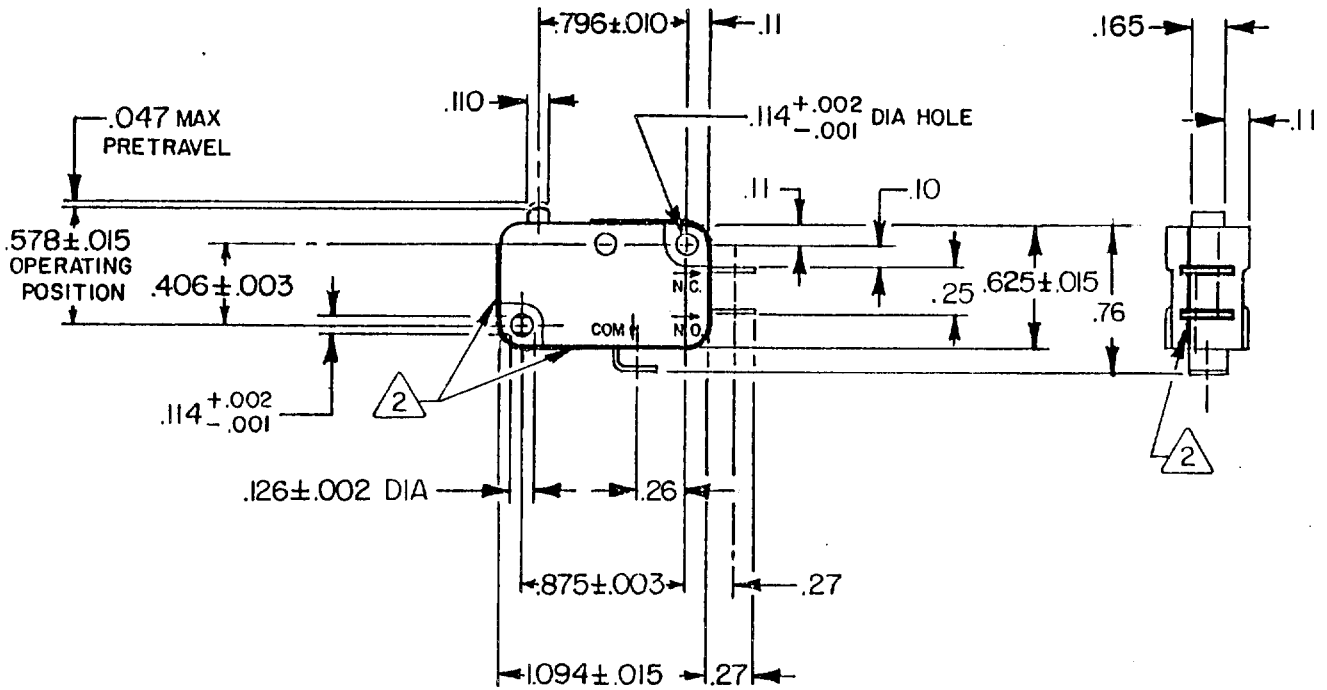
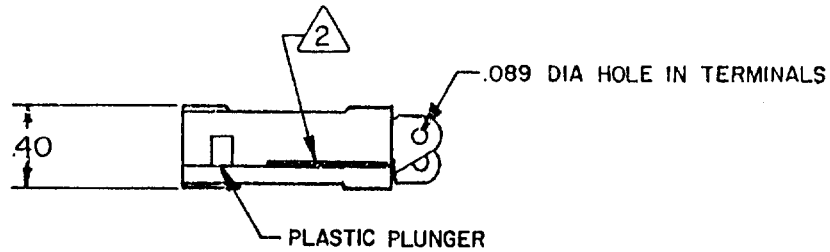
CHECK

CHECK

CHECK

CHECK

CHECK

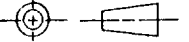


NOTES

- 1 - TERMINALS ARE PLATED FOR SOLDERING
- 2 - EPOXY APPLIED AROUND TERMINAL AREA AND JOINT BETWEEN CASE AND COVER. EPOXY ON TOP OF THE SWITCH TO BE WIPED OFF FLUSH WITH CASE & COVER

THIS DRAWING COVERS A PROPRIETARY ITEM AND IS THE PROPERTY OF MICRO SWITCH, A DIVISION OF HONEYWELL. THIS DRAWING IS NOT TO BE COPIED OR USED WITHOUT THE APPROVAL OF MICRO SWITCH.

THIRD ANGLE PROJECTION



CHARACTERISTICS

OPERATING FORCE --- 150 GRAM MAX

RELEASE FORCE --- 15 GRAM MIN

DIFFERENTIAL TRAVEL --- .002-.010

OVERTRAVEL --- .050 MIN

FREE POSITION --- .625 MAX

RELEASE TRAVEL --- .010 MIN

ELECTRICAL DATA

CONTACT ARRANGEMENT  
S P D T

L112

10A 1/3 HP 125 OR 250 VAC  
1/2A 125 VDC, 1/4A 250 VDC  
4A 125 VAC "L"

SCALE FULL

DO NOT SCALE PRINT

UNLESS OTHERWISE SPECIFIED TOLERANCES ARE

ONE PLACE (.0) ± .030

TWO PLACE (.00) ± .015

THREE PLACE (.000) ± .005

ANGLES ±

RAW MATERIAL - COMMERCIAL STANDARD

DIMENSIONS ARE IN INCHES AND ARE TO BE MET BEFORE PROTECTIVE COATINGS ARE APPLIED

MICRO SWITCH STANDARDS APPLY

WEIGHT .016 LB



FC-52848-B

DRAWN

NOV 85

NOV 85

NOV 85

NOV 85

NOV 85

NOV 85

NOV 85

NOV 85

NOV 85

NOV 85

NOV 85

NOV 85

NOV 85

NOV 85

NOV 85

NOV 85

NOV 85

NOV 85

NOV 85

NOV 85

NOV 85

NOV 85

NOV 85

NOV 85

NOV 85

# Mouser Electronics

Authorized Distributor

Click to View Pricing, Inventory, Delivery & Lifecycle Information:

[Honeywell:](#)

[V3-3057](#)