

MICRO SWITCH

A DIVISION OF MINNEAPOLIS-HONEYWELL REGULATOR COMPANY
 FREEPORT, ILLINOIS

FED. MFR. CODE 91929

SWITCH-BASIC

CATALOG LISTING
1SE1-2

(M) 1SE1-2
 ISSUE 4

1SE1-2
 PAGE 1 OF 1

M

DRAWING
 NUMBER

10

10

ISSUE

X

REPLACES

RELEASE NO.

CHECK

REVISIONS

A	CO16449
D A W 28 DEC 61	
B	CO-34213
J A L 24 SEPT 74	
C	CO 51463F
S L B 9 NOV 82	
D	CO57041A
C J H 2 MAR 85	
E	CO 174176
T S M 15 JAN 93	
F	CO94274
D L M MAR 99	

CHECK

27 FEB 82

D A W

CHECK

28 DEC 61

CHECK

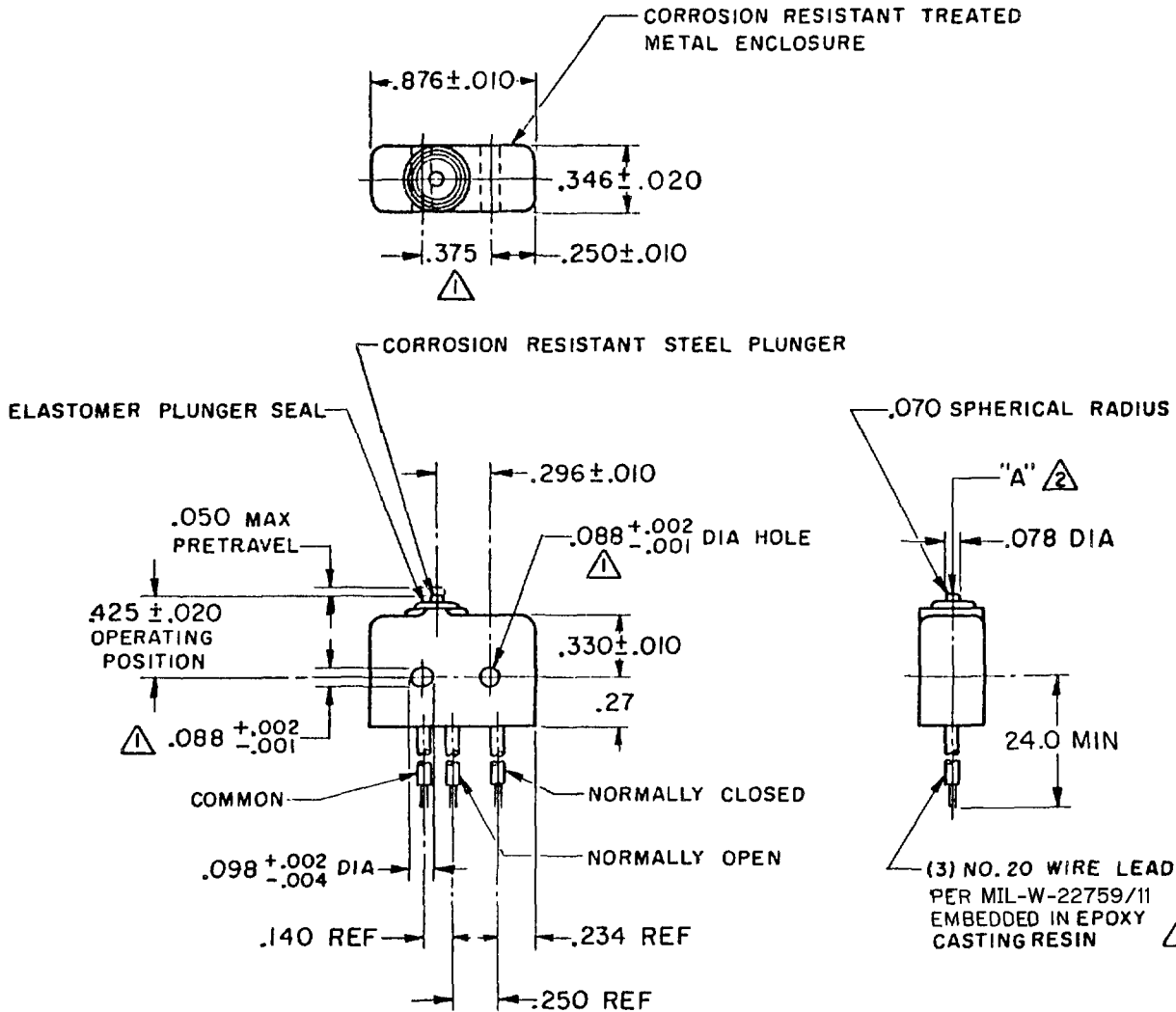
28 DEC 61

CHECK

28 DEC 61

CHECK

28 DEC 61



NOTE -

- ① - MOUNTING HOLES WILL ACCEPT .087 MAX DIA PINS OR SCREWS ON $.375 \pm .002$ CENTERS
- ② - ACTUATION IN LINE WITH ARROW "A" IS RECOMMENDED
- ③ - WEIGHT OF SWITCH ONLY IS .26 OZ MAX. WEIGHT OF SWITCH WITH WIRE LEADS IS 1.02 OZ MAX
- ④ - WIRE LEADS MARKED WITH CIRCUIT IDENTIFICATION AND WIRE GAGE (COMMON - C-20, NORMALLY OPEN - NO-20, ETC.) PER MIL-W-5088

THIS DRAWING COVERS A PROPRIETARY ITEM AND IS THE PROPERTY OF MICRO SWITCH, A DIVISION OF MINNEAPOLIS-HONEYWELL REGULATOR CO. THIS DRAWING IS NOT TO BE COPIED OR USED WITHOUT THE APPROVAL OF MICRO SWITCH.

CHARACTERISTICS	ELECTRICAL DATA	SCALE FULL
OPERATING FORCE ----- 5-17 OZ	CONTACT ARRANGEMENT S P D T	DO NOT SCALE PRINT
RELEASE FORCE ----- 4 OZ MIN	250 VAC ----- 5 AMP	UNLESS OTHERWISE SPECIFIED DIMENSIONS ARE IN INCHES TOLERANCES ARE:
RELEASE TRAVEL ----- .004 MIN	30 VOLTS DC RATING	
DIFFERENTIAL TRAVEL ----- .004 MAX	INDUCTIVE ----- SEA LEVEL ----- 3 AMP	ONE PLACE (.0) ±.030
OVERTRAVEL ----- .003 MIN	50,000 FT ----- 2.5 AMP	TWO PLACE (.00) ±.015
	RESISTIVE ----- SEA LEVEL ----- 5 AMP	THREE PLACE (.000) ±.008
	50,000 FT ----- 5 AMP	ANGLES ±
	MAXIMUM INRUSH ----- 24 AMP	WEIGHT ③

FORMTEK

FO-50378

DRAWN

D A W

Mouser Electronics

Authorized Distributor

Click to View Pricing, Inventory, Delivery & Lifecycle Information:

[Honeywell:](#)

[1SE1-2](#)