

**MICRO SWITCH**  
 a Honeywell Division

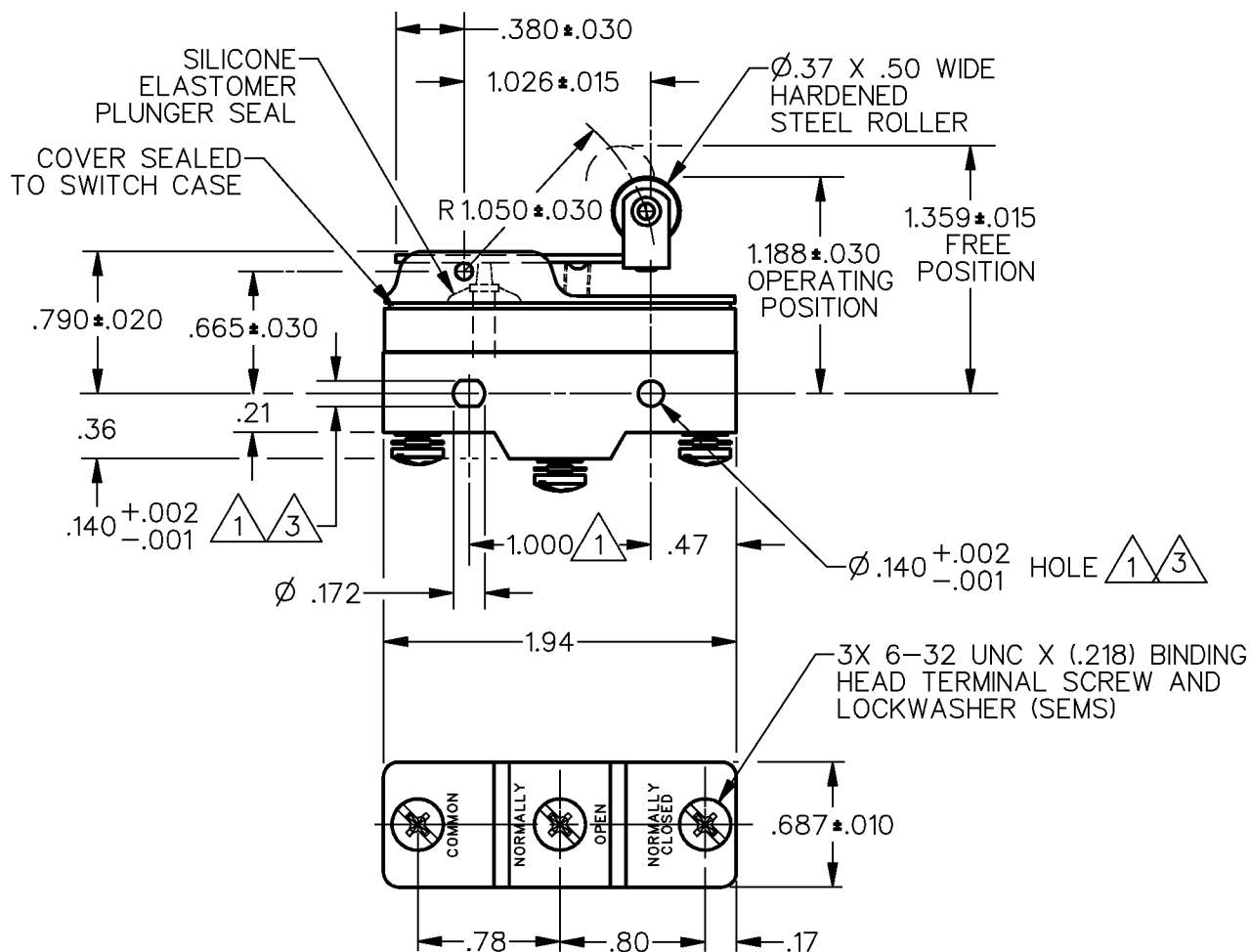
FED.MFG.CODE 91929

# SWITCH - BASIC

CATALOG LISTING

**BZ-7RW822155516T-S**

WHEN SEARCHING FOR THIS CATALOG LISTING WITHIN HONEYWELL'S INTERNAL SAP SYSTEM, THE LISTING MUST BE ENTERED WITHOUT DASHES (BZ7RW822155516TS) DUE TO CHARACTER LIMITATIONS IMPOSED BY THE SYSTEM.



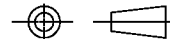
## NOTES

- 1 MOUNTING HOLES WILL ACCEPT PINS OR SCREWS OF MAX Ø.139 ON 1.000 ± .002 CENTERS
- 2 - SEALED CONSTRUCTION PROVIDES SPLASH RESISTANCE
- 3 SLIGHT COUNTERBORE PERMISSIBLE (EITHER SIDE)

ANSI Y14.5M-1982 APPLIES

THIS DRAWING COVERS A PROPRIETARY ITEM AND IS THE PROPERTY OF MICRO SWITCH, A DIVISION OF HONEYWELL. THIS DRAWING IS NOT TO BE COPIED OR USED WITHOUT THE APPROVAL OF MICRO SWITCH.

THIRD ANGLE PROJECTION



CHARACTERISTICS	ELECTRICAL DATA	SCALE	NONE	DO NOT SCALE PRINT
OPERATING FORCE -----7 OZ MAX	CONTACT ARRANGEMENT S P D T	UNLESS OTHERWISE SPECIFIED TOLERANCES ARE		
RELEASE FORCE -----1 1/2 OZ MIN	L9 10A 125, 250 OR 480 VAC 1/2A 125 VDC, 1/4A 250 VDC L288	ONE PLACE	(.0)	±.030
DIFFERENTIAL TRAVEL -----.020-.050		TWO PLACE	(.00)	±.015
OVERTRAVEL -----.094 MIN		THREE PLACE	(.000)	±.005
		ANGLES		±
		WEIGHT	.079 LB.	



# Mouser Electronics

Authorized Distributor

Click to View Pricing, Inventory, Delivery & Lifecycle Information:

[Honeywell:](#)

[BZ-7RW822155516T-S](#)