

MICRO SWITCH
a Honeywell Division

FED.MFG.CODE 91929

SWITCH - BASIC

X111450-BE

REPLACES

PR-24144

RELEASE NO	
------------	--

1

CHECK

50

02FEE

AK

CHECK	
-------	--

12 JUL 99

JAF

69 CHECK

DLT	12 JU
-----	-------

BE-1RV320-A4

2
NSSI

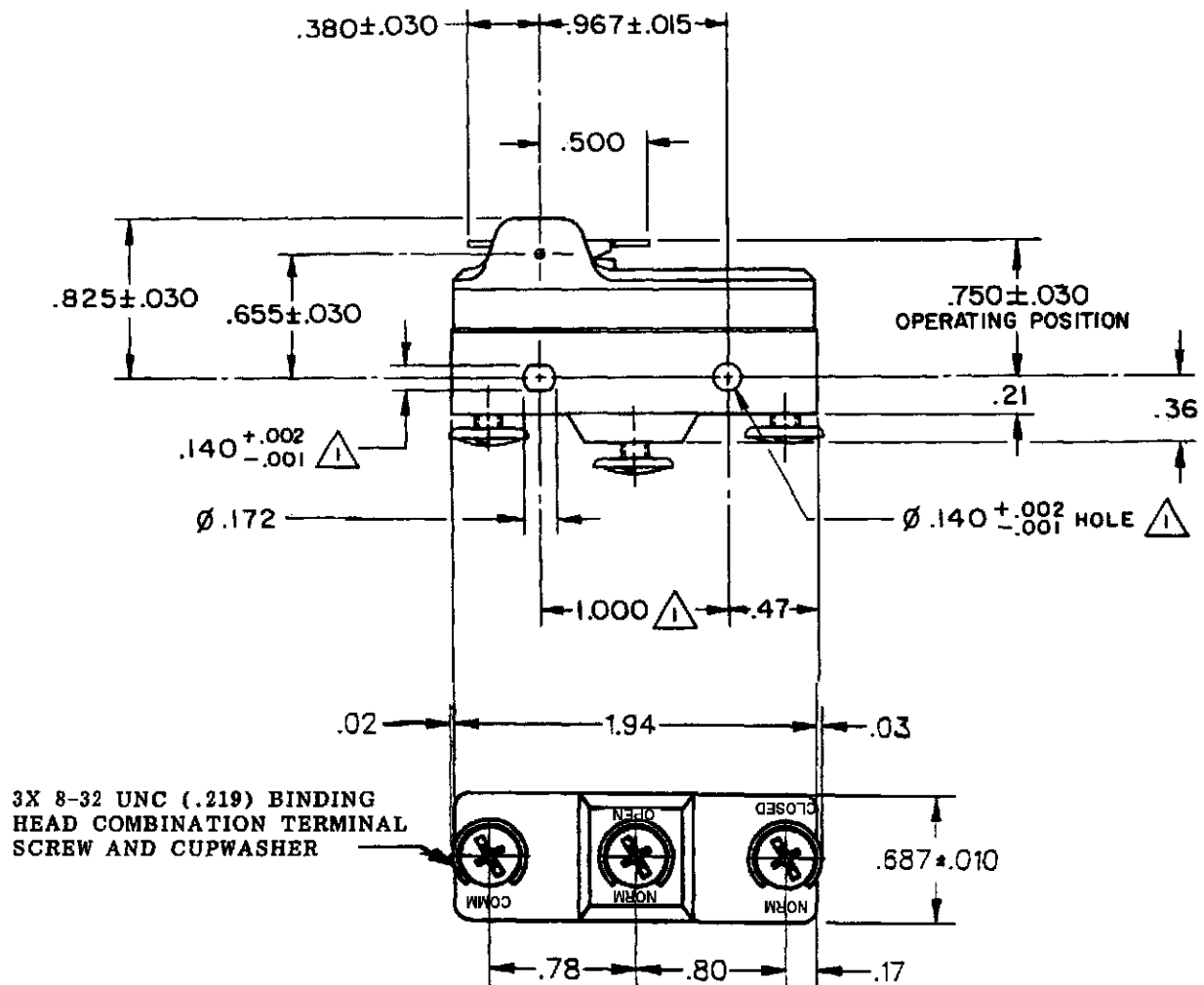
REVISIONS:
A 001094

KR
02FEB05

--	--

--	--

RASTER



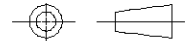
NOTES



- ⚠ MOUNTING HOLES WILL ACCEPT PINS OR SCREWS
OF $\phi .139$ MAX ON 1.000 CENTERS
2 - SWITCH WILL WITHSTAND TEMPERATURE OF 250°

ANSI Y14.5M-1982 APPLIES

THIS DRAWING COVERS A PROPRIETARY ITEM AND IS THE PROPERTY OF MICRO SWITCH, A DIVISION OF HONEYWELL. THIS DRAWING IS NOT TO BE COPIED OR USED WITHOUT THE APPROVAL OF MICRO SWITCH.

THIRD ANGLE PROJECTION



CHARACTERISTICS	ELECTRICAL DATA	SCALE FULL	DO NOT SCALE PRINT
OPERATING FORCE- - - - -10 OZ MAX	CONTACT ARRANGEMENT	UNLESS OTHERWISE SPECIFIED TOLERANCES ARE	
RELEASE FORCE- - - - -3.5 OZ MIN	S P D T		
DIFFERENTIAL TRAVEL- - - -.020 MAX	25-A-125, 250, 480 VAC 1 HP-125 VAC; 2HP 250 VAC OR 480 VAC; PILOT DUTY 750 VA-480 VAC, MAX; 60/75°C (Cu)	ONE PLACE (.0)	± .030
OVERTRAVEL- - - - - .030 MIN		TWO PLACE (.00)	± .015
		THREE PLACE (.000)	± .005
	 	ANGLES	±
		WEIGHT	

Mouser Electronics

Authorized Distributor

Click to View Pricing, Inventory, Delivery & Lifecycle Information:

[Honeywell:](#)

[BE-1RV320-A4](#)