

REPLACES X112980-A2

CATALOG LISTING  
**BA-2RV336-A2**  
PAGE 1 OF 1  
RELEASE NO. 205794

ISSUE **M**  
3

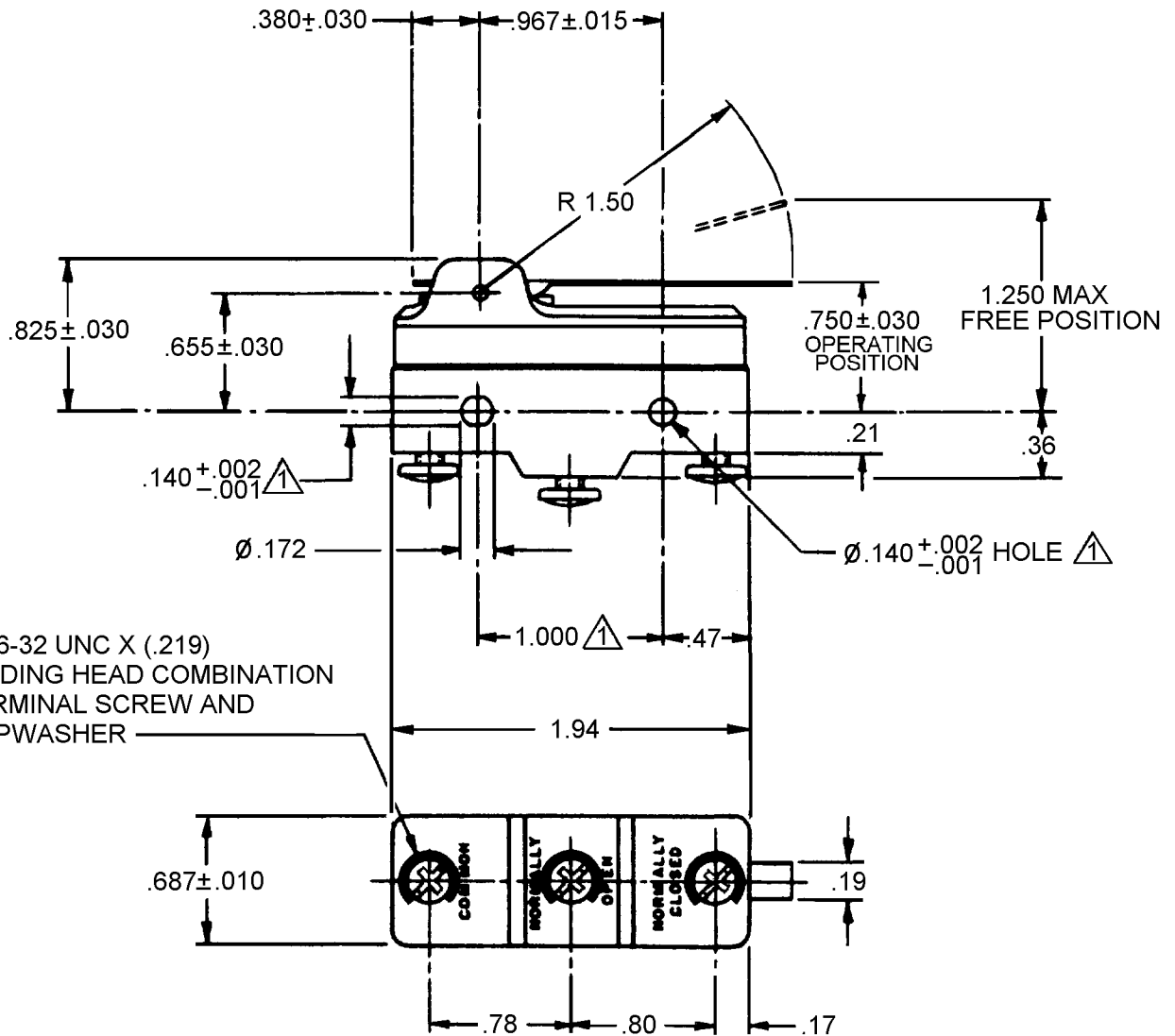
REVISIONS

A	205889	CSL	25 JUN 02
B	0018387	TSG	18 JAN 06

CHECK  
18 JAN 06  
RJ  
12 JUN 02

SA V  
12 JUN 02

DL T  
12 JUN 02  
RASTER  
DRAWN



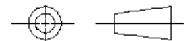
3X 6-32 UNC X (.219)  
BINDING HEAD COMBINATION  
TERMINAL SCREW AND  
CUPWASHER

NOTES  
 ▲ MOUNTING HOLES WILL ACCEPT PINS OR SCREWS  
 OF Ø.139 ON 1.000±.002 CENTERS

ANSI Y14.5M-1982 APPLIES

THIS DRAWING COVERS A PROPRIETARY ITEM AND IS THE PROPERTY OF MICRO SWITCH, A DIVISION OF HONEYWELL. THIS DRAWING IS NOT TO BE COPIED OR USED WITHOUT THE APPROVAL OF MICRO SWITCH.

THIRD ANGLE PROJECTION



CHARACTERISTICS	ELECTRICAL DATA
OPERATING FORCE ----- 1.5-2.5 OZ	CONTACT ARRANGEMENT SPDT
RELEASE FORCE ----- 1 OZ MIN	L23 20A 125, 250 OR 480 VAC 10A 125 VAC "L"
PRETRAVEL ----- .470 MAX	1HP 125 VAC, 2HP 250 VAC 1/2A 125 VDC, 1/4A 250 VDC
DIFFERENTIAL TRAVEL ----- .045 MAX	L288 L308 L315
OVERTRAVEL ----- .100 MIN	20(3)A 250V ∼ T85 5E4

SCALE	FULL	DO NOT SCALE PRINT
UNLESS OTHERWISE SPECIFIED TOLERANCES ARE		
ONE PLACE	(.0)	±.030
TWO PLACE	(.00)	±.015
THREE PLACE	(.000)	±.005
ANGLES		±
WEIGHT		

# Mouser Electronics

Authorized Distributor

Click to View Pricing, Inventory, Delivery & Lifecycle Information:

[Honeywell:](#)

[BA-2RV336-A2](#)