

FREEPORT ILLINOIS, U.S.A
A DIVISION OF HONEYWELL
FED. MFG. CODE 91929

SWITCH-BASIC

CATALOG LISTING

BZ-RX20

BZ-RX20

N

DRAWING
NUMBER

ISSUE 1

REPLACES

RELEASE NO. PR 6564

CHECK

CHECK

DEB

CHECK

11 3N

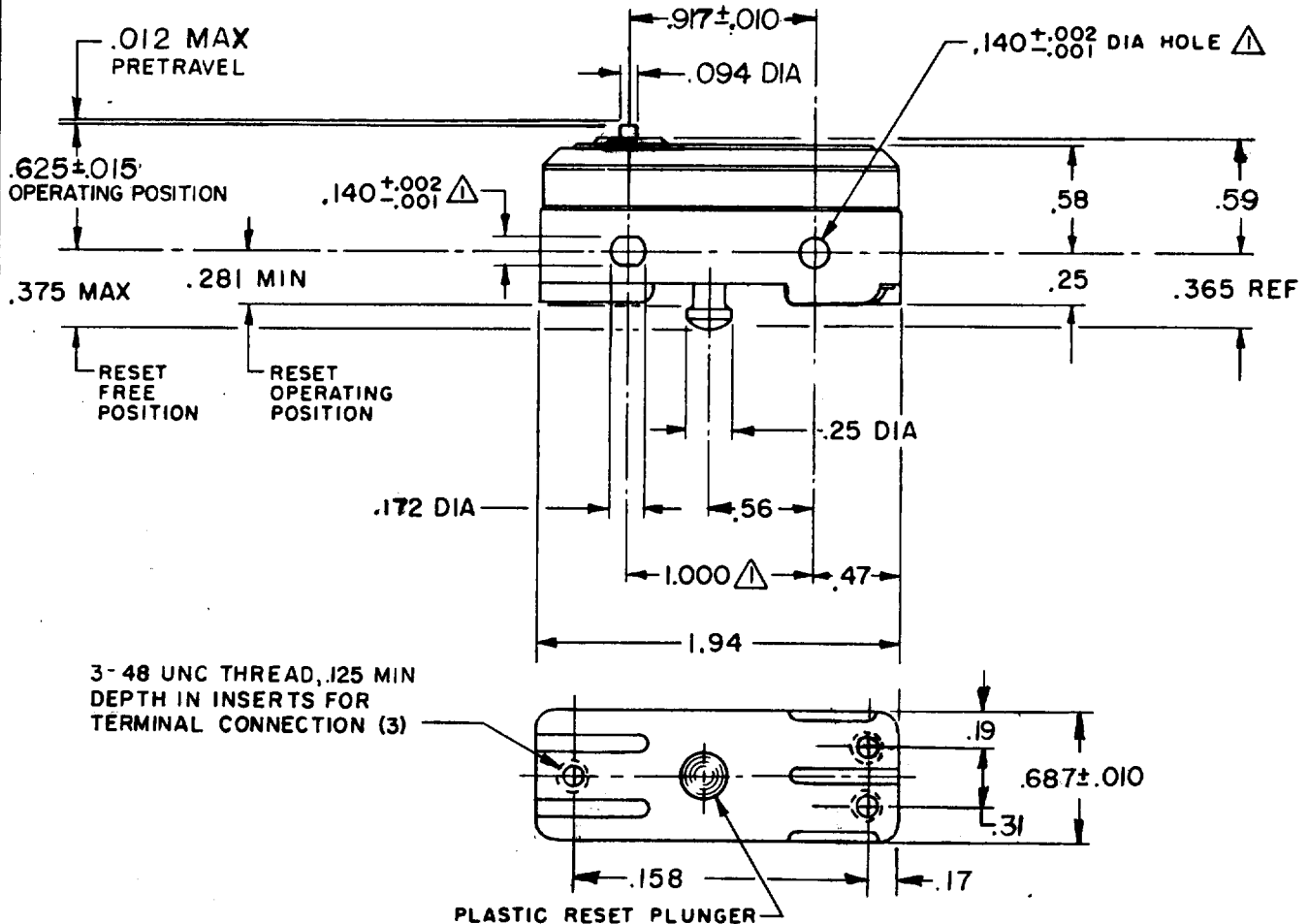
24 JUL

MM

FO-52848-A

DRAWN

MM

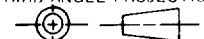


NOTE -

① - MOUNTING HOLES WILL ACCEPT PINS OR SCREWS OF .139 MAX DIA ON $1.000 \pm .002$ CENTERS

THIS DRAWING COVERS A PROPRIETARY ITEM AND IS THE PROPERTY OF MICRO SWITCH, A DIVISION OF HONEYWELL. THIS DRAWING IS NOT TO BE COPIED OR USED WITHOUT THE APPROVAL OF MICRO SWITCH.

THIRD ANGLE PROJECTION



CHARACTERISTICS

OPERATING FORCE-----7-9 OZ
OVERTRAVEL-----005 MIN

RESET CHARACTERISTICS

OPERATING FORCE----- 2-10 OZ
OVERTRAVEL----- 0.5 MIN

ELECTRICAL DATA

CONTACT ARRANGEMENT
SPDT MAINTAINED CONTACT

UL LISTED - FILE E12252
CODE L67 15A-125, 250 OR 480 VAC
1/4HP-125 VAC; 1/2HP-250 VAC
1/2A-125 VDC; 1/4A-250 VDC



SCALE FULL

DO NOT SCALE PRINT

TOLERANCES
APPLY TO DESIGN UNITS. CONVERSIONS ARE ONLY FOR
REFERENCE. UNLESS NOTED, TOLERANCES ARE \pm

	DIM. mm	TOL. mm/in	DIM. in	TOL. mm/in
NO PLACES	x	1/.04		
ONE PLACE	x,x	0.4/.016	x,x	0.8/.03
TWO PLACES	x,xx	0.15/.008	x,xx	0.38/.015
THREE PLACES			x,xxx	0.13/.005
ANGLES				

S I M E T R I C

US CUSTOMARY

DESIGN UNITS

WEIGHT .055 LB

Mouser Electronics

Authorized Distributor

Click to View Pricing, Inventory, Delivery & Lifecycle Information:

[Honeywell:](#)

[BZ-RX20](#)