



CATALOG LISTING

BZ-R88-A2

9
 ISSUE

REPLACES

RELEASE NO.

CHECK

CHECK

五五五五五

As

MECK

66

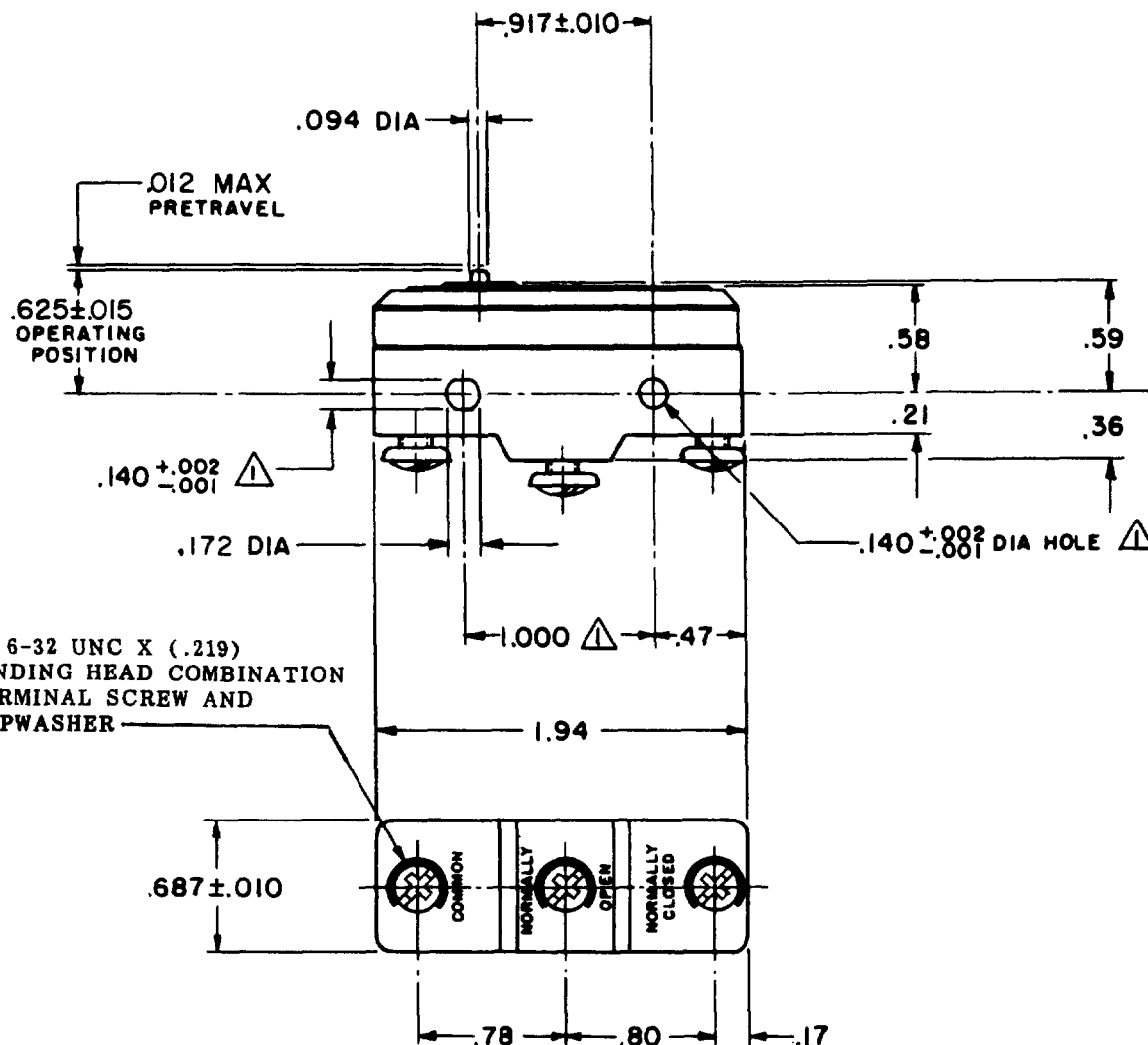
00
W

2

Q

Q




3X 6-32 UNC X (.219)
BINDING HEAD COMBINATION
TERMINAL SCREW AND
CUPWASHER _____



NOTE -

1 - MOUNTING HOLES WILL ACCEPT PINS OR SCREWS
OF .139 MAX DIA ON $1.000 \pm .002$ CENTERS

THIS DRAWING COVERS A PROPRIETARY ITEM AND IS THE PROPERTY OF MICRO SWITCH, A DIVISION OF HONEYWELL. THIS DRAWING IS NOT TO BE COPIED OR USED WITHOUT THE APPROVAL OF MICRO SWITCH.

CHARACTERISTICS	ELECTRICAL DATA	SCALE FULL
OPERATING FORCE-----9 OZ MAX	CONTACT ARRANGEMENT S P D T	DO NOT SCALE PRINT
RELEASE FORCE-----3 OZ MIN	L8 10A 125, <u>250</u> OR 480 VAC	UNLESS OTHERWISE NOTED DIMENSIONS ARE IN INCHES TOLERANCES ARE:
DIFFERENTIAL TRAVEL -----,0007 MAX	L288	ONE PLACE (.0) ±.030 TWO PLACE (.00) ±.018 THREE PLACE (.000) ±.008 ANGLES ±
OVERTRAVEL -----,005 MIN	  	WEIGHT .060 LB

BZ-R88-A2

N

**DRAWING
NUMBER**

3

50

REPLACES

RELEASE NO.

CHECK

CHECK

9983-1-16

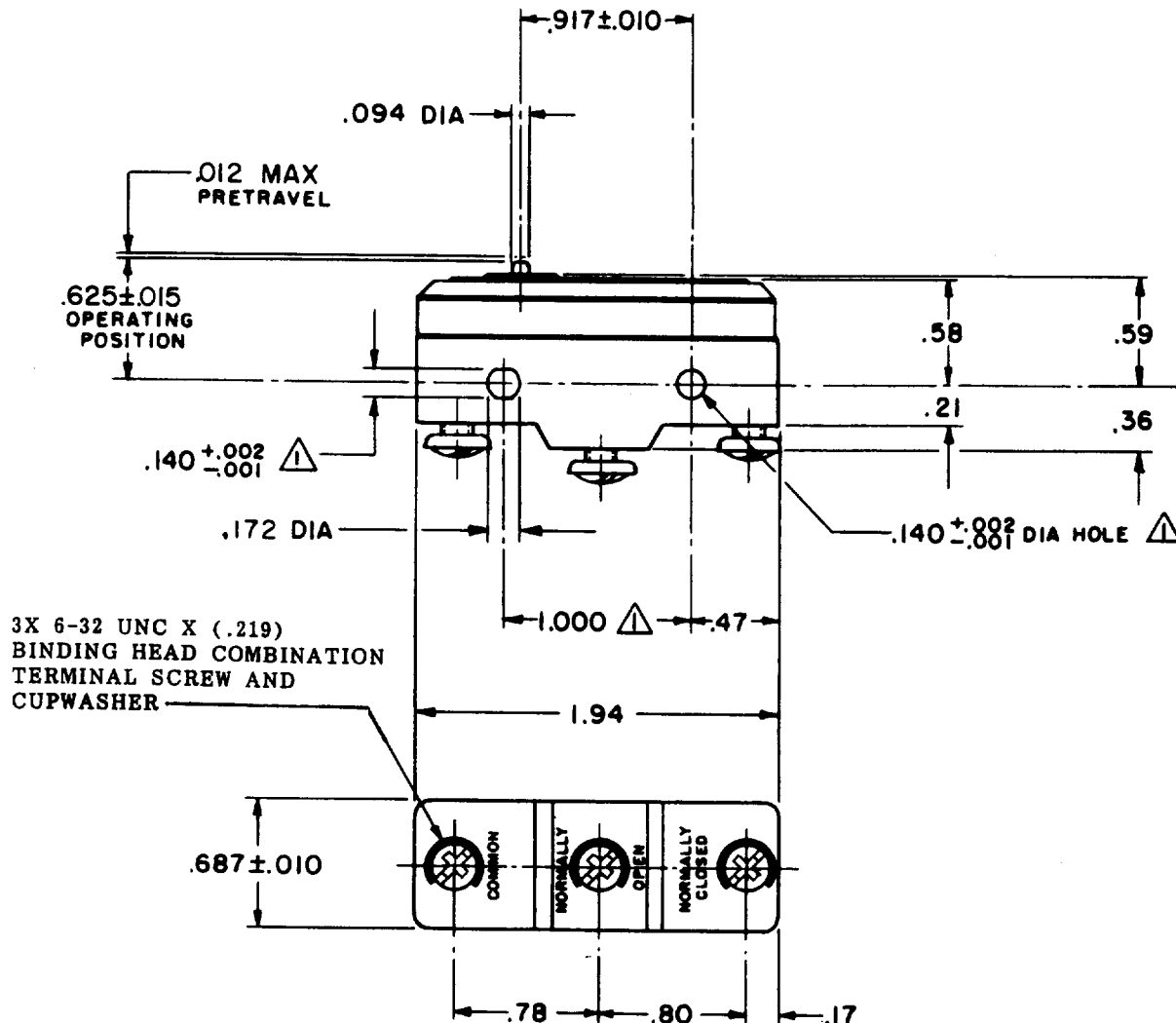
25

00 CHECK


27 FEB 1968

DRAWN


0-50378



NOTE -

 - MOUNTING HOLES WILL ACCEPT PINS OR SCREWS
OF .139 MAX DIA ON 1.000 ±.002 CENTERS

THIS DRAWING COVERS A PROPRIETARY ITEM AND IS THE PROPERTY OF MICRO SWITCH, A DIVISION OF HONEYWELL. THIS DRAWING IS NOT TO BE COPIED OR USED WITHOUT THE APPROVAL OF MICRO SWITCH.

CHARACTERISTICS	ELECTRICAL DATA	SCALE FULL
OPERATING FORCE-----9 OZ MAX	CONTACT ARRANGEMENT S P D T	DO NOT SCALE PRINT
RELEASE FORCE-----3 OZ MIN	UNDERWRITERS' LAB. INC. LISTED RATING -LB- 10 A-125, 250 OR 480 VAC	UNLESS OTHERWISE NOTED DIMENSIONS ARE IN INCHES
DIFFERENTIAL TRAVEL -----.0007 MAX		TOLERANCES ARE:
OVERTRAVEL -----.005 MIN		ONE PLACE (.0) ±.030 TWO PLACE (.00) ±.018 THREE PLACE (.000) ±.005 ANGLES ±
		WEIGHT .060 LB

Mouser Electronics

Authorized Distributor

Click to View Pricing, Inventory, Delivery & Lifecycle Information:

[Honeywell:](#)

[BZ-R88-A2](#)