

**MICRO SWITCH**FREEPORT, ILLINOIS, U.S.A.
A DIVISION OF HONEYWELL

FED. MFG. CODE 91829

SWITCH-BASIC

CATALOG LISTING

BZ-R173-P4X28854
ISSUE 2

CATALOG LISTING

BZ-R173-P4

PAGE 1 OF 1

RELEASE NO. SR 12358

REPLACES

MISSUE
9

CHECK

REVISIONS

A	SR12358	
B	R R R	JUN 66
C	CO22797	
D	CO 34775	
E	CO 73287	
F	CO 75367B	
G	CO 77863	
H	203222	

CHECK

GCH 9 MAY 66

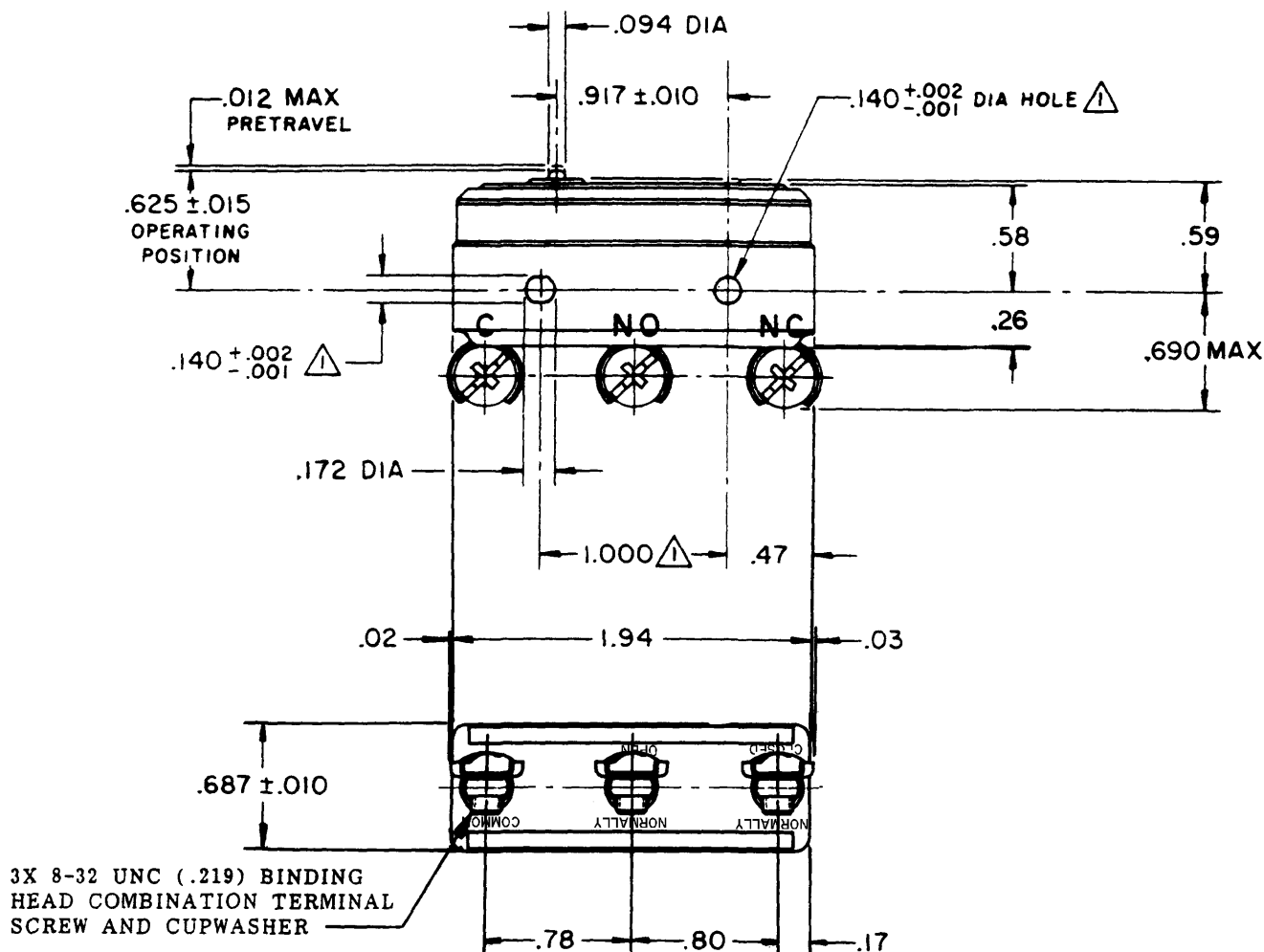
CHECK

R E R 9 MAY 66

MASTER

FO-80376

DRAWN



NOTE -

△ - MOUNTING HOLES WILL ACCEPT PINS OR SCREWS
OF .139 MAX DIA ON 1.000 ±.002 CENTERS

THIS DRAWING COVERS A PROPRIETARY ITEM AND IS THE PROPERTY OF MICRO SWITCH, A DIVISION OF MINNEAPOLIS-HONEYWELL REGULATOR CO. THIS DRAWING IS NOT TO BE COPIED OR USED WITHOUT THE APPROVAL OF MICRO SWITCH.

CHARACTERISTICS

OPERATING FORCE — — — 7 - 10 OZ
DIFFERENTIAL FORCE — — 1/2 - 1 1/4 OZ
DIFFERENTIAL TRAVEL — — — .0005 MAX
OVERTRAVEL — — — .005 MIN

ELECTRICAL DATA

CONTACT ARRANGEMENT S P D T	
L111	15A 125, 250 OR 277 VAC 1/8HP 125 VAC, 1/4HP 250 VAC
L288 L299 L306	16A 250V T85 5E4

SCALE FULL

DO NOT SCALE PRINT

UNLESS OTHERWISE
NOTED

DIMENSIONS ARE IN INCHES

TOLERANCES ARE:

ONE PLACE (.9)	±.030
TWO PLACE (.00)	±.015
THREE PLACE (.000)	±.005
ANGLES	±

WEIGHT .074 LB

**MICRO SWITCH**FREEPORT, ILLINOIS, U.S.A.
A DIVISION OF HONEYWELL

FED. MFG. CODE 91829

SWITCH-BASIC

CATALOG LISTING

BZ-R173-P4X28854
ISSUE 2**BZ-R173-P4****M**DRAWING
NUMBER

8

ISSUE

REPLACES

RELEASE NO. SR 12358

CHECK

REVISIONS

A	SR12358	
10	RER	JUN 66
B	CO22797	
27	S D	APR 67
C	CO22889	
16	M B F	MAY 67
D	CO	34775
10	CO	34775
10	CO	34775
E	CO	73287-G
20	J A L	OCT 83
F	CO	75367B
K	D R	MAR 94
G	CO	77863
1	G J W	MAY 96

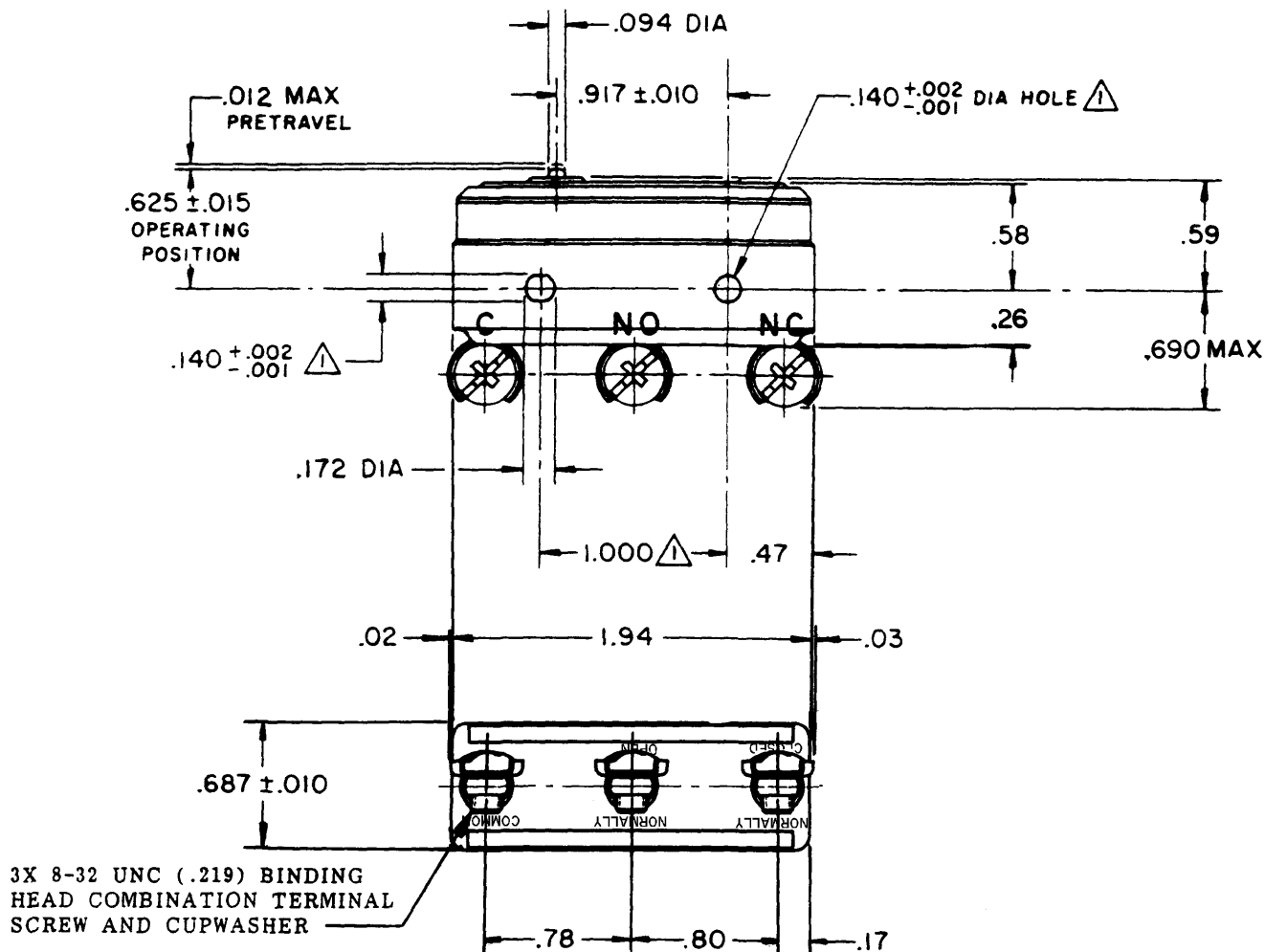
CHECK

GCH

CHECK

MAY 66

MAY 96



NOTE -

△ MOUNTING HOLES WILL ACCEPT PINS OR SCREWS
OF .139 MAX DIA ON 1.000 ± .002 CENTERS

THIS DRAWING COVERS A PROPRIETARY ITEM AND IS THE PROPERTY OF MICRO SWITCH, A DIVISION OF MINNEAPOLIS-HONEYWELL REGULATOR CO. THIS DRAWING IS NOT TO BE COPIED OR USED WITHOUT THE APPROVAL OF MICRO SWITCH.

CHARACTERISTICS

OPERATING FORCE — — — 7 - 10 OZ

DIFFERENTIAL FORCE — — 1/2 - 1 1/4 OZ

DIFFERENTIAL TRAVEL — — .0005 MAX

OVERTRAVEL — — — .005 MIN

ELECTRICAL DATACONTACT ARRANGEMENT
S P D TUL LISTED - FILE E12252
CODE L111 15A-125, 250 OR 277 VAC
1/8HP-125 VAC; 1/4HP-250 VAC**SCALE FULL**

DO NOT SCALE PRINT

UNLESS OTHERWISE
NOTED

DIMENSIONS ARE IN INCHES

TOLERANCES ARE:

ONE PLACE	(.6)	±.030
TWO PLACE	(.00)	±.015
THREE PLACE	(.000)	±.005
ANGLES		±

WEIGHT .074 LB

FORMTEK

FO-80378

DRAWN

Mouser Electronics

Authorized Distributor

Click to View Pricing, Inventory, Delivery & Lifecycle Information:

[Honeywell:](#)

[BZ-R173-P4](#)