

**MICRO SWITCH**FREEPORT, ILLINOIS, U.S.A.
A DIVISION OF HONEYWELL

FED. MFG. CODE 91929

SWITCH - BASIC

CATALOG LISTING

3MNII**3MNII****M**DRAWING
NUMBER

ISSUE

REPLACES

RELEASE NO. SR 12649

CHECK

REVISIONS

CHECK

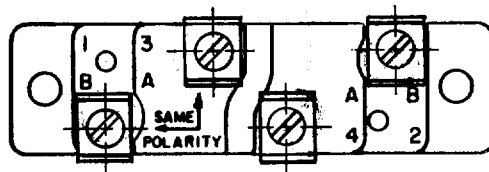
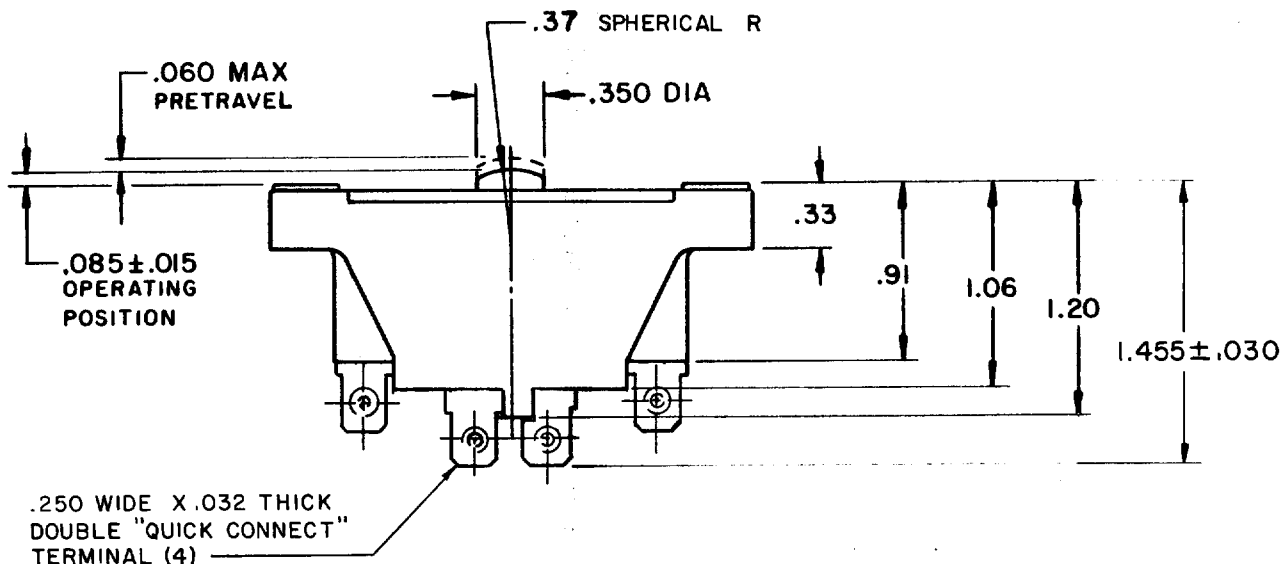
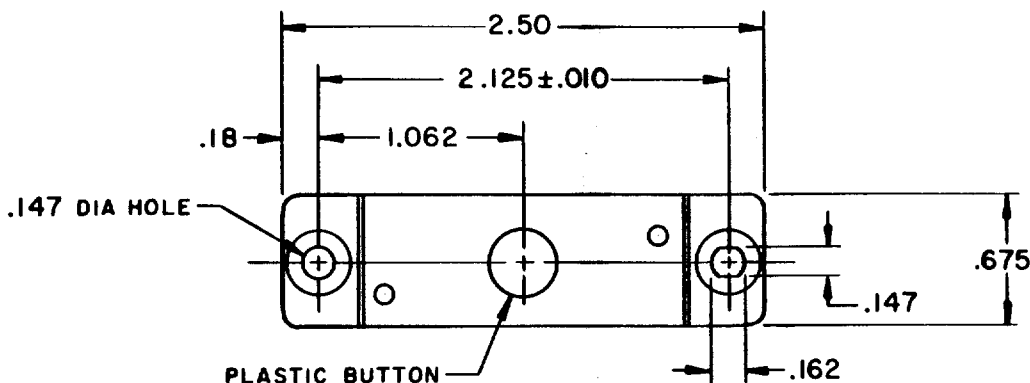
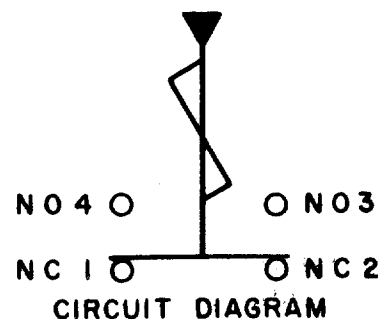
LSD 4 JAN '66

CHECK

WEG 29 DEC 66

DRAWN

FO-50376

**NOTE -**1 - MOUNTING HOLES WILL ACCEPT PINS OR SCREWS
OF .139 MAX DIA ON 2.125 ± .005 CENTERS

THIS DRAWING COVERS A PROPRIETARY ITEM AND IS THE PROPERTY OF MICRO SWITCH, A DIVISION OF HONEYWELL. THIS DRAWING IS NOT TO BE COPIED OR USED WITHOUT THE APPROVAL OF MICRO SWITCH.

CHARACTERISTICS

OPERATING FORCE - - - - - 7 - 11 OZ

RELEASE FORCE - - - - - 4 OZ MIN

DIFFERENTIAL TRAVEL - - - - .015 - .025

OVERTRAVEL - - - - - .080 MIN

ELECTRICAL DATACONTACT ARRANGEMENT
SEE CIRCUIT DIAGRAM**SCALE FULL**

DO NOT SCALE PRINT

UNLESS OTHERWISE
NOTED

DIMENSIONS ARE IN INCHES

TOLERANCES ARE:ONE PLACE (.0) ± .030
TWO PLACE (.00) ± .015
THREE PLACE (.000) ± .005
ANGLES ±

WEIGHT

Mouser Electronics

Authorized Distributor

Click to View Pricing, Inventory, Delivery & Lifecycle Information:

[Honeywell:](#)

[3MN11](#)