

MICRO SWITCH

FREEPORT ILLINOIS, U.S.A.
A DIVISION OF HONEYWELL

FED. MFG. CODE 91929

SWITCH - BASIC

CATALOG LISTING

BZ-R55-A2-S

BZ-R55-A2-S

M

DRAWING
NUMBER

4

ISSUE

REPLACES

RELEASE NO. PR-6918

CHECK

REVISIONS

A CO-78656-B
JALA
25 JUL 95

CHECK

CHECK

CHECK

CHECK

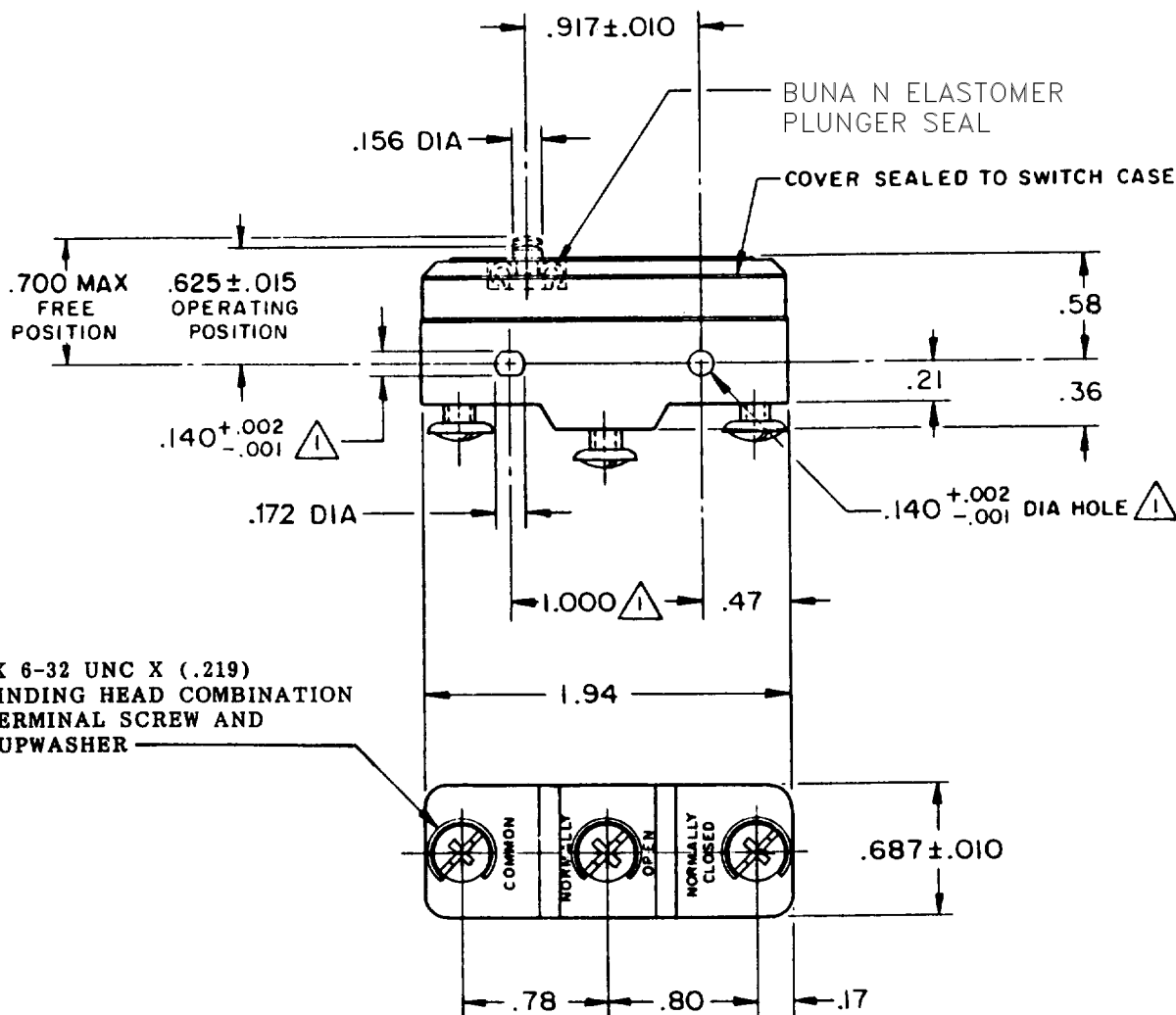
CHECK

CHECK

CHECK

CHECK

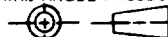
CHECK



NOTE -
MOUNTING HOLES WILL ACCEPT PINS OR SCREWS
OF $.139 \text{ MAX DIA}$ ON $1.000 \pm .002$ CENTERS
2 - SEALED CONSTRUCTION PROVIDES SPLASH RESISTANCE

THIS DRAWING COVERS A PROPRIETARY ITEM AND IS THE PROPERTY OF MICRO SWITCH, A DIVISION OF HONEYWELL. THIS DRAWING IS NOT TO BE COPIED OR USED WITHOUT THE APPROVAL OF MICRO SWITCH.

THIRD ANGLE PROJECTION



CHARACTERISTICS

OPERATING FORCE ----- $6 \frac{1}{2}$ -10 OZ
RELEASE FORCE ----- 4 OZ MIN
DIFFERENTIAL TRAVEL --- $.0002$ -. $.0005$
OVERTRAVEL ----- $.005 \text{ MIN}$

ELECTRICAL DATA

CONTACT ARRANGEMENT
S P D T

UL LISTED-FILE E12252
CODE L103
15A-125, 250 OR 480 VAC
1/8 HP-125 VAC; 1/4 HP-250 VAC



SCALE FULL

DO NOT SCALE PRINT

TOLERANCES

APPLY TO DESIGN UNITS. CONVERSIONS ARE ONLY FOR
REFERENCE. UNLESS NOTED, TOLERANCES ARE \pm

	DIM. mm	TOL. mm/in	DIM. in	TOL. mm/in
NO PLACES	X	1/.04	X	0.01/0.25
ONE PLACE	X.X	0.4/.016	X.X	0.04/.015
TWO PLACES	X.XX	0.15/.005	X.XX	0.13/.005
THREE PLACES	X.XXX		X.XXX	
ANGLES				

DESIGN UNITS ☐ SI METRIC

☒ US CUSTOMARY

WEIGHT .066 LB

FORMTEK

Mouser Electronics

Authorized Distributor

Click to View Pricing, Inventory, Delivery & Lifecycle Information:

[Honeywell:](#)

[BZ-R55-A2-S](#)