

MICRO SWITCH

FREEPORT ILLINOIS, U.S.A.
A DIVISION OF HONEYWELL

FED. MFG. CODE 91929

SWITCH-BASIC

CATALOG LISTING

BE-2R

BE-2R

PAGE 1 OF 1

M

DRAWING
NUMBER

26

X 3

ISSUE

3 X

REPLACES

RELEASE NO. PR-2584

CHECK

REVISIONS

A	CO	32144	26 JUL 73
B	CO	3036627	8 APR 76
C	CO	58782	24 JAN 86
D	CO	77590	10 JUN 94
E	CO	94212-C	20 SEP 99

CHECK

CHECK

CHECK

CHECK

CHECK

CHECK

CHECK

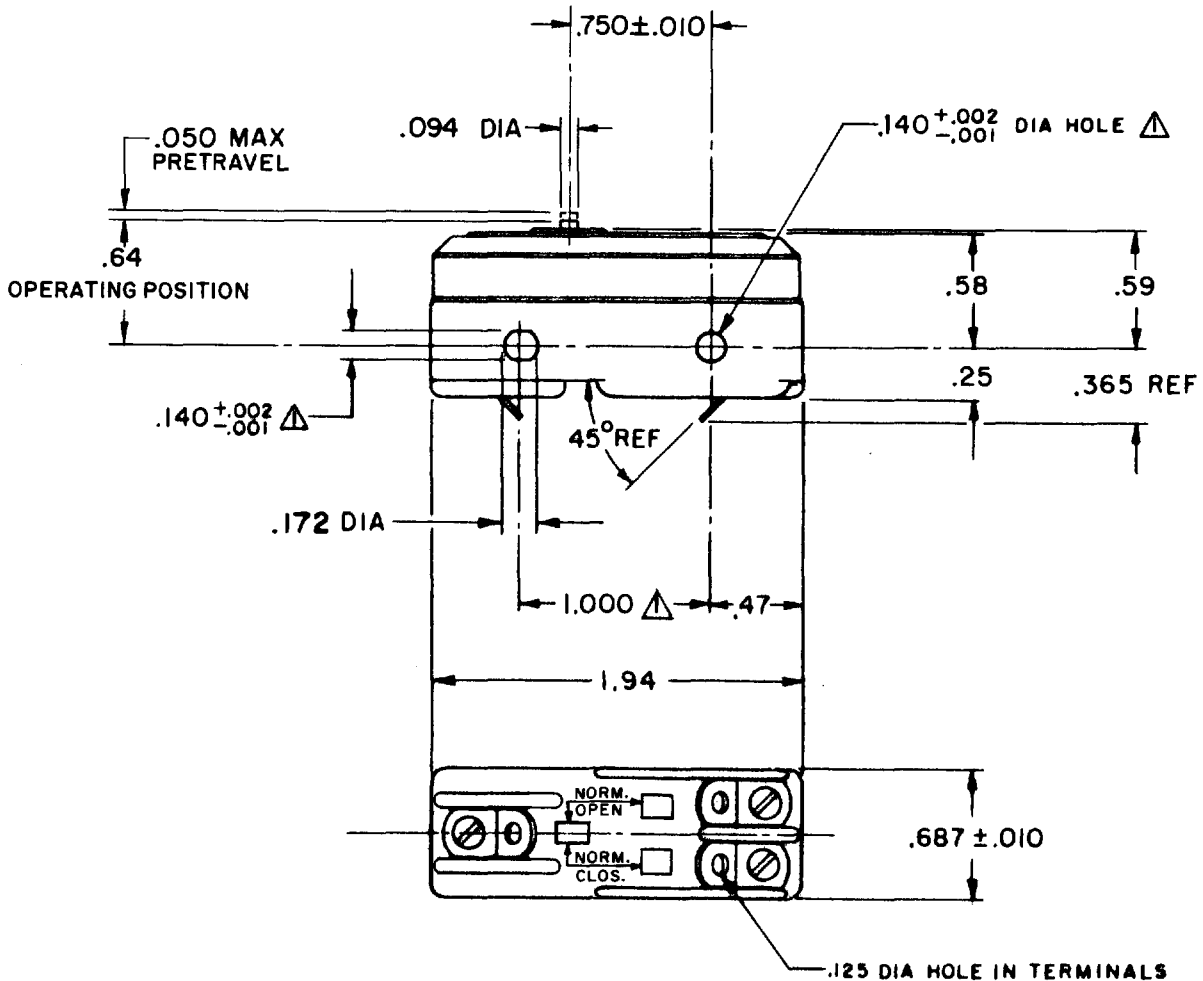
CHECK

CHECK

CHECK

CHECK

CHECK



NOTE

⚠ MOUNTING HOLES WILL ACCEPT PINS OR SCREWS
OF .139 MAX DIA ON 1.000 ± .002 CENTERS

THIS DRAWING COVERS A PROPRIETARY ITEM AND IS THE PROPERTY OF MICRO SWITCH, A DIVISION OF HONEYWELL. THIS DRAWING IS NOT TO BE COPIED OR USED WITHOUT THE APPROVAL OF MICRO SWITCH.

CHARACTERISTICS

OPERATING FORCE — — — — 14-22 OZ
RELEASE FORCE — — — — 10 OZ MIN
DIFFERENTIAL TRAVEL — — .0020-.0075
OVERTRAVEL — — — — .010 MIN

ELECTRICAL DATA

CONTACT ARRANGEMENT
S P D T
25-A-125, 250, 480 VAC 1 HP-125 VAC;
2 HP-250 OR 480 VAC; PILOT DUTY
750 VA-480 VAC, MAX; 60/75°C (Cu)

SCALE FULL

DO NOT SCALE PRINT

UNLESS OTHERWISE
NOTED

DIMENSIONS ARE IN INCHES

TOLERANCES ARE:

ONE PLACE (.0) ± .030
TWO PLACE (.00) ± .015
THREE PLACE (.000) ± .005
ANGLES ±

WEIGHT .063 LB



FORMTEK

FO-50378-1A

DRAWN

D B W 20 APR 72

Mouser Electronics

Authorized Distributor

Click to View Pricing, Inventory, Delivery & Lifecycle Information:

[Honeywell:](#)

[BE-2R](#)