

MICRO SWITCH

A DIVISION OF MINNEAPOLIS-HONEYWELL REGULATOR COMPANY
MINNEAPOLIS, MINNESOTA

FED. MFR. CODE 91929

SWITCH - BASIC

CATALOG LISTING

BA-2RV22T

BA-2RV22T
ISSUE 1

REPLACES

RELEASE NO.

CHECK

CHECK

CHECK

CHECK

CHECK

CHECK

CHECK

CHECK

CHECK

CHECK

BA-2RV22T

PAGE 1 OF 1

M

DRAWING
NUMBER

9

ISSUE

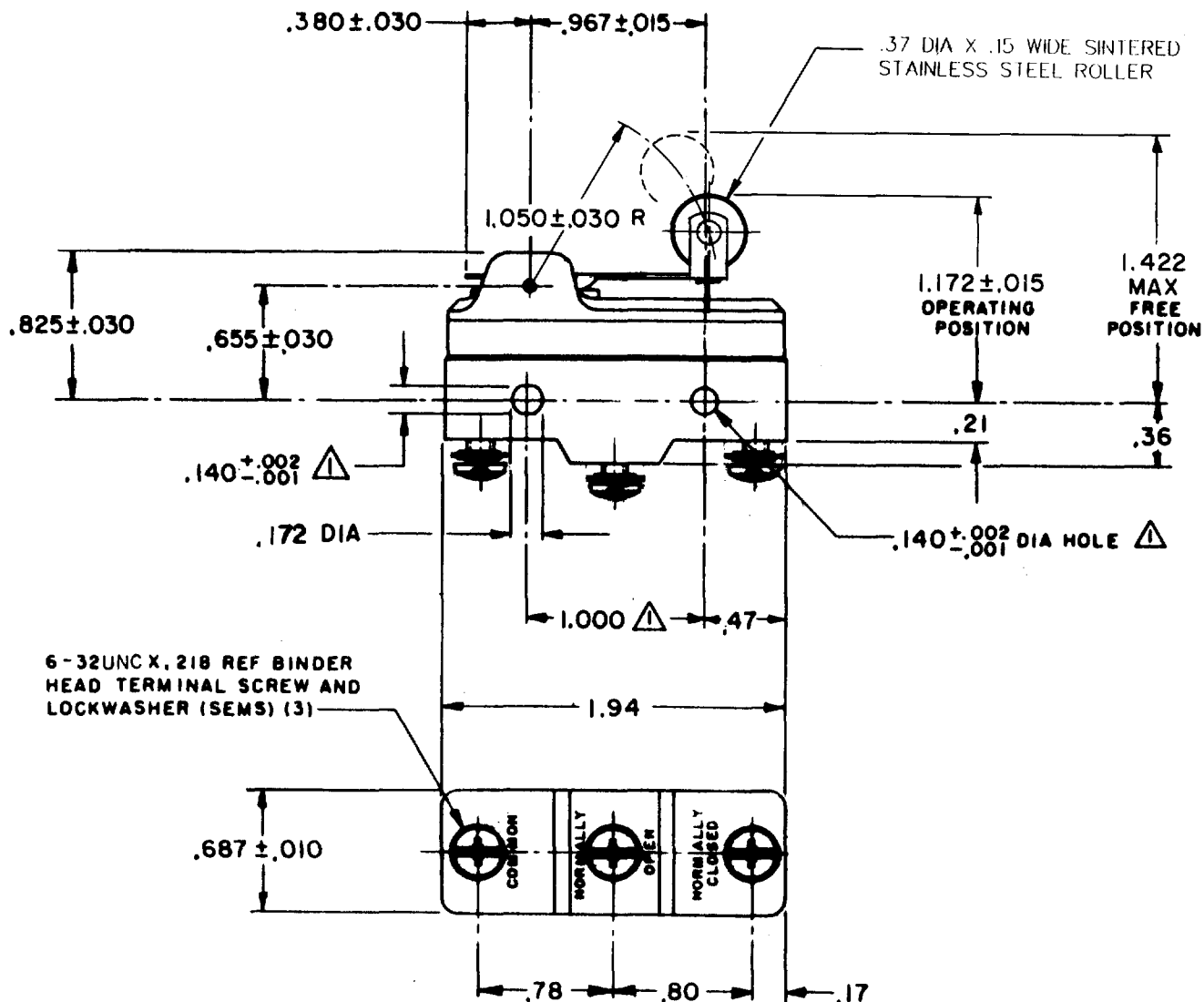
REVISIONS

A	CO	15663	6 CH	28 DEC 61
B	CO	34312	D B W	25 APR 75
C	CO	59351-0	JWB	18 JUL 91
D	CO	70184-6	G J W	7 MAR 92
E	CO	72367	J J O	1 MAY 92
F	CO	75204B	DAW	1 FEB 94
G	CO	77590	SAD	9 JUN 94
H	CO	93346	DLT	26 AUG 98

6-32UNC X .218 REF BINDER
HEAD TERMINAL SCREW AND
LOCKWASHER (SEMS) (3)

NOTE

△ - MOUNTING HOLES WILL ACCEPT PINS OR SCREWS
OF .139 MAX DIA ON 1.000 ± .002 CENTERS



THIS DRAWING COVERS A PROPRIETARY ITEM AND IS THE PROPERTY OF MICRO SWITCH, A DIVISION OF MINNEAPOLIS-HONEYWELL REGULATOR CO. THIS DRAWING IS NOT TO BE COPIED OR USED WITHOUT THE APPROVAL OF MICRO SWITCH.

CHARACTERISTICS

OPERATING FORCE ----- 6 OZ MAX
RELEASE FORCE ----- 1 1/2 OZ MIN
PRETRAVEL ----- .250 MAX
DIFFERENTIAL TRAVEL ----- .045 MAX
OVERTRAVEL ----- .030 MIN

ELECTRICAL DATA

CONTACT ARRANGEMENT
S P D T

L23

L288
L299
L308

UNDERWRITERS' LAB. INC. LISTED RATING
20A - 125, 250 OR 480 VAC
10A - 125 VAC "L"
1HP - 125 VAC, 2HP - 250 VAC
1/2A - 125 VDC, 1/4A - 250 VDC



20(3)A 250V ~ T85 5E4

SCALE ---- FULL

DO NOT SCALE PRINT

UNLESS OTHERWISE
SPECIFIED
DIMENSIONS ARE IN INCHES
TOLERANCES ARE:
ONE PLACE (.0) ± .030
TWO PLACE (.00) ± .015
THREE PLACE (.000) ± .008
ANGLES ±

WEIGHT

FORMTEK

FO-50378

Mouser Electronics

Authorized Distributor

Click to View Pricing, Inventory, Delivery & Lifecycle Information:

[Honeywell:](#)

[BA-2RV22T](#)