



MICRO SWITCH

FREEPORT, ILLINOIS, U.S.A.
A DIVISION OF HONEYWELL

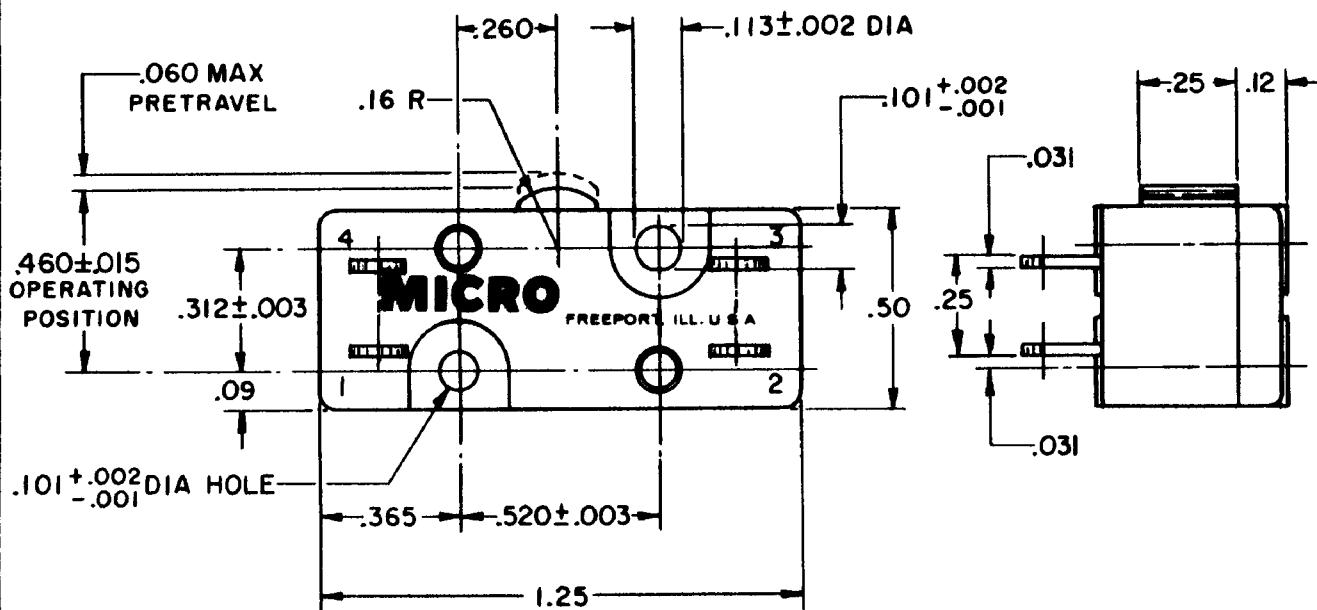
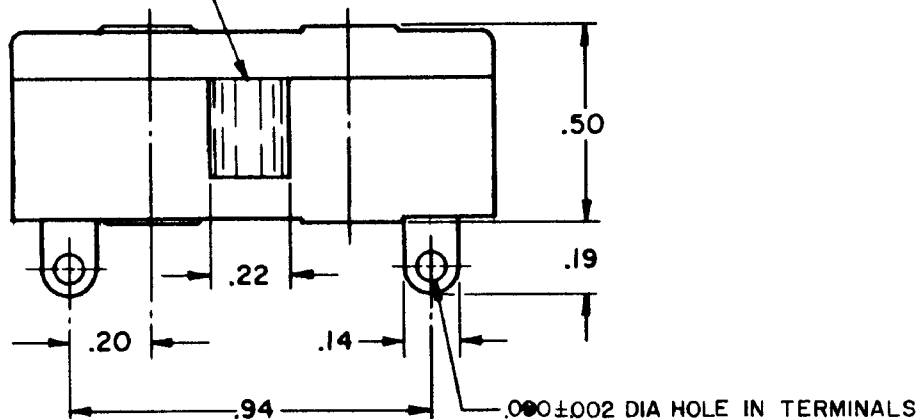
FED. MFG. CODE 91929

SWITCH-BASIC

CATALOG LISTING

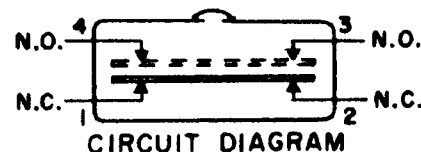
ITBI-3

BLACK PLASTIC PLUNGER



NOTE -

- 1 - TERMINALS ARE PLATED FOR SOLDERING
- 2 - TERMINALS 1 AND 2 NORMALLY CLOSED CIRCUIT
- 3 - TERMINALS 3 AND 4 NORMALLY OPEN CIRCUIT



THIS DRAWING COVERS A PROPRIETARY ITEM AND IS THE PROPERTY OF MICRO SWITCH, A DIVISION OF HONEYWELL. THIS DRAWING IS NOT TO BE COPIED OR USED WITHOUT THE APPROVAL OF MICRO SWITCH.

CHARACTERISTICS

OPERATING FORCE ----- 7-14 OZ
RELEASE FORCE ----- 4 OZ MIN
DIFFERENTIAL TRAVEL ----- .010-.025
OVERTRAVEL ----- .010 MIN

ELECTRICAL DATA

CONTACT ARRANGEMENT
SEE DIAGRAM

L25 10A - 125 OR 250 VAC
1/2HP - 125 VAC



SCALE 2 TO 1

DO NOT SCALE PRINT

UNLESS OTHERWISE NOTED
DIMENSIONS ARE IN INCHES

TOLERANCES ARE:
ONE PLACE (.0) ±.030
TWO PLACE (.00) ±.015
THREE PLACE (.000) ±.005
ANGLES ±

WEIGHT

ITBI-3

M

DRAWING
NUMBER

ISSUE
X B

REVISIONS

A	CO21235	RLD	MAR 66
B	CO21553	M B F	10 JUN 66
C	CO33498	D B W	14 MAY 74
D	CO36022	R E R	29 OCT 73
E	CO39824	18 SEP 86	
F	CO78226	DLT	17 OCT 94

REPLACES

RELEASE NO.

CHECK

CHECK

CHECK

CHECK

CHECK

CHECK

CHECK

CHECK

CHECK

CHECK

CHECK

PC-50376

DRAWN

Mouser Electronics

Authorized Distributor

Click to View Pricing, Inventory, Delivery & Lifecycle Information:

[Honeywell:](#)

[1TB1-3](#)