

19HM1

M

DRAWING
NUMBER

2

ISSUE

REPLACES

RELEASE NO. PR-18755

CHECK

REVISIONS

A CO-71228
TSM
5 NOV 91

CHECK

28 DEC 90

D A W

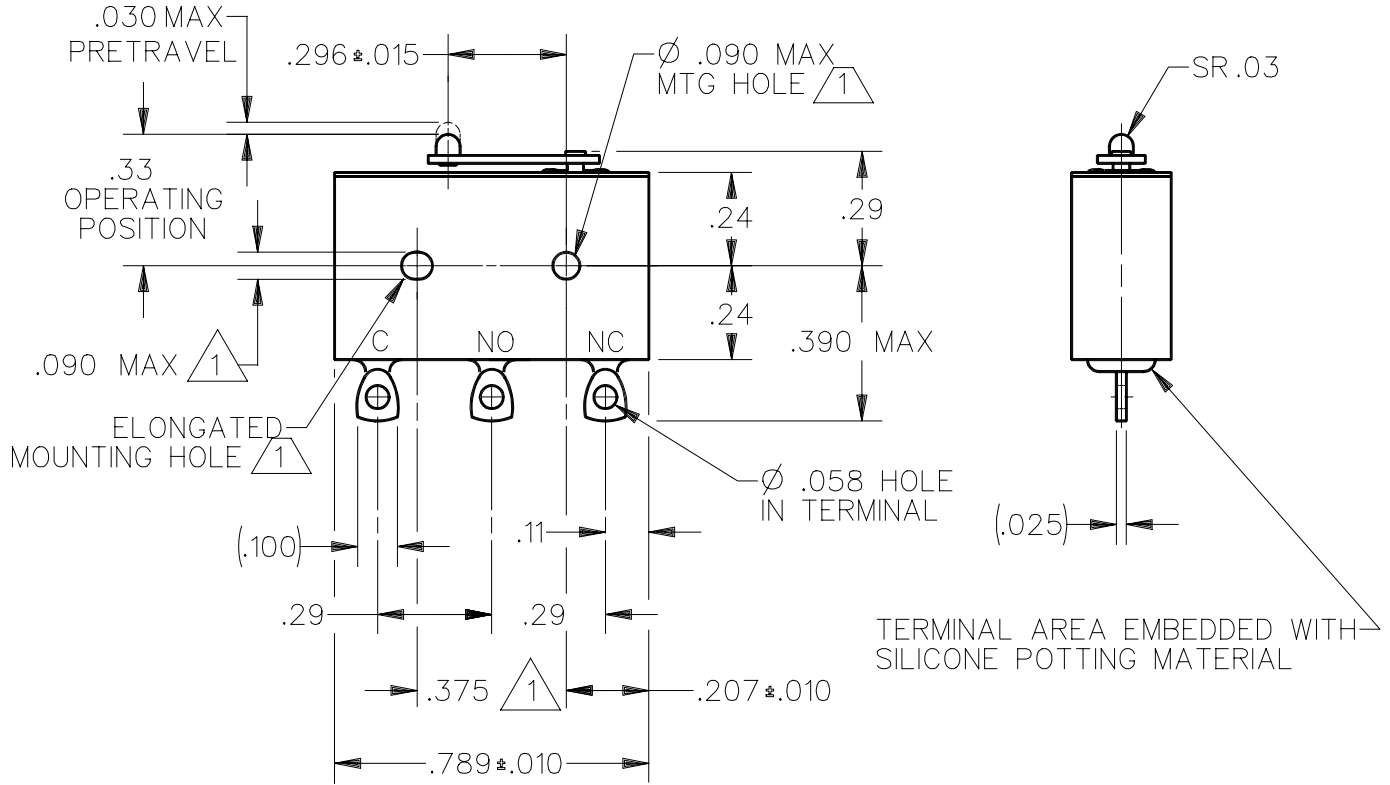
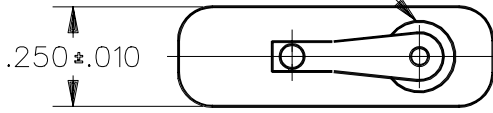
CHECK

21 DEC 90

S A V

DRAWN

WOBBLEFRAM ACTUATOR SEAL

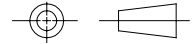


NOTES

- 1 MOUNTING HOLES WILL ACCEPT PINS OR SCREWS OF Ø .087 MAX ON .375±.002 CENTERS
- 2 - FOR USE IN TEMPERATURE RANGE -300°F TO +500°F
- 3 - HERMETICALLY SEALED (METAL-TO-METAL, GLASS-TO-METAL)
- 4 - ALL EXPOSED PARTS ARE OF CORROSION RESISTANT MATERIALS
- 5 - TERMINALS ARE TINNED FOR SOLDERING
- 6 - DO NOT: APPLY MORE THAN 1 1/2 INCH-LBS OF TORQUE WHEN TIGHTENING MOUNTING SCREWS
- 7 - 24K GOLD MOVABLE CONTACT AND GOLD ALLOY STATIONARY CONTACTS

THIS DRAWING COVERS A PROPRIETARY ITEM AND IS THE PROPERTY OF MICRO SWITCH, A DIVISION OF HONEYWELL. THIS DRAWING IS NOT TO BE COPIED OR USED WITHOUT THE APPROVAL OF MICRO SWITCH.

THIRD ANGLE PROJECTION



CHARACTERISTICS

OPERATING FORCE — — — — 7 OZ MAX
RELEASE FORCE — — — — — 1 OZ MIN
DIFFERENTIAL TRAVEL — — — .006 MAX
OVERTRAVEL — — — — — .003 MIN

ELECTRICAL DATA

CONTACT ARRANGEMENT
S P D T

28 VOLTS DC RATING
INDUCTIVE -- SEA LEVEL - 1/4 AMP
70,000 FT - 1/4 AMP
RESISTIVE -- SEA LEVEL - 1/2 AMP
70,000 FT - 1/2 AMP

SCALE 2 : 1

DO NOT
SCALE PRINT

UNLESS OTHERWISE SPECIFIED TOLERANCES ARE

ONE PLACE (.0)	±.030
TWO PLACE (.00)	±.015
THREE PLACE (.000)	±.005
ANGLES	±

WEIGHT .014 LB MAX

DDM/CAD

Mouser Electronics

Authorized Distributor

Click to View Pricing, Inventory, Delivery & Lifecycle Information:

[Honeywell:](#)

[19HM1](#)