



**MICRO SWITCH**  
 A DIVISION OF MINNEAPOLIS-HONEYWELL REGULATOR COMPANY  
 BIRMGHAM, ILLINOIS  
 FED. MFR. CODE 91929

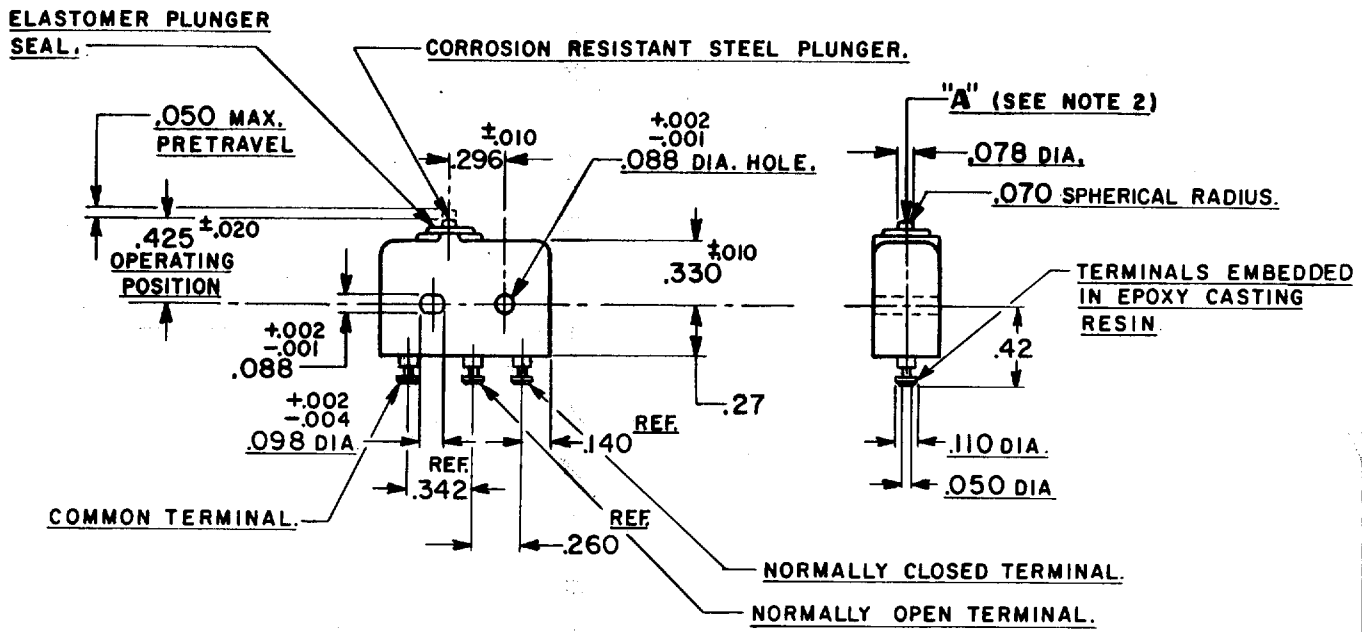
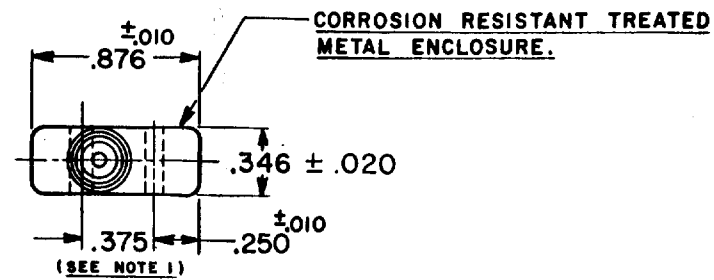
**SWITCH - BASIC**

SKETCH 15259  
 ISSUE 1

ISEI-T  
 DRAWING NUMBER  
 X 2  
 ISSUE X 4  
 RELEASE NO. SR 6804

REVISIONS  
 A CO-13455  
 23 MAR 59  
 B CO-18028  
 14 MAY 63  
 C CO-34213  
 J A L  
 24 SEPT 74

FO-50378  
 DRAWN  
 R. E. R. 1 AUG 57  
 CHECK JRH 12 AUG 57  
 CHECK CNT 2 AUG 57



**NOTE -**  
 1-MOUNTING HOLES WILL ACCEPT .087 MAX. DIA. PINS OR SCREWS ON .375 ±.002 CENTERS.  
 2-ACTUATION IN LINE WITH ARROW "A" IS RECOMMENDED.

THIS DRAWING COVERS A PROPRIETARY ITEM AND IS THE PROPERTY OF MICRO SWITCH, A DIVISION OF HONEYWELL. THIS DRAWING IS NOT TO BE COPIED OR USED WITHOUT THE APPROVAL OF MICRO SWITCH.

CHARACTERISTICS	ELECTRICAL DATA	SCALE - FULL
OPERATING FORCE - - - - - 5 - 17 OZ.	CONTACT ARRANGEMENT S. P. D. T.	DO NOT SCALE PRINT
RELEASE FORCE - - - - - 4 OZ. MIN.	<b>250 VAC</b> - - - - - 5 AMP <b>30 VOLTS DC RATING</b> INDUCTIVE - - - - - SEA LEVEL - 3 AMP 50,000 FT. - 2.5 AMP RESISTIVE - - - - - SEA LEVEL - 5 AMP 50,000 FT. - 5 AMP (A) MAXIMUM INRUSH - - - - - 24 AMP	UNLESS OTHERWISE SPECIFIED DIMENSIONS ARE IN INCHES
RELEASE TRAVEL - - - - - .004 MIN.		TOLERANCES ARE: ONE PLACE (.0) ±.030 TWO PLACE (.00) ±.015 THREE PLACE (.000) ±.005 ANGLES ±
DIFFERENTIAL TRAVEL - - - - - .004 MAX		WEIGHT .26 OZ MAX (B)
OVERTRAVEL - - - - - .003 MIN.		

# Mouser Electronics

Authorized Distributor

Click to View Pricing, Inventory, Delivery & Lifecycle Information:

[Honeywell:](#)

[1SE1-T](#)