



MICRO SWITCH

FREEPORT ILLINOIS
A DIVISION OF HONEYWELL
FED. MFG. CODE 91929

SWITCH-BASIC

CATALOG LISTING

1HS3

1HS3

M

DRAWING NUMBER

ISSUE 17

PAGE 1 OF 1

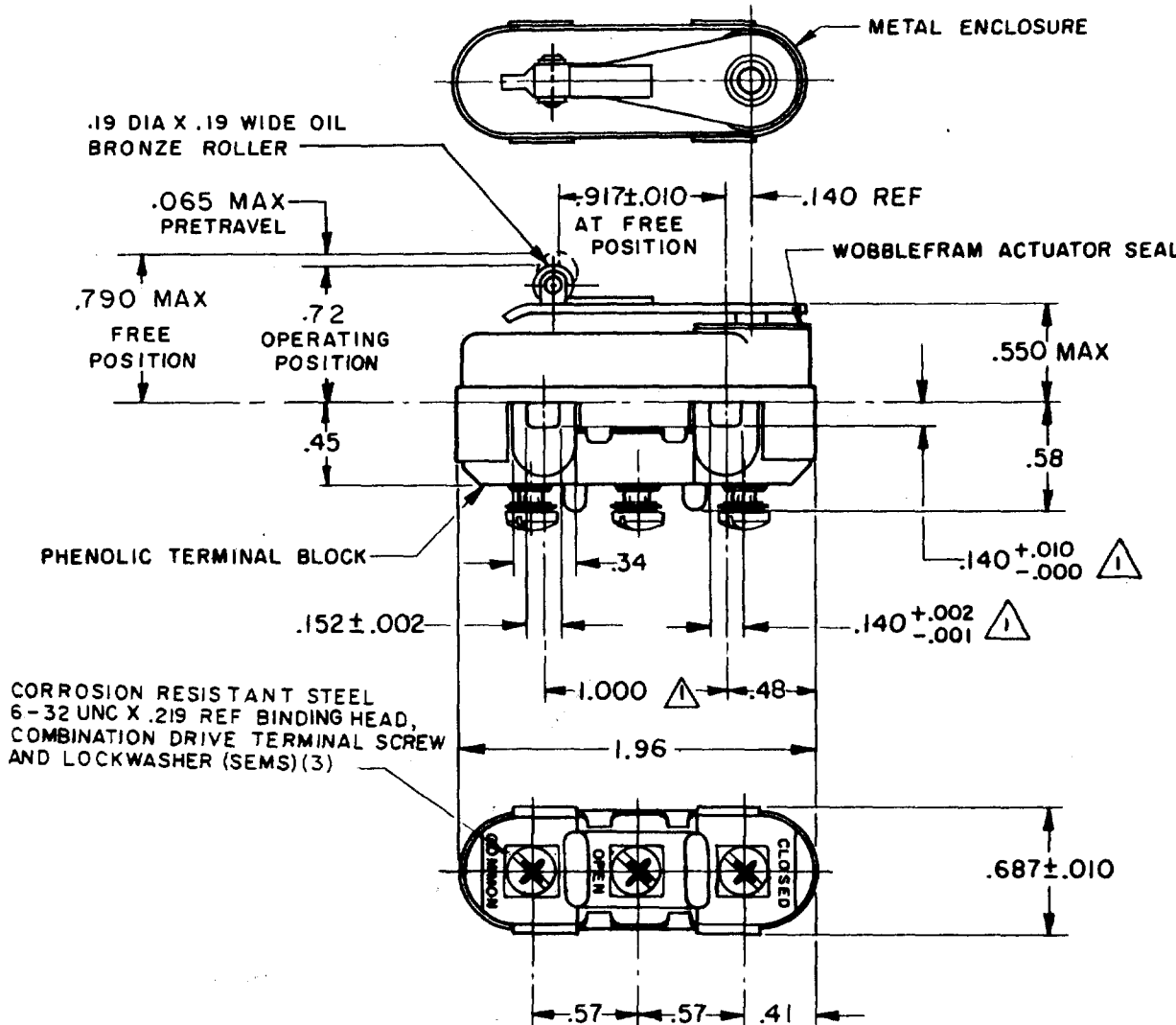
REPLACES

RELEASE NO.

CHECK

REVISIONS

A	CO17633	M B F	14 FEB 63	CHECK
B	CO30206	D B W	13 MAR 72	CHECK
C	CO55162	T S K	27 NOV 85	CHECK
D	CO62736	M A M	15 MAR 88	CHECK
E	CO61043	B G S	16 SEP 88	CHECK
F	CO72580	D A W	20 AUG 92	CHECK
G	CO75625	J D B	14 JULY 93	CHECK
H	CO76375	W E S	31 AUG 93	CHECK
J	CO94122	T S M	12 MAR 99	CHECK



NOTE-

- ▲ MOUNTING HOLES WILL ACCEPT PINS OR SCREWS OF .139 MAX DIA ON 1.000 ± .002 CENTERS
- 2 - TRAVEL CHARACTERISTICS ARE REFERENCED FROM THE UPPER SURFACE OF THE MOUNTING HOLES WITH THIS CONSTRUCTION
- 3 - FOR USE IN AMBIENT TEMPERATURE RANGE FROM MINUS 65° F TO PLUS 250° F

THIS DRAWING COVERS A PROPRIETARY ITEM AND IS THE PROPERTY OF MICRO SWITCH, A DIVISION OF MINNEAPOLIS-HONEYWELL REGULATOR CO. THIS DRAWING IS NOT TO BE COPIED OR USED WITHOUT THE APPROVAL OF MICRO SWITCH.

CHARACTERISTICS	ELECTRICAL DATA			SCALE FULL
OPERATING FORCE	CONTACT ARRANGEMENT S P D T			DO NOT SCALE PRINT
RELEASE FORCE	LINE VOLTAGE	INDUCTIVE LOAD	RESISTIVE LOAD	UNLESS OTHERWISE SPECIFIED DIMENSIONS ARE IN INCHES TOLERANCES ARE: ONE PLACE (.0) ±.030 TWO PLACE (.00) ±.015 THREE PLACE (.000) ±.005 ANGLES ±
DIFFERENTIAL TRAVEL	28 VDC	8 AMP (SEA LEVEL - 100,000 FT)	25 AMP	
OVERTRAVEL	125 VAC	1 AMP (SEA LEVEL - 70,000 FT)	5 AMP	
	L277 1A-125VAC, 5A-28VDC			WEIGHT 1.6 OZ MAX

FO-50378 FORMTEK

DRAWN

M B F 14 FEB 63

Mouser Electronics

Authorized Distributor

Click to View Pricing, Inventory, Delivery & Lifecycle Information:

[Honeywell:](#)

[1HS3](#)