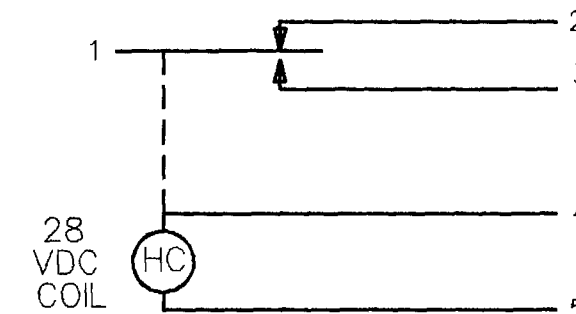
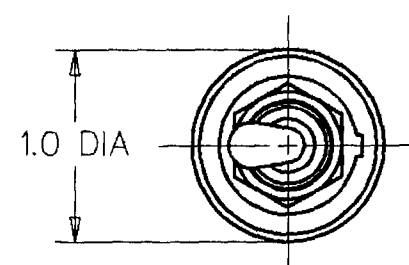


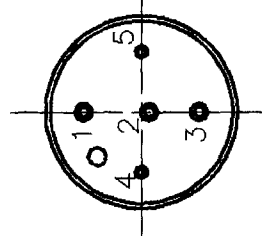
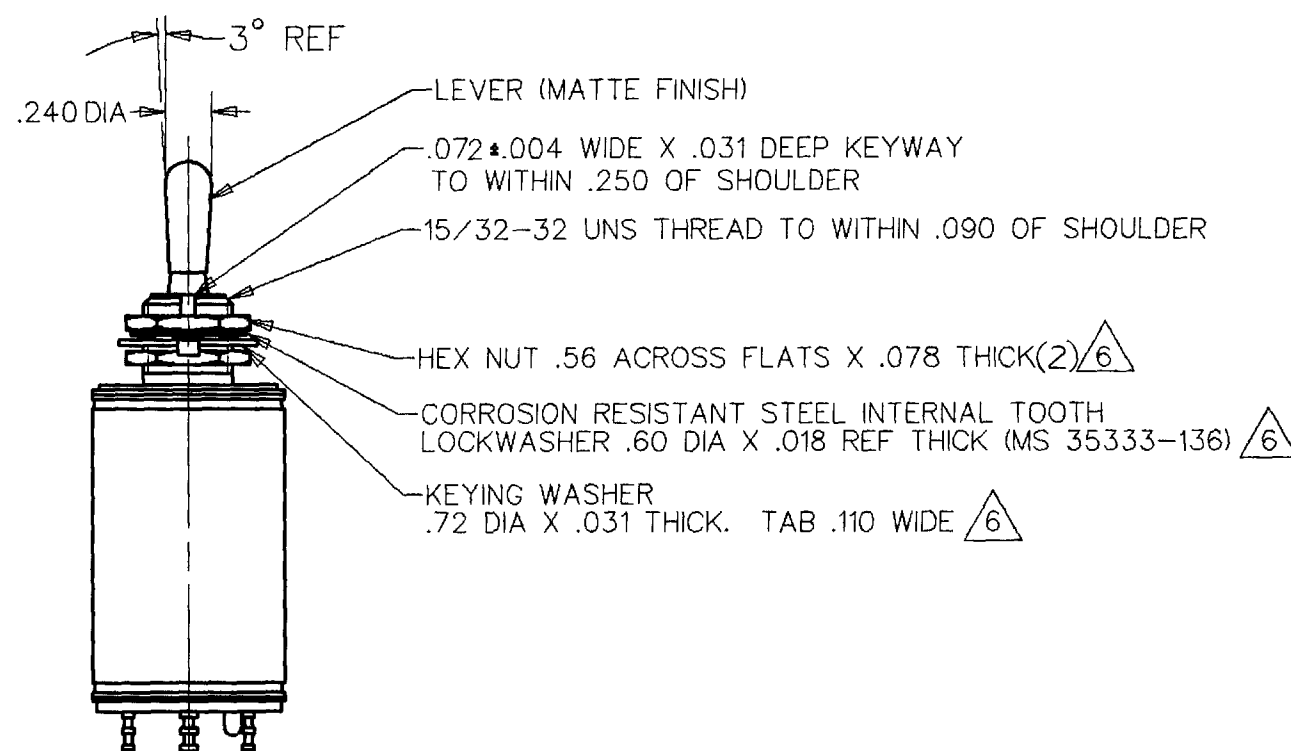
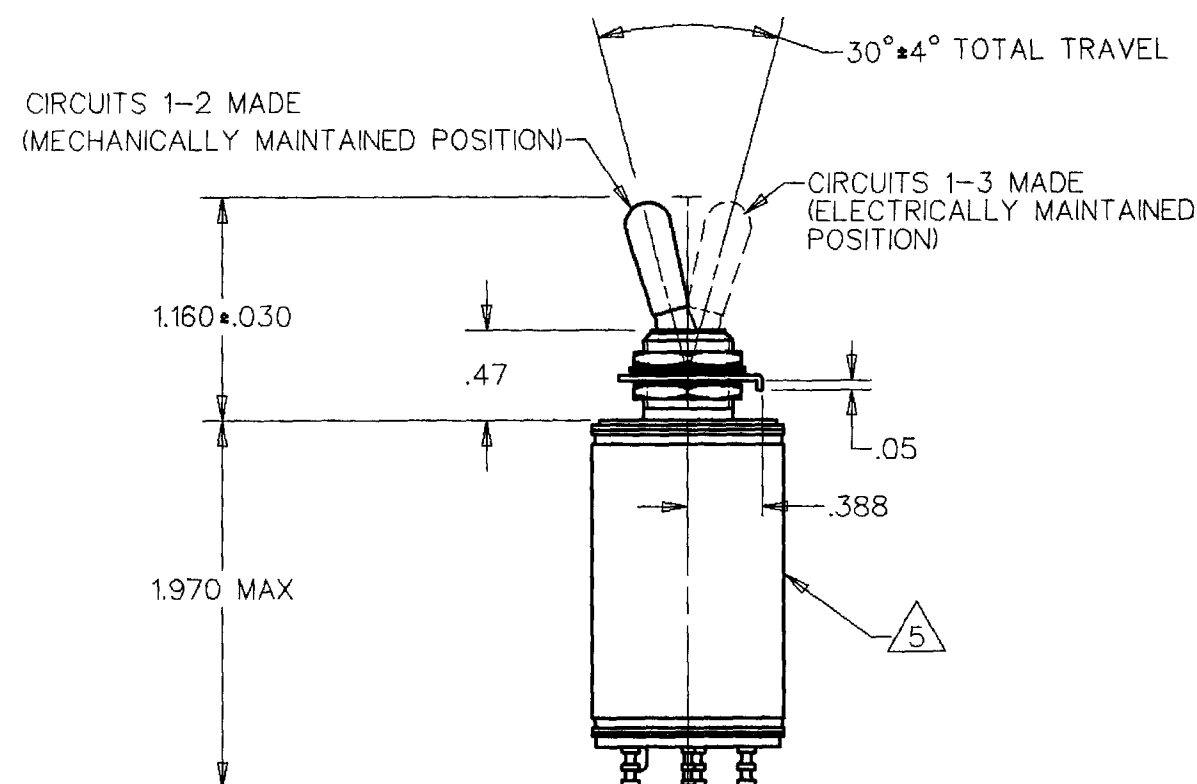
MICRO SWITCH
FREEPORT, ILLINOIS, U. S. A.
A DIVISION OF HONEYWELL
FED. MFG. CODE 91929

SWITCH - TOGGLE (MAGNETIC HOLD-IN)

CATALOG LISTING
25ET11



CIRCUIT DIAGRAM
(MECHANICALLY MAINTAINED
POSITION)



- NOTES
- 1 - EXPOSED PARTS ARE OF CORROSION RESISTANT MATERIAL OR ARE SUITABLY PROTECTED TO PREVENT CORROSION, ENCLOSURE FINISHED WITH BLUE EPOXY BASED ENAMEL COLOR NO. 25184 PER FEDERAL STANDARD 595
 - 2 - SWITCH SEALED PER MIL-S-5594
 - 3 - HOLD IN VOLTAGE: THE MINIMUM SPECIFIED VOLTAGE AT WHICH THE LEVER WILL REMAIN ACTUATED. HOLD IN MAY OCCUR AT A LOWER VALUE. DROP OUT VOLTAGE: THE VOLTAGE RANGE IN WHICH THE LEVER WILL BE RELEASED
 - 4 - CIRCUITS CAN BE TRANSFERRED MANUALLY. ENERGIZING THE COIL WILL NOT CAUSE TRANSFER OF CIRCUITS
 - 5 - CIRCUIT IDENTIFICATION IS SHOWN ON SWITCH HARDWARE MAY BE FURNISHED UNASSEMBLED PER MIL-S-5594
 - 6 -

THIS DRAWING COVERS A PROPRIETARY ITEM AND IS THE PROPERTY OF MICRO SWITCH, A DIVISION OF HONEYWELL. THIS DRAWING IS NOT TO BE COPIED OR USED WITHOUT THE APPROVAL OF MICRO SWITCH

SCALE FULL

DO NOT SCALE PRINT

CHARACTERISTICS 3

SOLENOID RATING AT 20° C
STEADY STATE LIMITS --- 20-29 VDC
HOLD IN --- 15 VDC
DROP OUT --- 0-15 VDC
COIL RESISTANCE --- 220 OHM MIN
OPERATING FORCE --- 7 LBS MAX

ELECTRICAL DATA

CONTACT ARRANGEMENT
SPDT

VOLTAGE	RATINGS IN AMPHERES							
	SEA LEVEL				65,000 FT			
	INRUSH	RES	IND	MOTOR	INRUSH	RES	IND	MOTOR
28 VOLTS DC	4	3	4		4	2.5	4	

TOLERANCES
APPLY TO DESIGN UNITS. CONVERSIONS ARE ONLY FOR REFERENCE. UNLESS NOTED, TOLERANCES ARE ±

ONE PLACE (.01) ±.030
TWO PLACES (.001) ±.015
THREE PLACES (.0001) ±.005
ANGLES ±
RAW MATERIAL--COMMERCIAL STANDARD
THIRD ANGLE PROJECTION



WEIGHT 4.0 OZ MAX

OVERRIDE FORCE AT 28 VDC - 24-160 OZ.

25ET11

PAGE 1 OF 1

M

DRAWING
NUMBER

9

ISSUE

REVISIONS

A	CO	61410
B	JJS	29 JUN 88
B	GJW	204819
		JAN 02

CHECK

CHECK

30 JUN 88

MAM

CHECK

29 JUN 88

RASTER

DRAWN

DJS

Mouser Electronics

Authorized Distributor

Click to View Pricing, Inventory, Delivery & Lifecycle Information:

[Honeywell:](#)

[25ET11](#)