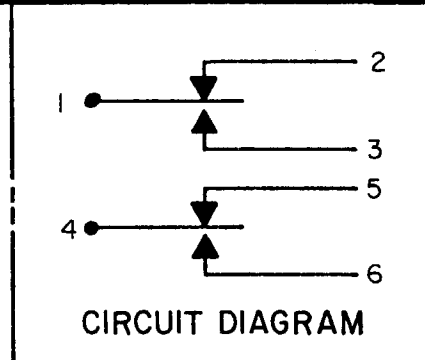
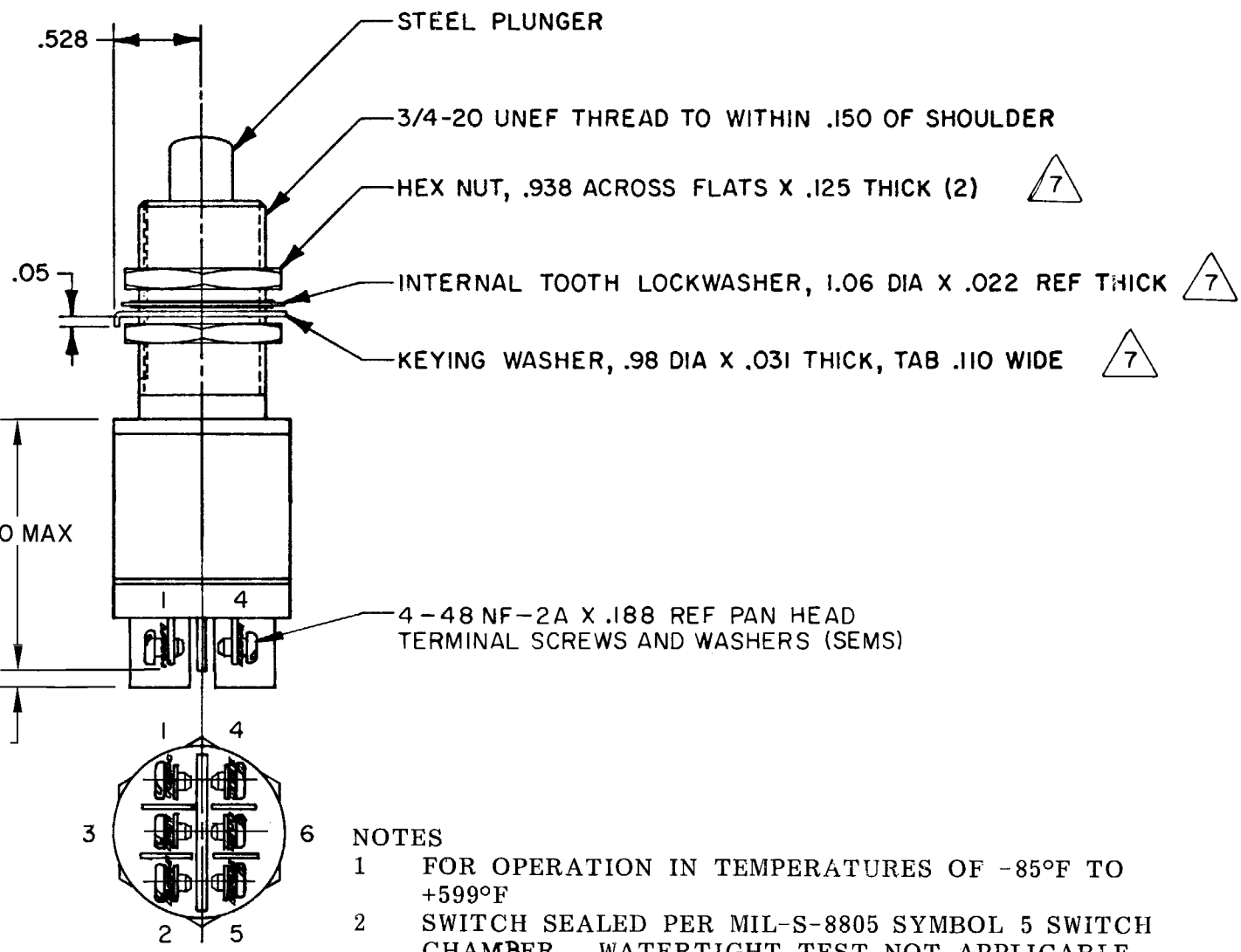
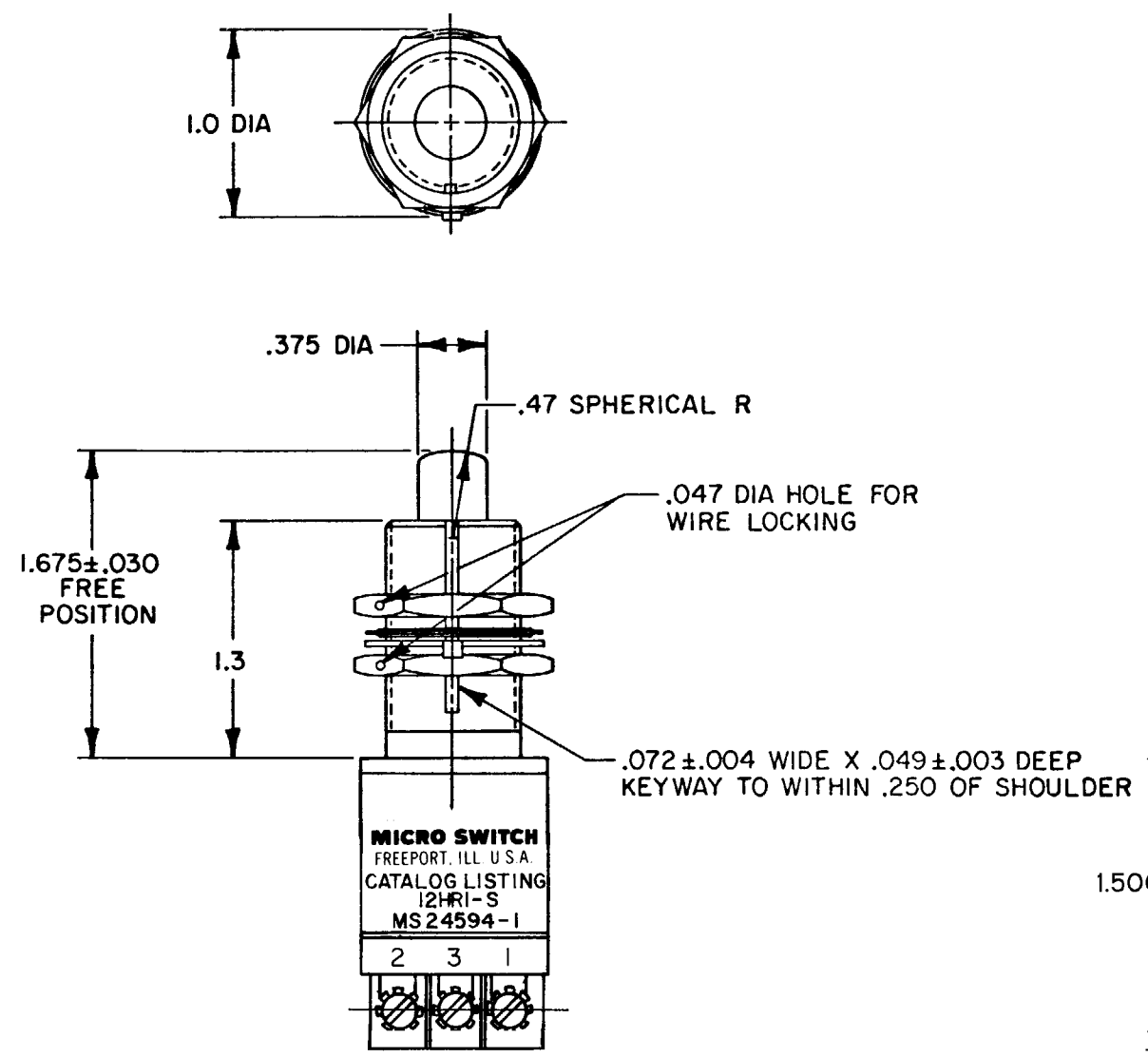


12HR1-S
PAGE 1 OF 1
M
DRAWING NUMBER
15
ISSUE
REVISIONS
A 47573
TSM
18 JULY 80
B C047277
J A P
5 JAN 81
C C093991
MPO
14 DEC 98
FORMTEK
FO-5255 1-B
DRAWN
TSM
18 JULY 80
CHECK
GALY
23 JULY 80
CHECK
JAF
14 DEC 98
CHECK
SR-7305
RELEASE NO.



- NOTES
- 1 FOR OPERATION IN TEMPERATURES OF -85°F TO +599°F
 - 2 SWITCH SEALED PER MIL-S-8805 SYMBOL 5 SWITCH CHAMBER. WATERTIGHT TEST NOT APPLICABLE
 - 3 TERMINAL IDENTIFICATION IS SHOWN ON SWITCH ABOVE TERMINALS
 - 4 COINCIDENCE OF OPERATING AND RELEASING POINTS .005 INCH OF PLUNGER TRAVEL
 - 5 ALL EXPOSED PARTS ARE OF CORROSION RESISTANT MATERIAL
 - 6 CIRCUIT DIAGRAM PERMANENTLY MARKED ON SWITCH HOUSING
 - 7 HARDWARE MAY BE PACKAGED UNASSEMBLED PER MIL-S-8805

THIS DRAWING COVERS A PROPRIETARY ITEM AND IS THE PROPERTY OF MICRO SWITCH, A DIVISION OF HONEYWELL. THIS DRAWING IS NOT TO BE COPIED OR USED WITHOUT THE APPROVAL OF MICRO SWITCH.		SCALE FULL	
DO NOT SCALE PRINT		TOLERANCES	
APPLY TO DESIGN UNITS. CONVERSIONS ARE ONLY FOR REFERENCE. UNLESS NOTED, TOLERANCES ARE ±		DIM. mm TOL. mm/in	
NO PLACES X X 1/04		DIM. in TOL. mm/in	
ONE PLACE X, X 0.4/010 X, X 0.8/05		TWO PLACES X, XX 0.15/006 X, XX 0.38/015	
THREE PLACES X, XXX 0.13/005		X, XXX 0.13/005	
ANGLES		X, XXX 0.13/005	
DESIGN UNITS		SI METRIC	
THIRD ANGLE PROJECTION		US CUSTOMARY	
WEIGHT		4 1/2 OZ MAX	

CHARACTERISTICS		ELECTRICAL DATA	
OPERATING FORCE ----- 6-12 LBS		CONTACT ARRANGEMENT	
FULL OVERTRAVEL FORCE ----- 35 LBS MAX		(2) S P D T	
RELEASE FORCE ----- 5 LBS MIN		28 VOLTS DC (EACH CIRCUIT)	
PRETRAVEL ----- .050 MAX		RESISTIVE 5 AMP	
DIFFERENTIAL TRAVEL ----- .015 MAX		INDUCTIVE 2 AMP	
OVERTRAVEL ----- .250 MIN			

Mouser Electronics

Authorized Distributor

Click to View Pricing, Inventory, Delivery & Lifecycle Information:

[Honeywell:](#)

[12HR1-S](#)