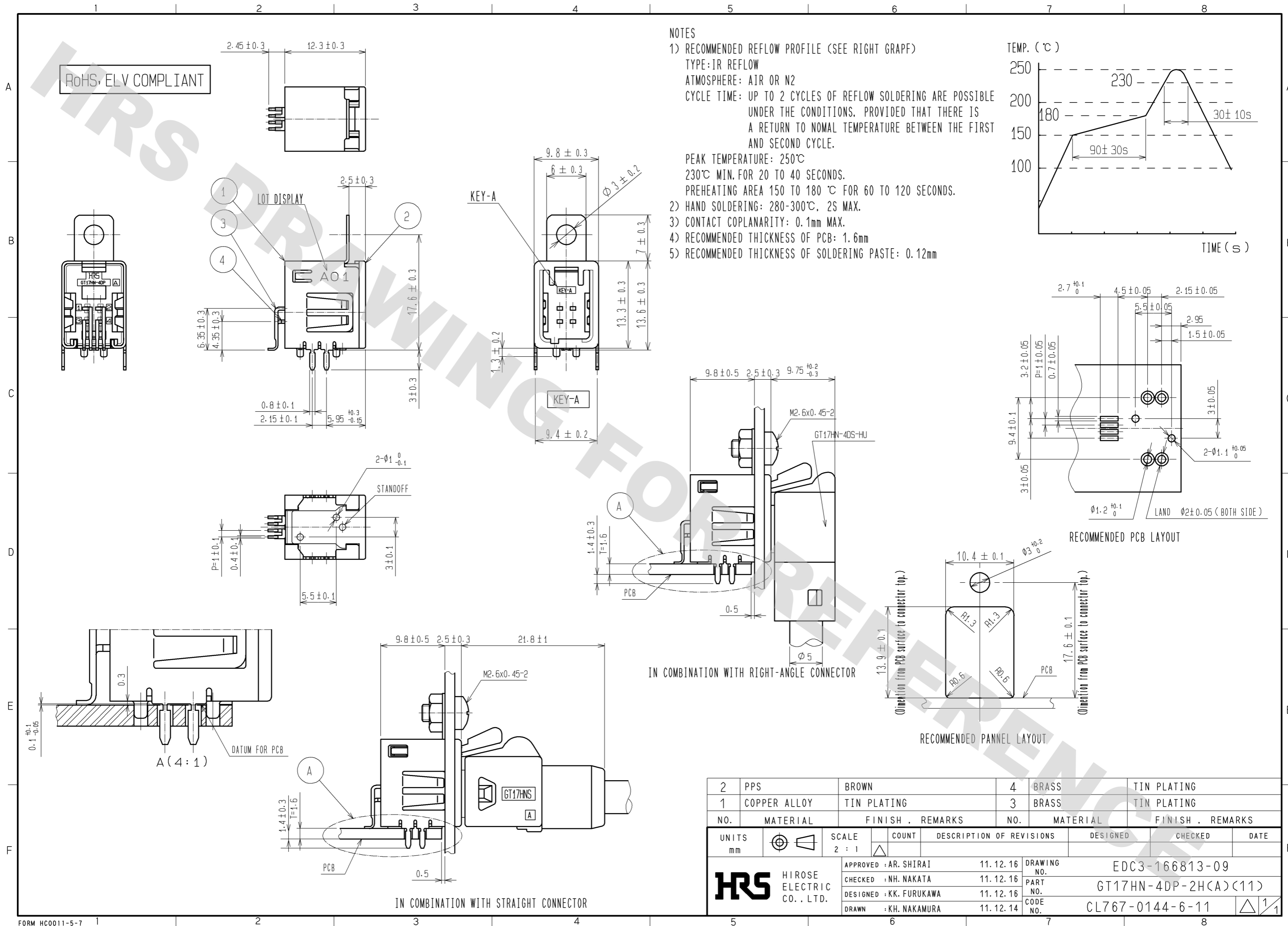
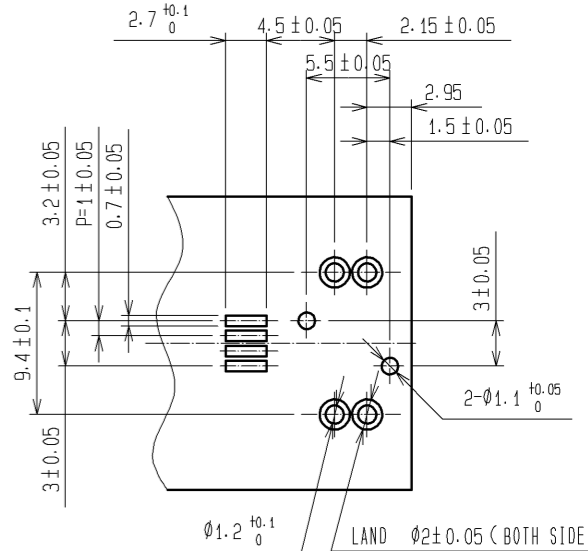
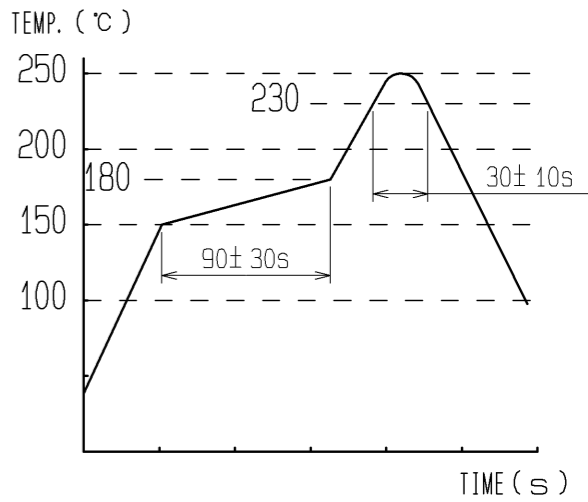


RoHS, ELV COMPLIANT

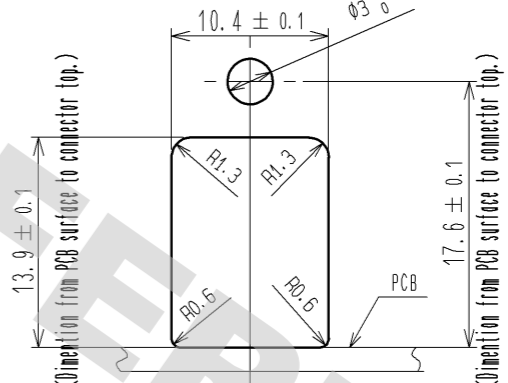


NOTES

- 1) RECOMMENDED REFLOW PROFILE (SEE RIGHT GRAPH)  
 TYPE: IR REFLOW  
 ATMOSPHERE: AIR OR N2  
 CYCLE TIME: UP TO 2 CYCLES OF REFLOW SOLDERING ARE POSSIBLE UNDER THE CONDITIONS, PROVIDED THAT THERE IS A RETURN TO NORMAL TEMPERATURE BETWEEN THE FIRST AND SECOND CYCLE.  
 PEAK TEMPERATURE: 250°C  
 230°C MIN. FOR 20 TO 40 SECONDS.  
 PREHEATING AREA 150 TO 180 °C FOR 60 TO 120 SECONDS.
- 2) HAND SOLDERING: 280-300°C, 2S MAX.
- 3) CONTACT COPLANARITY: 0.1mm MAX.
- 4) RECOMMENDED THICKNESS OF PCB: 1.6mm
- 5) RECOMMENDED THICKNESS OF SOLDERING PASTE: 0.12mm



RECOMMENDED PCB LAYOUT



RECOMMENDED PANNEL LAYOUT

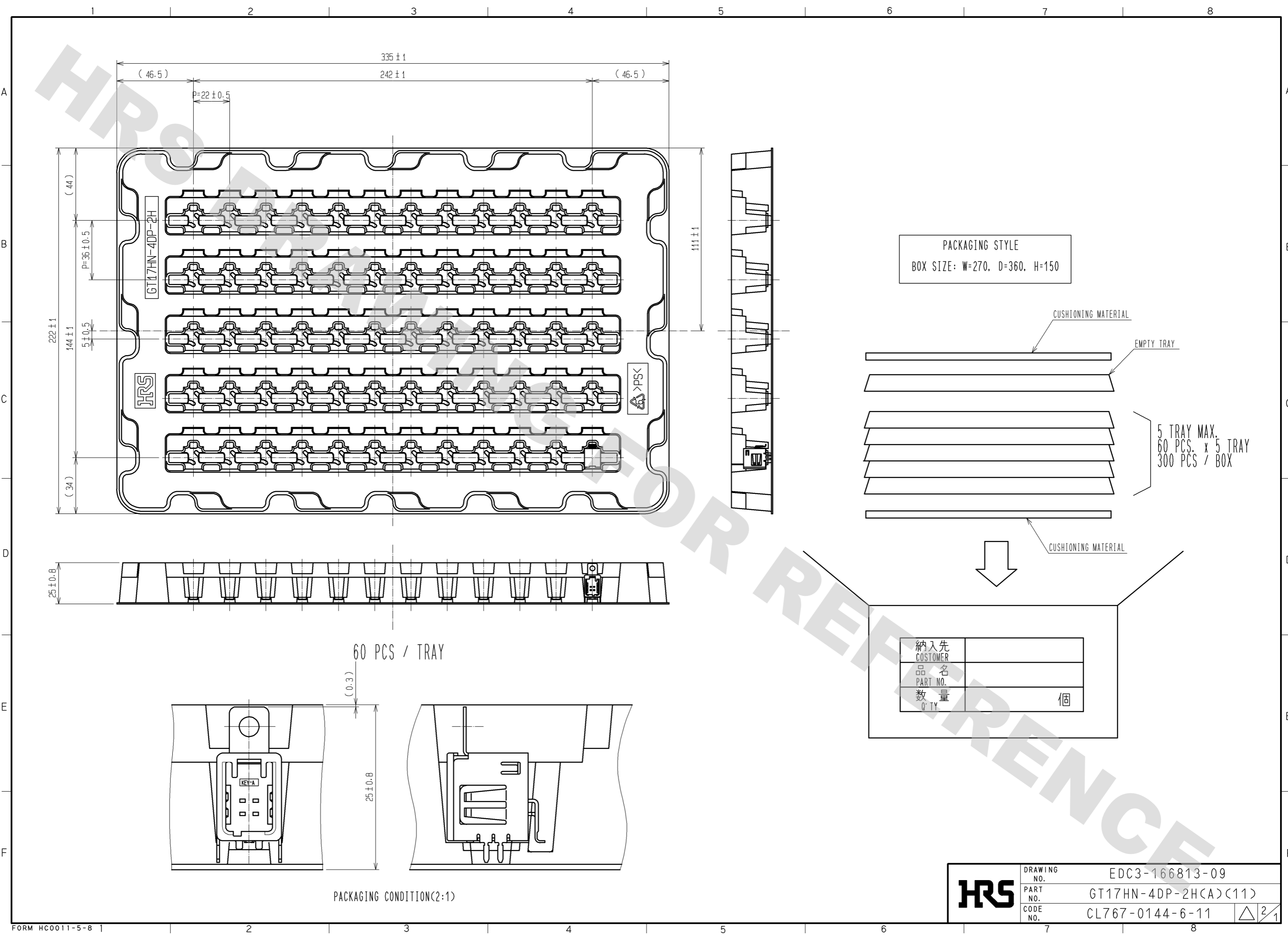
IN COMBINATION WITH RIGHT-ANGLE CONNECTOR

IN COMBINATION WITH STRAIGHT CONNECTOR

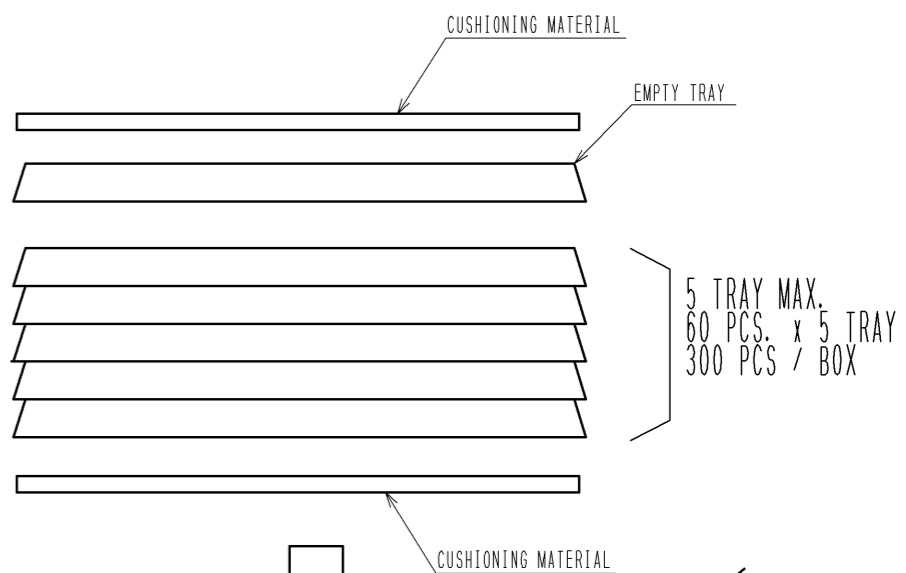
2	PPS	BROWN	4	BRASS	TIN PLATING		
1	COPPER ALLOY	TIN PLATING	3	BRASS	TIN PLATING		
NO.	MATERIAL	FINISH . REMARKS	NO.	MATERIAL	FINISH . REMARKS		
UNITS	mm	SCALE	COUNT	DESCRIPTION OF REVISIONS	DESIGNED	CHECKED	DATE
2 : 1				APPROVED : AR. SHIRAI	11. 12. 16		
				CHECKED : NH. NAKATA	11. 12. 16		
				DESIGNED : KK. FURUKAWA	11. 12. 16		
				DRAWN : KH. NAKAMURA	11. 12. 14		
DRAWING NO.				EDC3-166813-09			
PART NO.				GT17HN-4DP-2H(A)(11)			
CODE NO.				CL767-0144-6-11			

DRAWING FOR REFERENCE: This is subject to change without notice  
08/11/2012

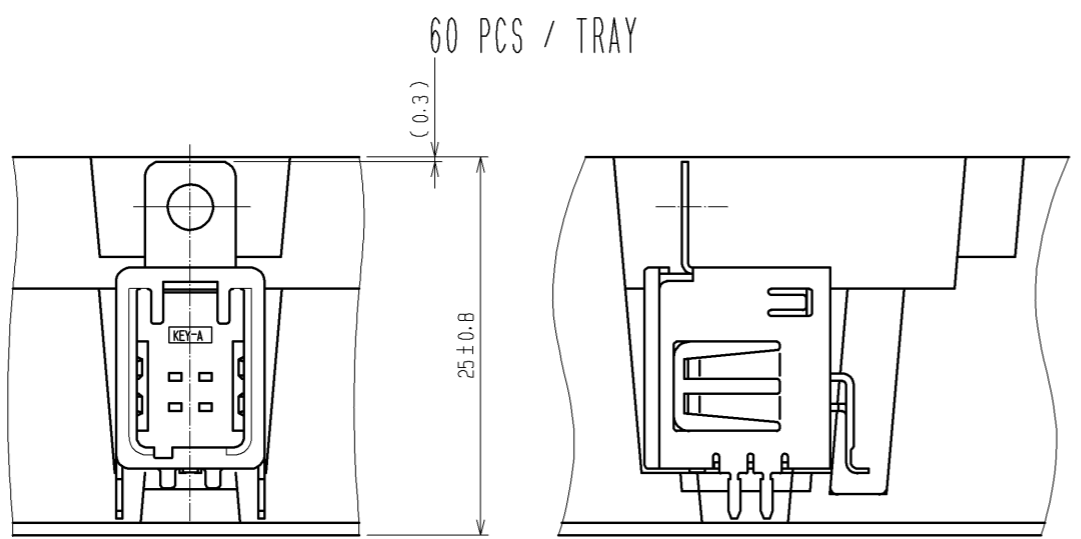
DRAWING FOR REFERENCE: This is subject to change without notice  
08/11/2012



PACKAGING STYLE  
BOX SIZE: W=270, D=360, H=150



納入先 CUSTOMER	
品名 PART NO.	
数量 QTY	個



<b>HRS</b>	DRAWING NO.	EDC3-166813-09
	PART NO.	GT17HN-4DP-2H(A)(11)
	CODE NO.	CL767-0144-6-11
		△ 2/1

# Mouser Electronics

Authorized Distributor

Click to View Pricing, Inventory, Delivery & Lifecycle Information:

[Hirose Electric:](#)

[GT17HN-4DP-2H\(A\)\(11\)](#)