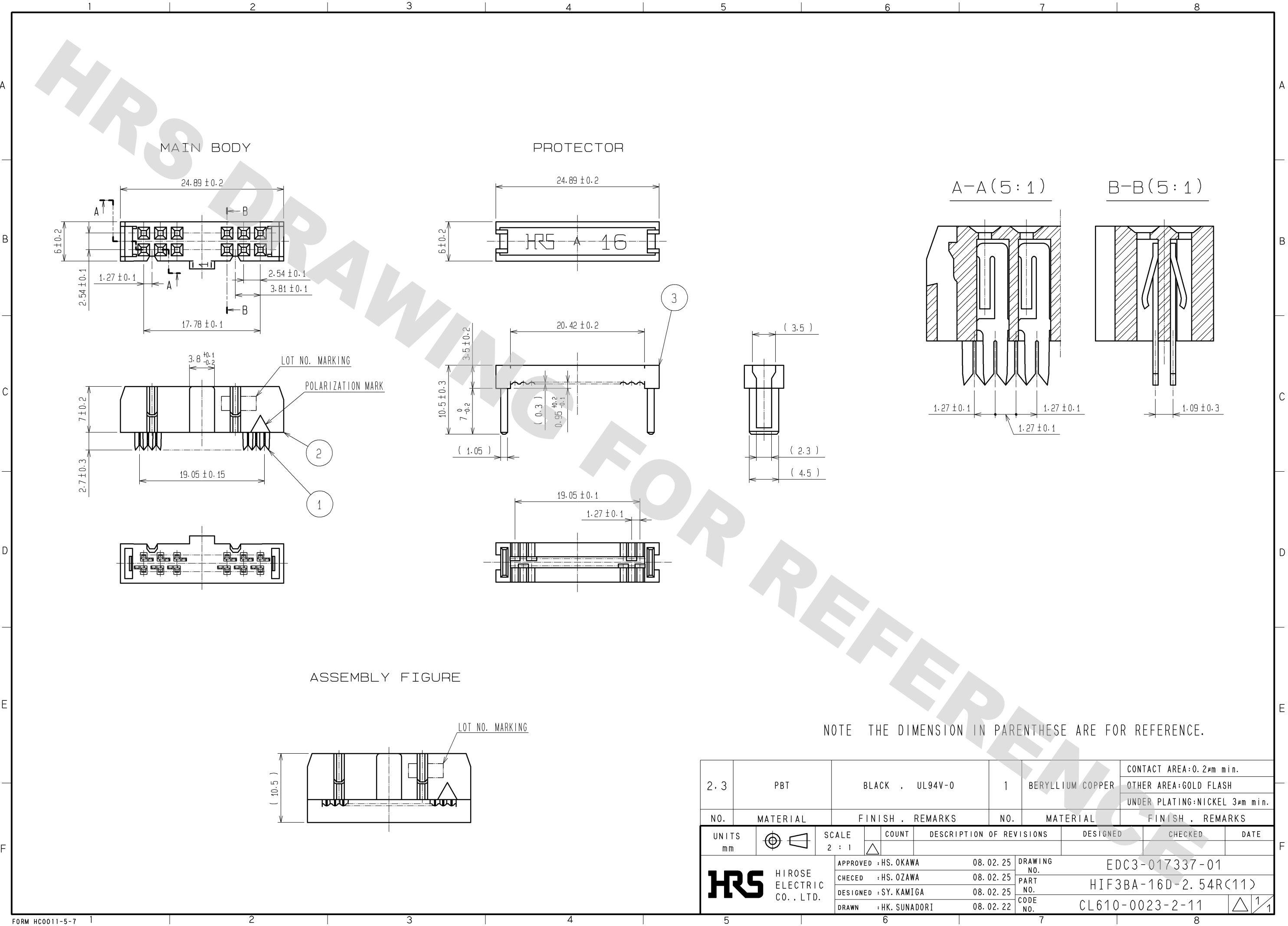


DRAWING FOR REFERENCE: This is subject to change without notice
08/11/2012



NOTE THE DIMENSION IN PARENTHESE ARE FOR REFERENCE.

| | | | | | | | |
|---|----------|------------------|------------|--|--|---------|------|
| 2.3 | PBT | BLACK . UL94V-0 | 1 | BERYLLIUM COPPER | CONTACT AREA: 0.2µm min. OTHER AREA: GOLD FLASH UNDER PLATING: NICKEL 3µm min. | | |
| NO. | MATERIAL | FINISH . REMARKS | NO. | MATERIAL | FINISH . REMARKS | | |
| UNITS mm | | SCALE 2 : 1 | COUNT △ | DESCRIPTION OF REVISIONS | DESIGNED | CHECKED | DATE |
| HRS HIROSE ELECTRIC CO., LTD. APPROVED : HS. OKAWA 08.02.25 CHECED : HS. OZAWA 08.02.25 DESIGNED : SY. KAMIGA 08.02.25 DRAWN : HK. SUNADORI 08.02.22 | | | | DRAWING NO. EDC3-017337-01 PART NO. HIF3BA-16D-2.54R(11) CODE NO. CL610-0023-2-11 | △ 1/1 | | |

Mouser Electronics

Authorized Distributor

Click to View Pricing, Inventory, Delivery & Lifecycle Information:

[Hirose Electric:](#)

[HIF3BA-16D-2.54R\(11\)](#)