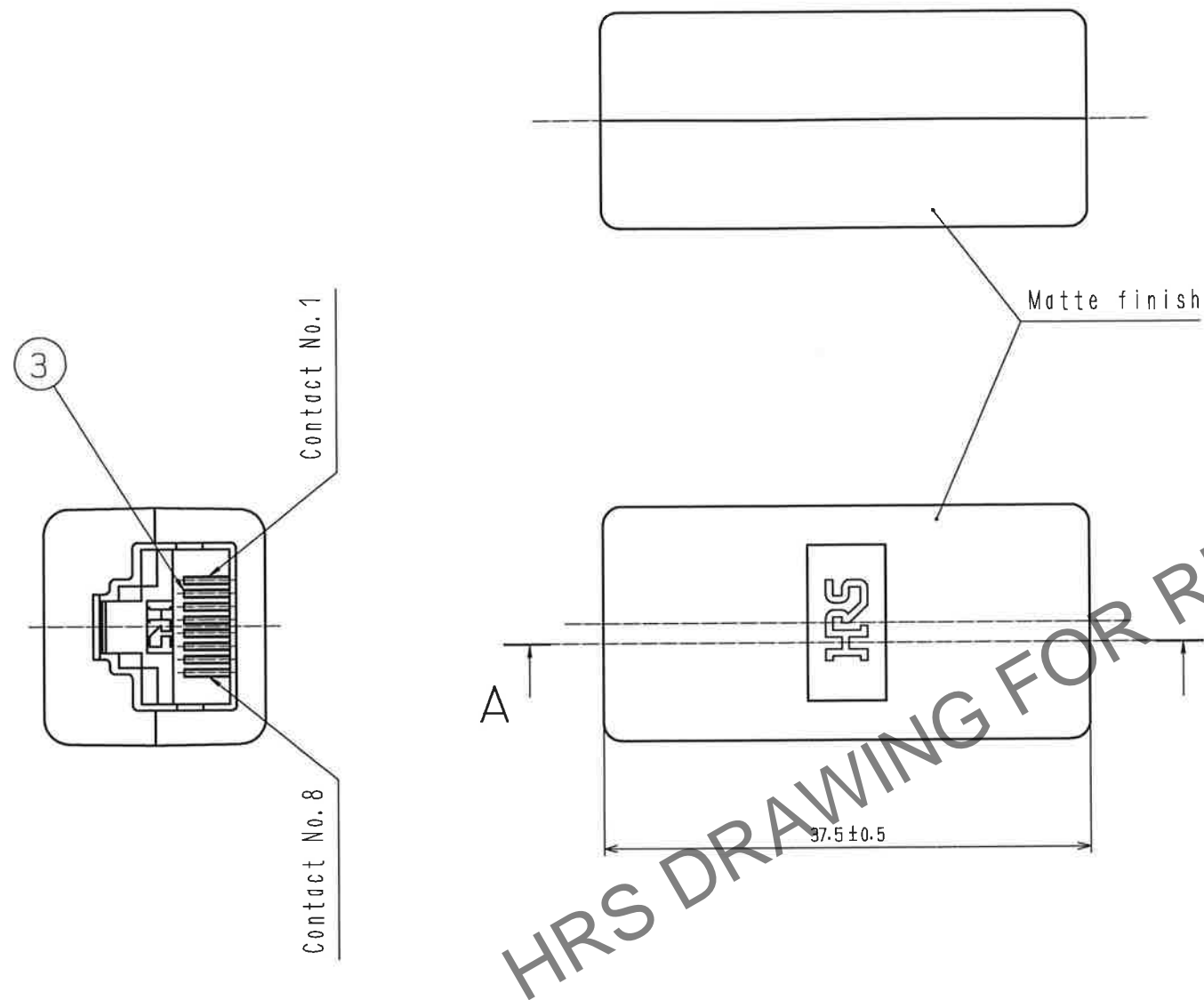


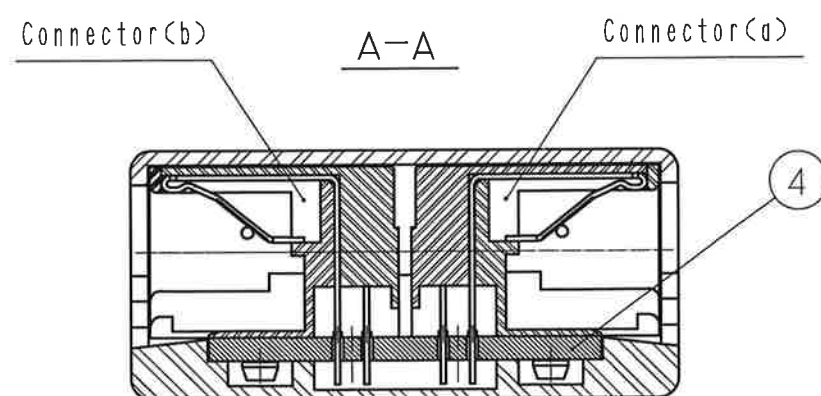
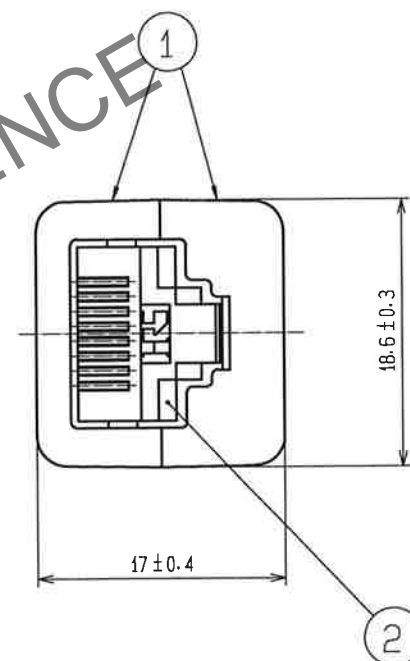
Jul.1.2024 Copyright 2024 HIROSE ELECTRIC CO., LTD. All Rights Reserved.
In case of consideration for using Automotive equipment / device which demand high reliability, kindly contact our sales window correspondents.



1 Table-1

Connector (a) TM5RL-88	1	2	3	4	5	6	7	8
Connector (b) TM5RL-88	1	2	3	4	5	6	7	8

Note 1 Assembly procedure of the connector included into the cover case is based on Table-1.



2	PBT	UL94V-0 (BLACK)	4	GLASS FABRIC BASED EPOXY	
1	POLYCARBONATE	UL94V-0 (GRAY)	3	PHOSPHOR BRONZE	SELECTIVE GOLD PLATING 1.27μm
NO.	MATERIAL	FINISH . REMARKS	NO.	MATERIAL	FINISH . REMARKS
UNITS mm		SCALE 2 : 1	COUNT 	DESCRIPTION OF REVISIONS	DESIGNED CHECKED DATE
HIROSE ELECTRIC CO., LTD.		APPROVED : <i>HN. KENJO</i> 2020.11.20	DRAWING NO. EDC-047624-40-00		
		CHECKED : <i>TD. TANIGUCHI</i> 2020.11.20	PART NO. TM5RL-88-JJ(40)		
		DESIGNED : <i>HY. MATSUDA</i> 2020.11.20	CODE NO. CL0222-3798-7-40		
		DRAWN : <i>HY. MATSUDA</i> 2020.11.20			

Mouser Electronics

Authorized Distributor

Click to View Pricing, Inventory, Delivery & Lifecycle Information:

[Hirose Electric:](#)

[HT802/MT50B-1822S](#)