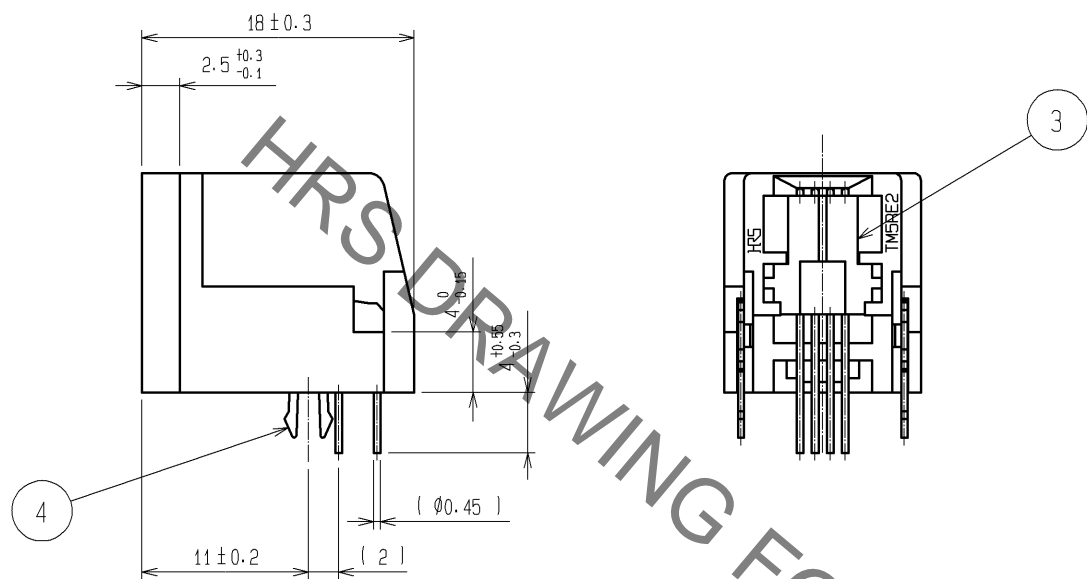
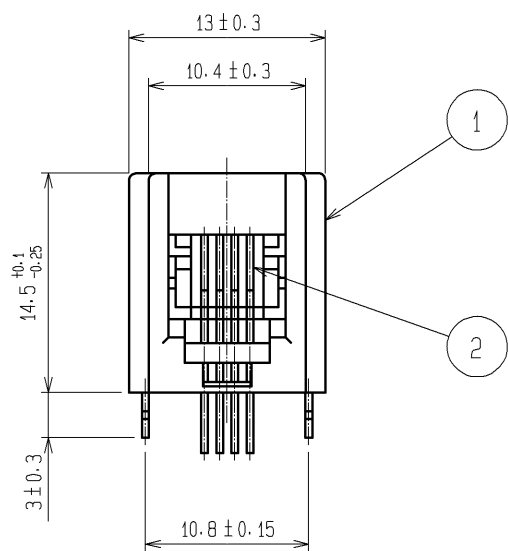
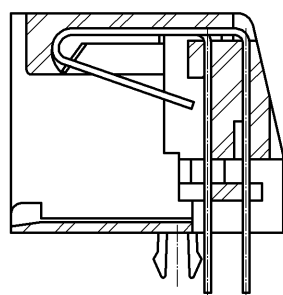
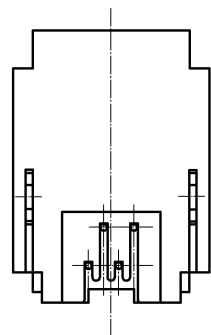


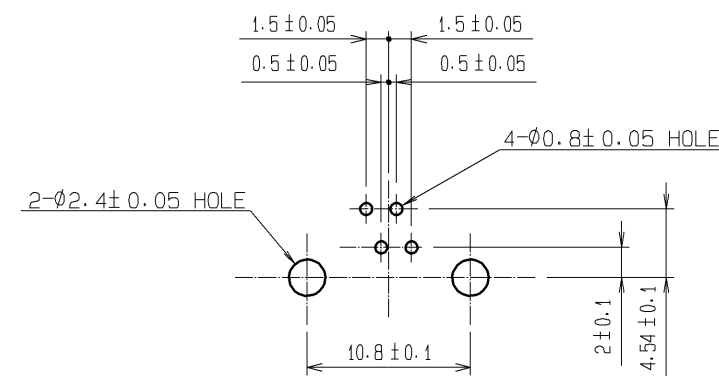
Jan.1.2022 Copyright 2022 HIROSE ELECTRIC CO., LTD. All Rights Reserved.
In case of consideration for using Automotive equipment / device which demand high reliability, kindly contact our sales window correspondents.



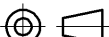




CONTACT MOUNTING DRAW



RECOMMENDED PC BOARD PATTERN



NOTES 1 INDICATES THE DIMENSIONS ON THE CONNECTOR MOUNTING SURFACE OF THE PCB.
2 PC BOARD THICKNESS: TO BE 1.6 mm THICK.

2	PHOSPHOR BRONZE	CONTACT AREA GOLD 1.27#m min LEAD AREA GOLD 0.03#m min UNDER PLATING NICKEL 1.27#m min		4	PHOSPHOR BRONZE	TIN PLATING 1#m min			
1	PBT	UL94V-0 (DARK GRAY)		3	PBT	UL94V-0 (BLACK)			
NO.	MATERIAL	FINISH , REMARKS		NO.	MATERIAL	FINISH , REMARKS			
UNITS mm		SCALE 2 : 1		COUNT	DESCRIPTION OF REVISIONS		DESIGNED	CHECKED	DATE
 HIROSE ELECTRIC CO., LTD.		APPROVED :HO. MIWA		07. 09. 20	DRAWING NO. EDC3-023802-03				
		CHECED :HO. MIWA		07. 09. 20	PART NO. TM5RE2-44 (20)				
		DESIGNED :TS. ITO		07. 09. 20	CODE NO. CL222-1222-1-20				
		DRAWN :YK. SATO		07. 09. 19	 				

Mouser Electronics

Authorized Distributor

Click to View Pricing, Inventory, Delivery & Lifecycle Information:

[Hirose Electric:](#)

[TM5RE2-44\(20\)](#)