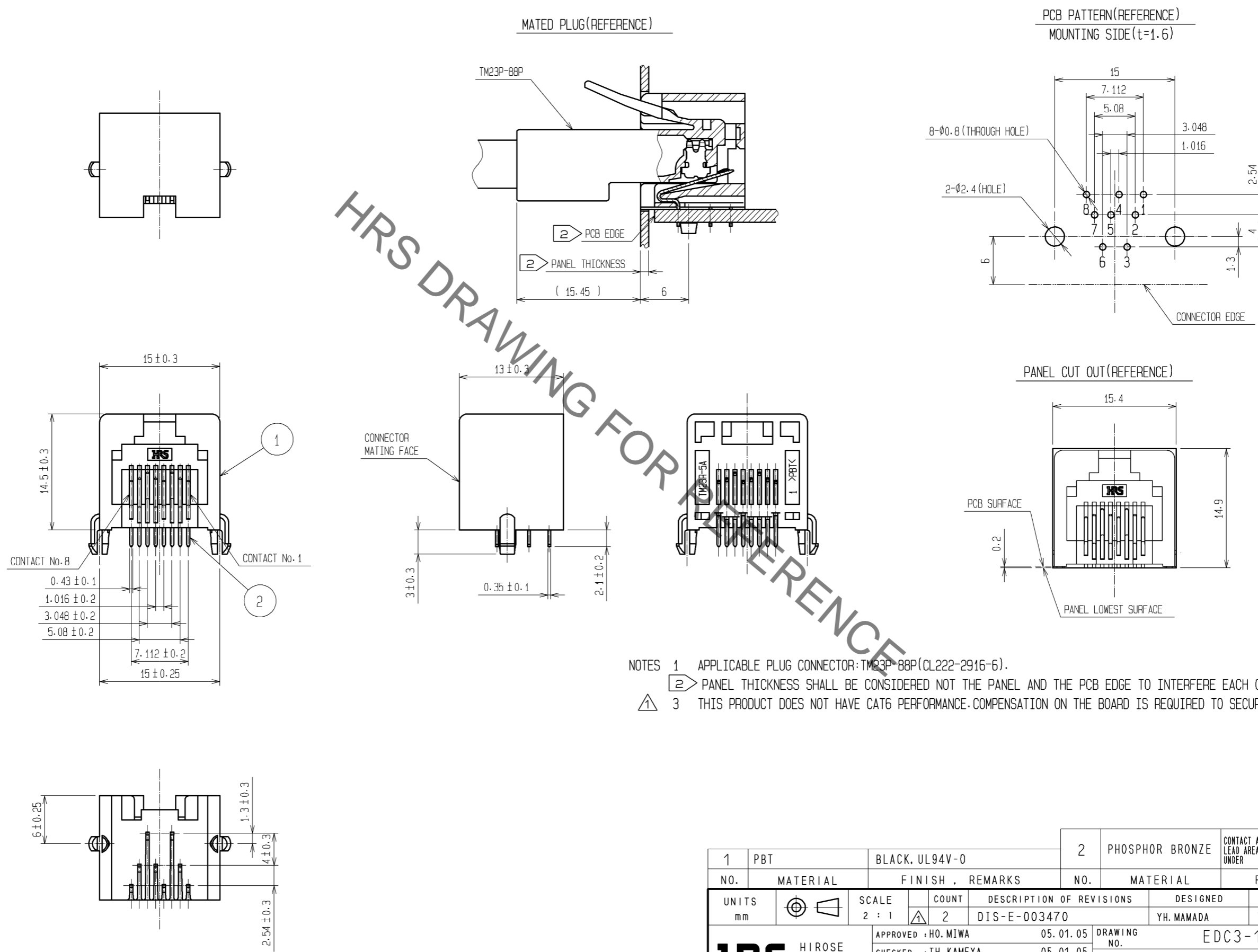


Sep.1.2021 Copyright 2021 HIROSE ELECTRIC CO., LTD. All Rights Reserved.
In case of consideration for using Automotive equipment / device which demand high reliability, kindly contact our sales window correspondents.



NOTES 1 APPLICABLE PLUG CONNECTOR: TM23P-88P(CL222-2916-6).
 2 PANEL THICKNESS SHALL BE CONSIDERED NOT THE PANEL AND THE PCB EDGE TO INTERFERE EACH OTHER.
 3 THIS PRODUCT DOES NOT HAVE CAT6 PERFORMANCE. COMPENSATION ON THE BOARD IS REQUIRED TO SECURE CAT6 PERFORMANCE

1	PBT	BLACK, UL94V-0	2	PHOSPHOR BRONZE	CONTACT AREA : GOLD PLATING 1.27 μm min LEAD AREA : GOLD PLATING 0.03 μm min UNDER : NICKEL PLATING 1.27 μm min
NO.	MATERIAL	FINISH . REMARKS	NO.	MATERIAL	FINISH . REMARKS
UNITS mm		SCALE 2 : 1	COUNT 2	DESCRIPTION OF REVISIONS DIS-E-003470	DESIGNED YH. MAMADA
HRS HIROSE ELECTRIC CO., LTD.		APPROVED : HO. MIWA	05.01.05	DRAWING NO. EDC3-124001-02	CHECKED YH. ENAMI
		CHECKED : TH. KAMEYA	05.01.05	PART NO. TM23R-5A-88(50)	DATE 10.10.15
		DESIGNED : SS. SATOH	05.01.05	CODE NO. CL222-2918-1-50	
		DRAWN : SS. SATOH	05.01.05		

Mouser Electronics

Authorized Distributor

Click to View Pricing, Inventory, Delivery & Lifecycle Information:

[Hirose Electric:](#)

[TM23R-5A-88\(50\)](#)