

Sep.1.2021 Copyright 2021 HIROSE ELECTRIC CO., LTD. All Rights Reserved.
In case of consideration for using Automotive equipment / device which demand high reliability, kindly contact our sales window correspondents.

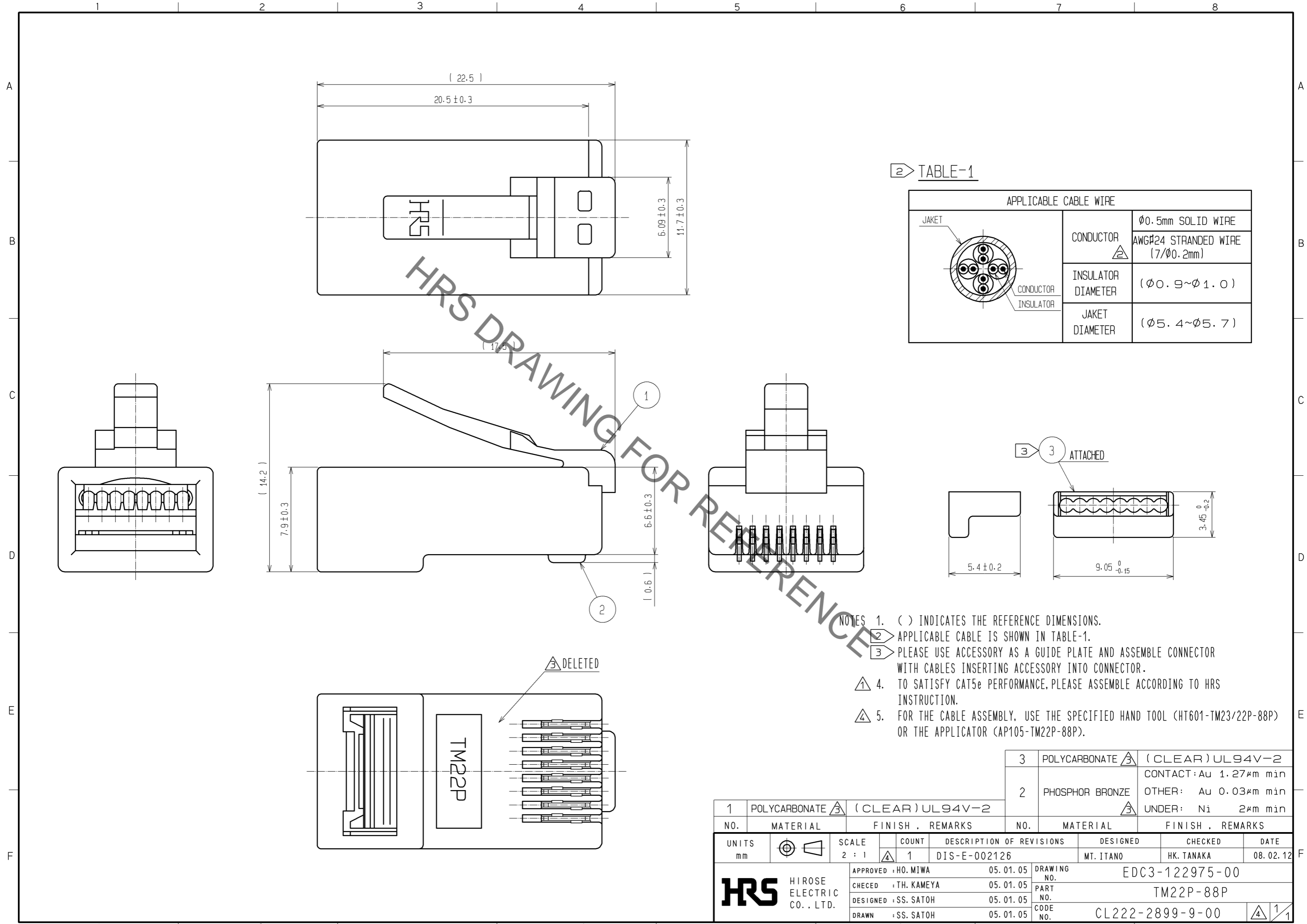
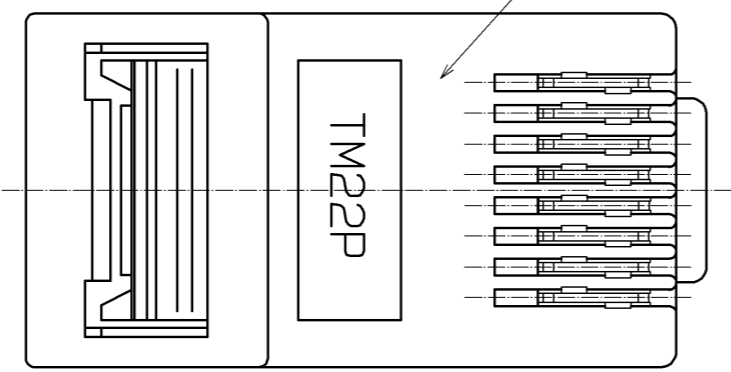


TABLE-1

APPLICABLE CABLE WIRE		
	CONDUCTOR	φ0.5mm SOLID WIRE
		AWG#24 STRANDED WIRE (7/φ0.2mm)
	INSULATOR DIAMETER	(φ0.9~φ1.0)
	JAKET DIAMETER	(φ5.4~φ5.7)

- NOTES
- () INDICATES THE REFERENCE DIMENSIONS.
 - APPLICABLE CABLE IS SHOWN IN TABLE-1.
 - PLEASE USE ACCESSORY AS A GUIDE PLATE AND ASSEMBLE CONNECTOR WITH CABLES INSERTING ACCESSORY INTO CONNECTOR.
 - TO SATISFY CAT5e PERFORMANCE, PLEASE ASSEMBLE ACCORDING TO HRS INSTRUCTION.
 - FOR THE CABLE ASSEMBLY, USE THE SPECIFIED HAND TOOL (HT601-TM23/22P-88P) OR THE APPLICATOR (AP105-TM22P-88P).



NO.	MATERIAL	FINISH	REMARKS	NO.	MATERIAL	FINISH	REMARKS
1	POLYCARBONATE	(CLEAR)	UL94V-2	3	POLYCARBONATE	(CLEAR)	UL94V-2
				2	PHOSPHOR BRONZE		CONTACT: Au 1.27μm min OTHER: Au 0.03μm min UNDER: Ni 2μm min

UNITS	SCALE	COUNT	DESCRIPTION OF REVISIONS	DESIGNED	CHECKED	DATE
mm	2 : 1	1	DIS-E-002126	MT. ITANO	HK. TANAKA	08.02.12

APPROVED	: HO. MIWA	05.01.05	DRAWING NO.	EDC3-122975-00
CHECKED	: TH. KAMEYA	05.01.05	PART NO.	TM22P-88P
DESIGNED	: SS. SATOH	05.01.05	CODE NO.	CL222-2899-9-00
DRAWN	: SS. SATOH	05.01.05		

Mouser Electronics

Authorized Distributor

Click to View Pricing, Inventory, Delivery & Lifecycle Information:

[Hirose Electric:](#)

[TM22P-88P](#)