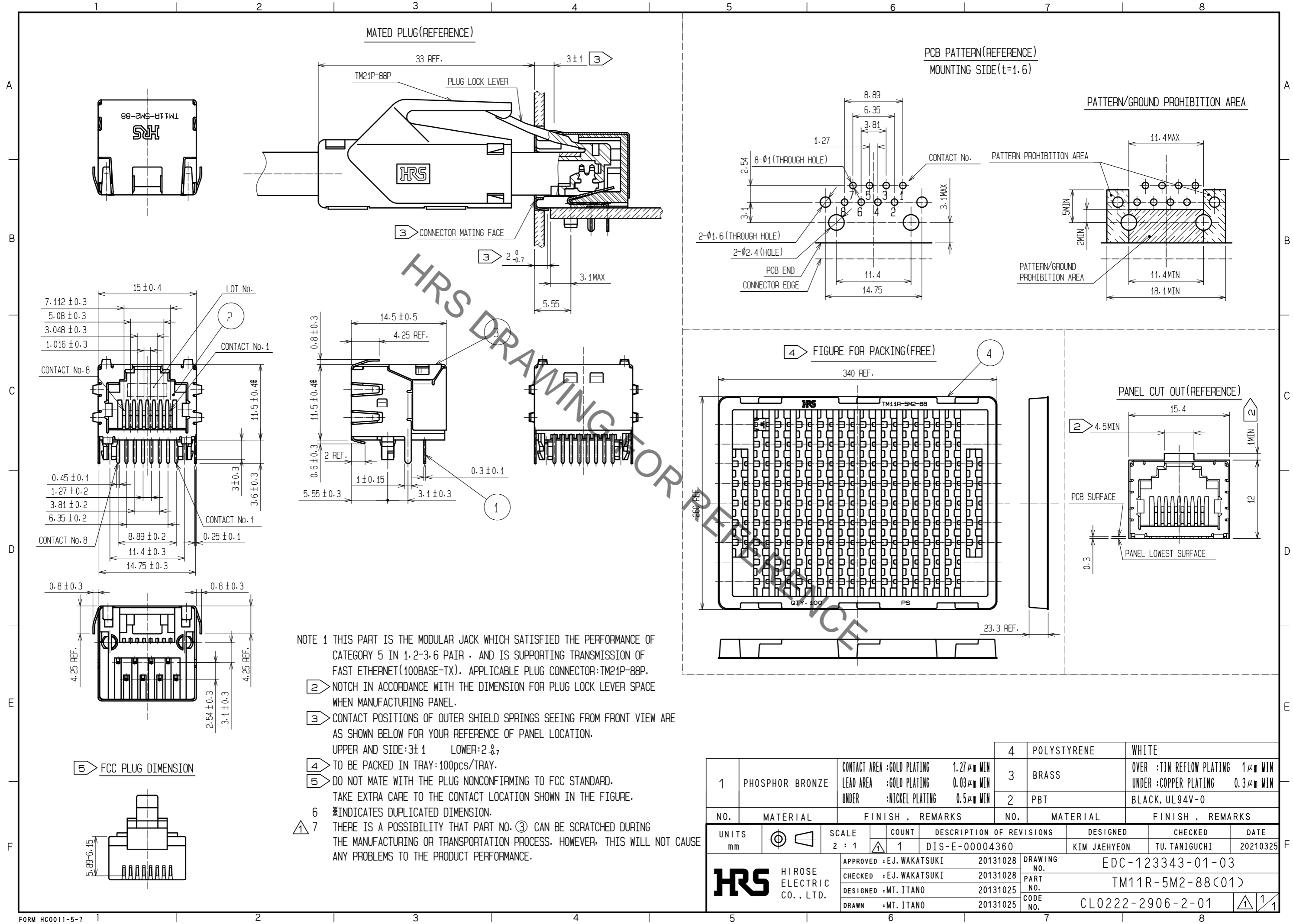


Sep.1.2021 Copyright 2021 HIROSE ELECTRIC CO., LTD. All Rights Reserved.
In case of consideration for using Automotive equipment / device which demand high reliability, kindly contact our sales window correspondents.



- NOTE 1 THIS PART IS THE MODULAR JACK WHICH SATISFIED THE PERFORMANCE OF CATEGORY 5 IN 1,2-3,6 PAIR , AND IS SUPPORTING TRANSMISSION OF FAST ETHERNET(100BASE-TX). APPLICABLE PLUG CONNECTOR:TM21P-88P.
- ② NOTCH IN ACCORDANCE WITH THE DIMENSION FOR PLUG LOCK LEVER SPACE WHEN MANUFACTURING PANEL.
- ③ CONTACT POSITIONS OF OUTER SHIELD SPRINGS SEEING FROM FRONT VIEW ARE AS SHOWN BELOW FOR YOUR REFERENCE OF PANEL LOCATION.
UPPER AND SIDE:3±1 LOWER:2±1
- ④ TO BE PACKED IN TRAY:100PCS/TRAY.
- ⑤ DO NOT MATE WITH THE PLUG NONCONFIRMING TO FCC STANDARD.
TAKE EXTRA CARE TO THE CONTACT LOCATION SHOWN IN THE FIGURE.
- 6 *INDICATES DUPLICATED DIMENSION.
- △ 7 THERE IS A POSSIBILITY THAT PART NO. ③ CAN BE SCRATCHED DURING THE MANUFACTURING OR TRANSPORTATION PROCESS. HOWEVER, THIS WILL NOT CAUSE ANY PROBLEMS TO THE PRODUCT PERFORMANCE.

1	PHOSPHOR BRONZE	CONTACT AREA :GOLD PLATING 1.27μm MIN LEAD AREA :GOLD PLATING 0.03μm MIN UNDER :NICKEL PLATING 0.5μm MIN	4	POLYSTYRENE	WHITE
3	BRASS		2	PBT	BLACK, UL94V-0
NO.	MATERIAL	FINISH . REMARKS	NO.	MATERIAL	FINISH . REMARKS
UNITS mm		SCALE 2 : 1	COUNT 1	DESCRIPTION OF REVISIONS DESIGNED CHECKED DATE	
HRS HIROSE ELECTRIC CO., LTD.		APPROVED :EJ. WAKATSUKI 20131028	DRAWING NO. EDC-123343-01-03		
		CHECKED :EJ. WAKATSUKI 20131028	PART NO. TM11R-5M2-88(01)		
		DESIGNED :MT. ITANO 20131025	CODE NO. CL0222-2906-2-01		
		DRAWN :MT. ITANO 20131025	1/1		

Mouser Electronics

Authorized Distributor

Click to View Pricing, Inventory, Delivery & Lifecycle Information:

[Hirose Electric:](#)

[TM11R-5M2-88\(01\)](#)