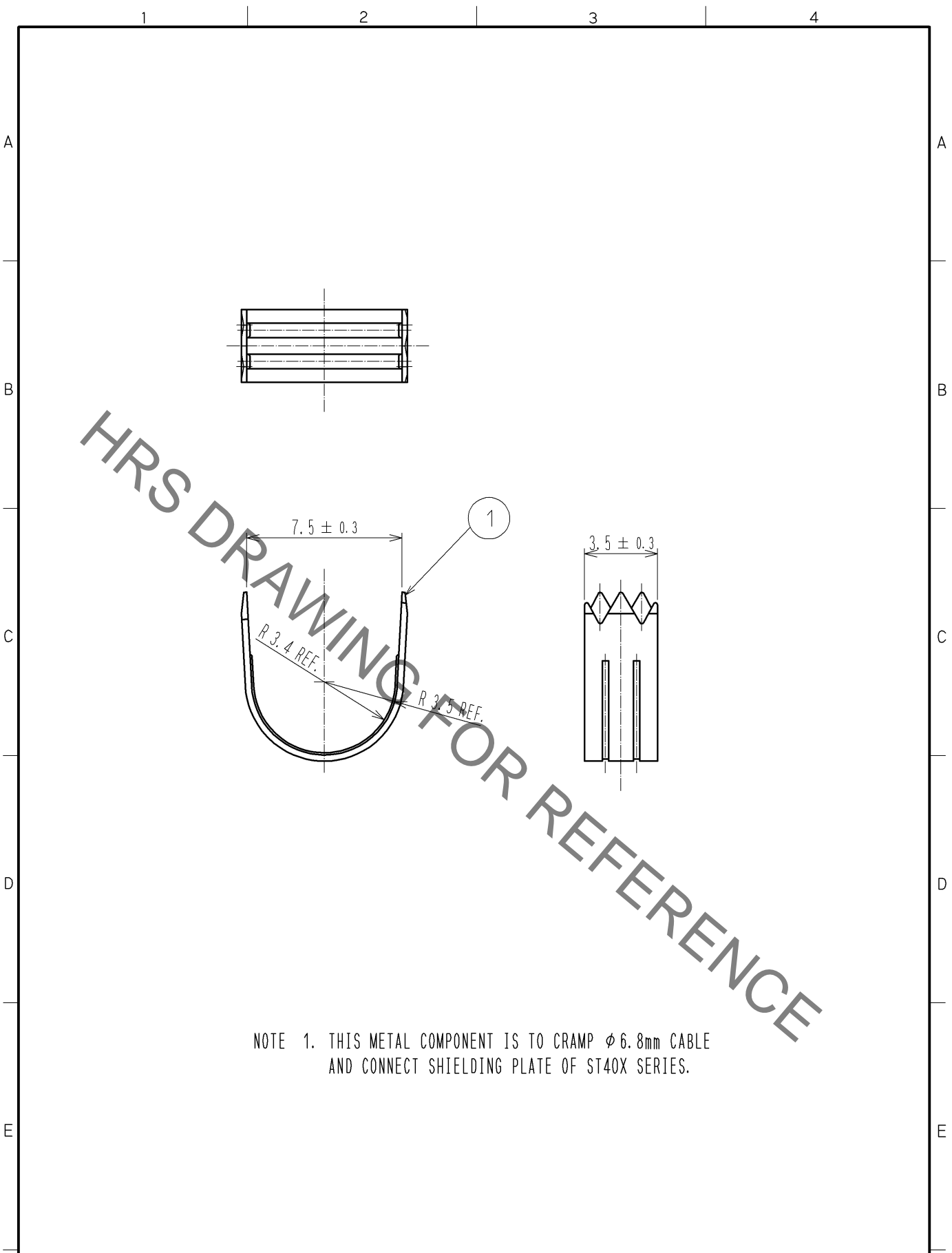


Jan.1.2022 Copyright 2022 HIROSE ELECTRIC CO., LTD. All Rights Reserved.  
 In case of consideration for using Automotive equipment / device which demand high reliability, kindly contact our sales window correspondents.



NOTE 1. THIS METAL COMPONENT IS TO CRAMP  $\phi 6.8\text{mm}$  CABLE  
 AND CONNECT SHIELDING PLATE OF ST40X SERIES.

1	COPPER ALLOY	t=0.3						
NO.	MATERIAL	FINISH	REMARKS	NO.	MATERIAL	FINISH	REMARKS	
UNITS mm		SCALE 4 : 1	COUNT 	DESCRIPTION OF REVISIONS		DESIGNED	CHECKED	DATE
HIROSE ELECTRIC CO., LTD.	APPROVED	: NF. MIYAZAKI	09.06.22	DRAWING NO.		EDC4-125546-00		
	CHECKED	: NF. MIYAZAKI	09.06.22	PART NO.		ST40X-CM(6.8)		
	DESIGNED	: TA. TORIHARA	09.06.22	CODE NO.		CL241-0050-0-00		
	DRAWN	: TA. TORIHARA	09.06.22			1/1		

# Mouser Electronics

Authorized Distributor

Click to View Pricing, Inventory, Delivery & Lifecycle Information:

[Hirose Electric:](#)

[ST40X-CM\(6.8\)](#)