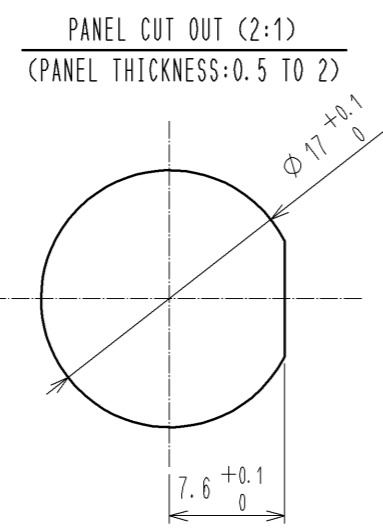
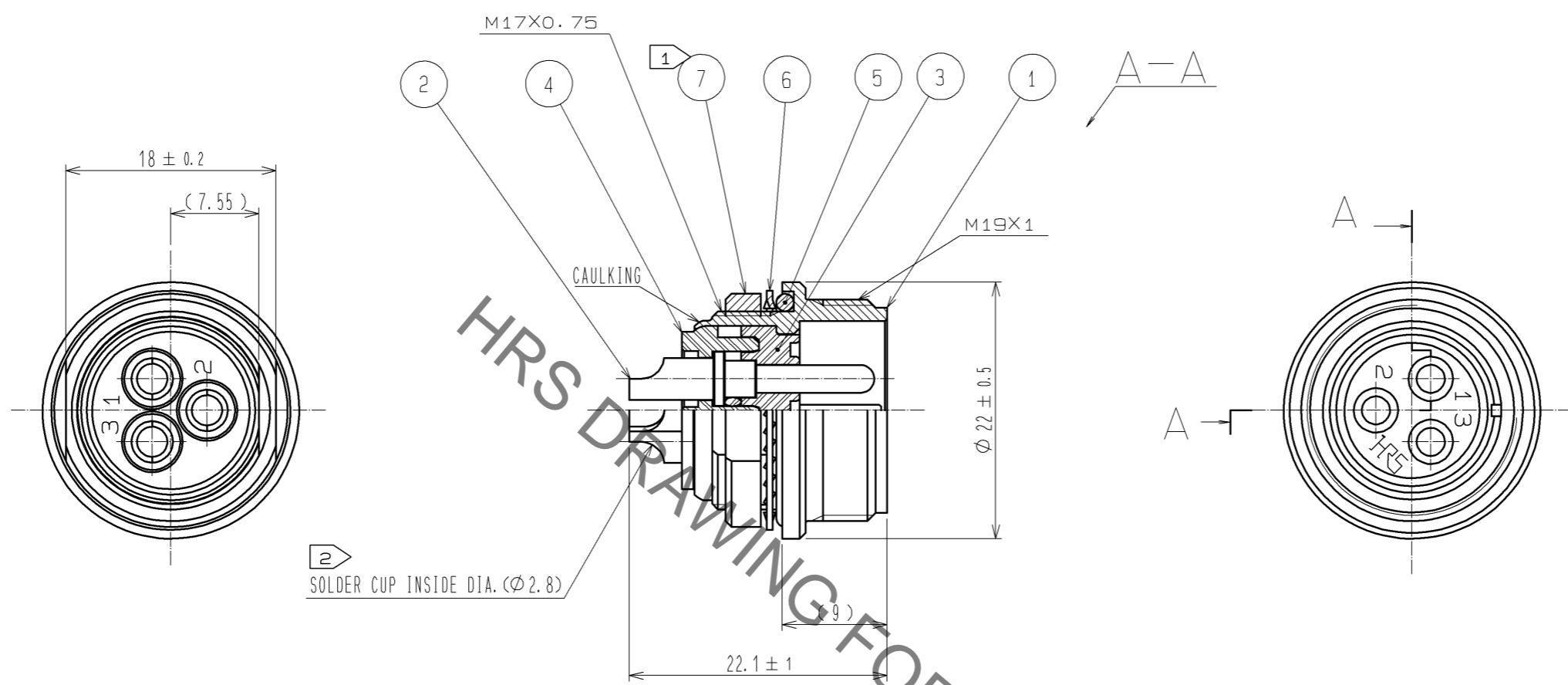


Sep.1.2021 Copyright 2021 HIROSE ELECTRIC CO., LTD. All Rights Reserved.  
In case of consideration for using Automotive equipment / device which demand high reliability, kindly contact our sales window correspondents.



NOTES

- ① THE RECOMMENDED TIGHTENING TORQUE OF REF. NO. ⑦ : 3N · m.  
LOCTITE 243, HENKEL JAPAN OR EQUIVALENT IS RECOMMENDED TO PREVENT REF. NO. ⑦ FROM LOOSENING.
- ② THE DIRECTION OF SOLDER CUP REF. NO. ② IS AN EXAMPLE.
- ③ WHEN MOUNTING THIS CONNECTOR ON THE PANEL, BE CAREFUL REF. NO. ⑤ IS ASSEMBLED SURELY INTO THE GROOVE OF REF. NO. ① AS SHOWN IN THIS FIGURE TO KEEP WATERPROOF EFFECTIVENESS.

NO.	MATERIAL	FINISH	REMARKS	NO.	MATERIAL	FINISH	REMARKS
4	DIALLYL PHTHALATE	(BLACK)	UL94V-0				
3	DIALLYL PHTHALATE	(BLACK)	UL94V-0	7	BRASS		NICKEL PLATING
2	BRASS	SILVER PLATING	3μm min.	6	PHOSPHOR BRONZE		NICKEL PLATING
1	ZINC ALLOY	CROMATE PLATING		5	SILICONE RUBBER		(BLACK)

UNITS	SCALE	COUNT	DESCRIPTION OF REVISIONS	DESIGNED	CHECKED	DATE
mm	2 : 1	△				
APPROVED : EJ. KUNII			12.11.28	DRAWING NO. EDC3-110768-71		
CHECKED : HY. KISHI			12.11.27	PART NO. RM15WTRZ-3P(71)		
DESIGNED : HS. NAGANO			12.11.27	CODE NO. CL109-1632-5-71		
DRAWN : HS. NAGANO			12.11.27	△ 1/1		

# Mouser Electronics

Authorized Distributor

Click to View Pricing, Inventory, Delivery & Lifecycle Information:

[Hirose Electric:](#)

[RM15WTRZ-3P\(71\)](#)