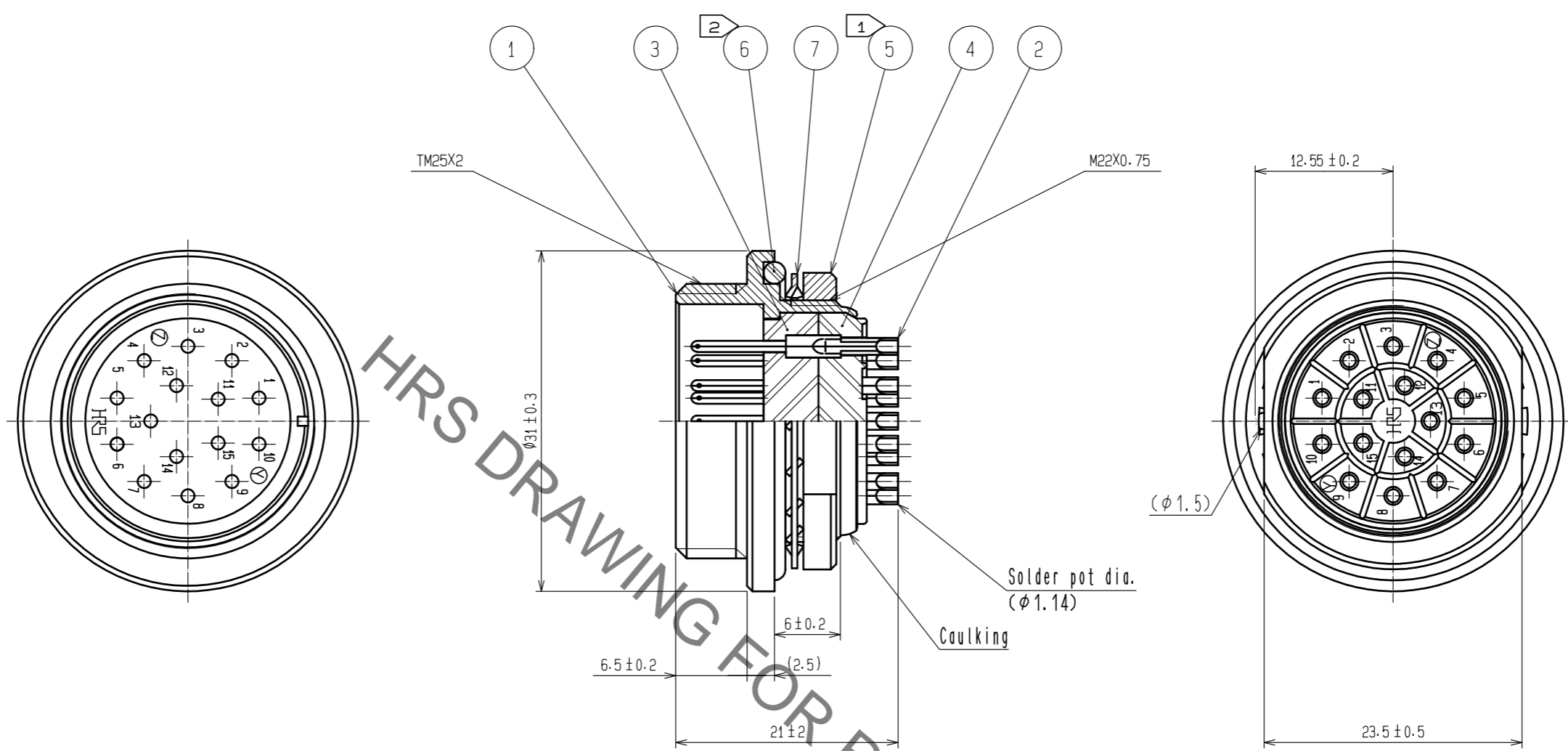
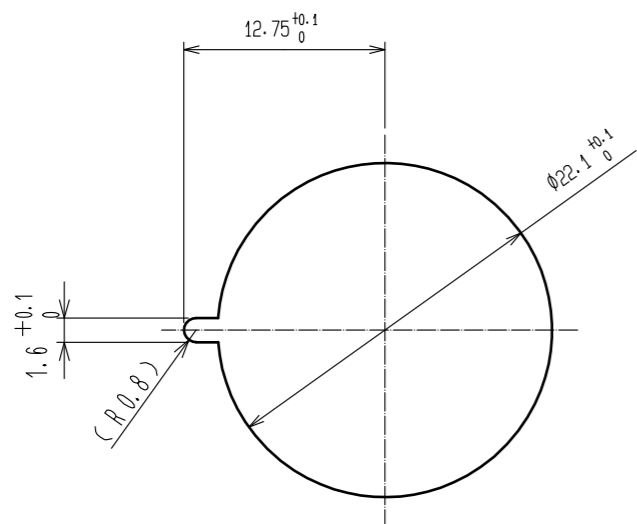


Jan.1.2021 Copyright 2021 HIROSE ELECTRIC CO., LTD. All Rights Reserved.
In case of consideration for using Automotive equipment / device which demand high reliability, kindly contact our sales window correspondents.



Panel cutout
(Panel thickness 2 max.)



- Notes
- ① The recommended clamp torque of ref. No. ⑤ : 4 N·m.
LOCTITE 263, HENKEL JAPAN or equivalent is recommended to prevent ref. No. ⑤ from loosening.
 - ② At the connector mount ref. No. ⑥ shall be attached without bite lump.

3	Diallyl phthulate (Black)	UL94V-0	7	Phosphor bronze	Nickel plating
2	Brass	Silver plating 4μm min.	6	Choloroprene rubber	(Black)
1	Brass	Nickel plating	5	Brass	Nickel plating
			4	Diallyl phthulate (Black)	UL94V-0
NO.	MATERIAL	FINISH . REMARKS	NO.	MATERIAL	FINISH . REMARKS

UNITS mm		SCALE 2 : 1	COUNT 	DESCRIPTION OF REVISIONS	DESIGNED	CHECKED	DATE
HIROSE ELECTRIC CO., LTD.				APPROVED : HY. KOBAYASHI 18.03.13 CHECKED : HY. KOBAYASHI 18.03.13 DESIGNED : HY. KISHI 18.03.13 DRAWN : HY. KISHI 18.03.13	DRAWING NO. EDC-003645-31-00 PART NO. RM21WTR-15P(31) CODE NO. CL109-1445-8-31		

Mouser Electronics

Authorized Distributor

Click to View Pricing, Inventory, Delivery & Lifecycle Information:

[Hirose Electric:](#)

[RM21WTR-15P\(31\)](#)