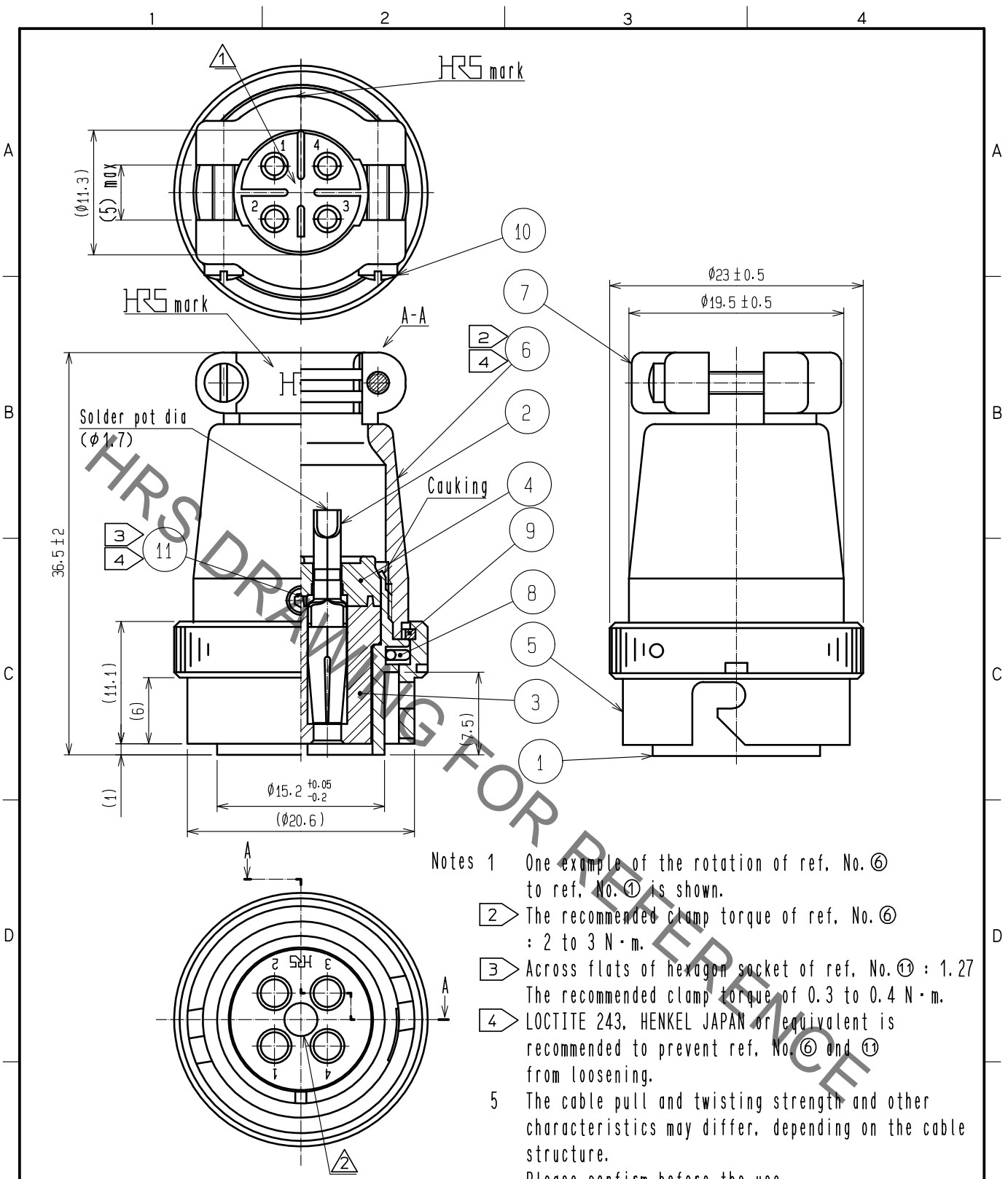


Sep. 1. 2021 Copyright 2021 HIROSE ELECTRIC CO., LTD. All Rights Reserved.  
 In case of consideration for using Automotive equipment / device which demand high reliability, kindly contact our sales window correspondents.



- Notes 1 One example of the rotation of ref. No. ⑥ to ref. No. ① is shown.
- ② The recommended clamp torque of ref. No. ⑥ : 2 to 3 N·m.
- ③ Across flats of hexagon socket of ref. No. ⑪ : 1.27 The recommended clamp torque of 0.3 to 0.4 N·m.
- ④ LOCTITE 243, HENKEL JAPAN or equivalent is recommended to prevent ref. No. ⑥ and ⑪ from loosening.
- 5 The cable pull and twisting strength and other characteristics may differ, depending on the cable structure. Please confirm before the use.

5	BRASS	NICKEL PLATING	11	STEEL	NICKEL PLATING	M2.6×0.45×2
4	PPS	(BLACK) UL94V-0	10	BRASS	NICKEL PLATING	M2×0.4×10
3	PPS	(BLACK) UL94V-0	9	PHOSPHOR BRONZE	NICKEL PLATING	
2	COPPER ALLOY	SILVER PLATING 2μm min.	8	STAINLESS STEEL		
1	ZINC ALLOY	MATTE FINISH NICKEL PLATING	7	ZINC ALLOY	MATTE FINISH NICKEL PLATING	
NO.	MATERIAL	FINISH . REMARKS	NO.	MATERIAL	FINISH . REMARKS	

UNITS mm	SCALE	COUNT	DESCRIPTION OF REVISIONS	DESIGNED	CHECKED	DATE
	2 : 1	② 1	DIS-C-00000841	KN. IKEHARA	HY. KOBAYASHI	16. 03. 02
APPROVED : HY. KOBAYASHI 15. 09. 10			DRAWING NO. EDC-027933-81-00			
CHECKED : HY. KOBAYASHI 15. 09. 10			PART NO. RM15QPS-4SA(81)			
DESIGNED : KN. IKEHARA 15. 09. 10			CODE NO. CL109-0840-7-81			
DRAWN : KN. IKEHARA 15. 09. 10						

# Mouser Electronics

Authorized Distributor

Click to View Pricing, Inventory, Delivery & Lifecycle Information:

[Hirose Electric:](#)

[RM15QPS-4SA\(81\)](#)