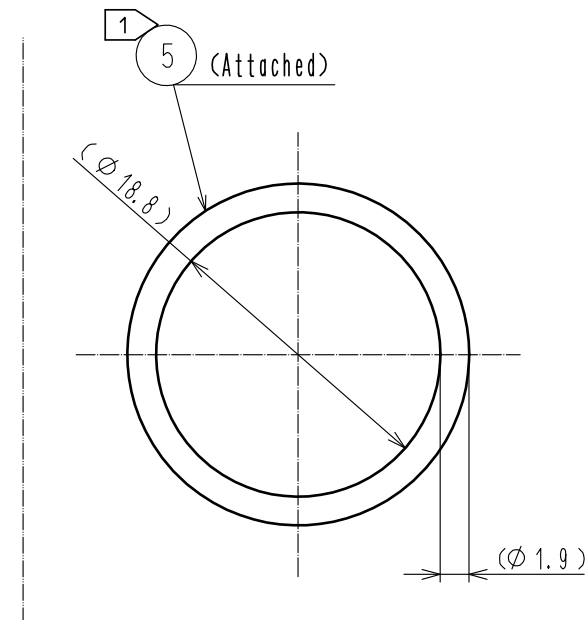
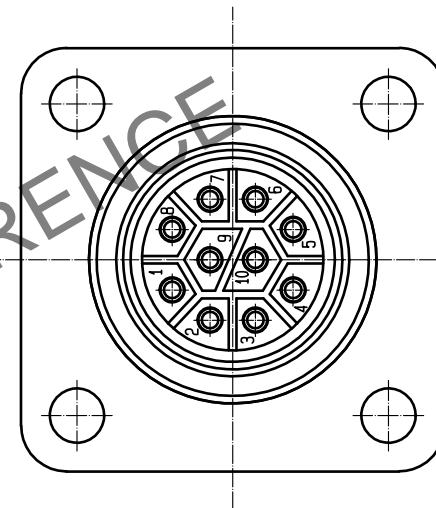
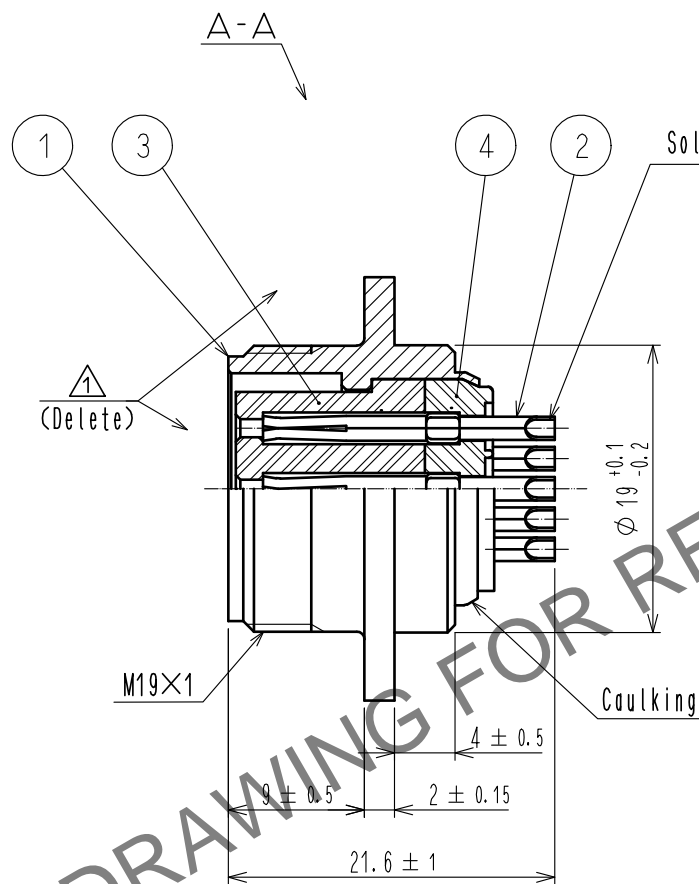
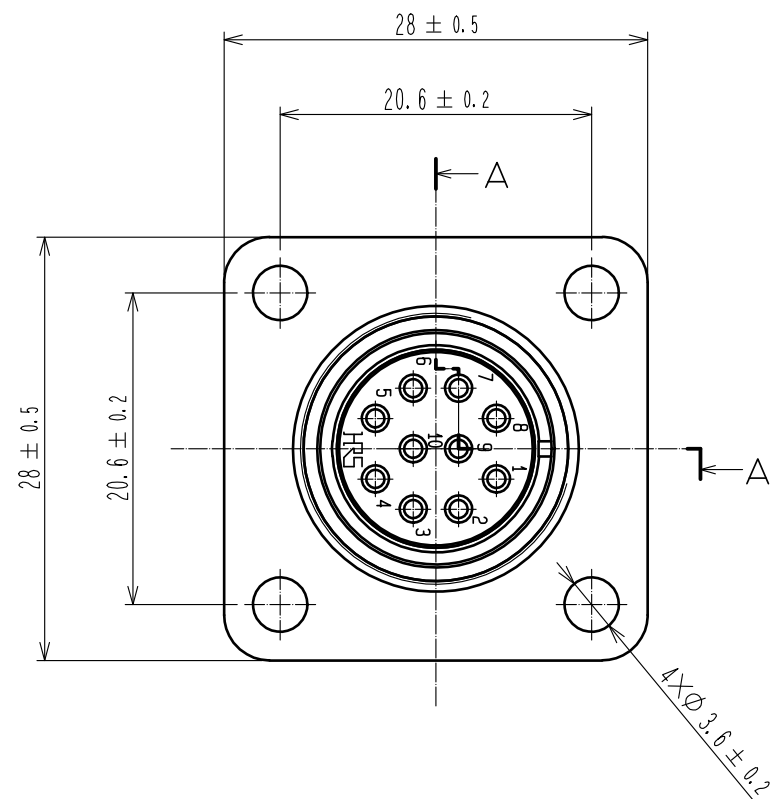
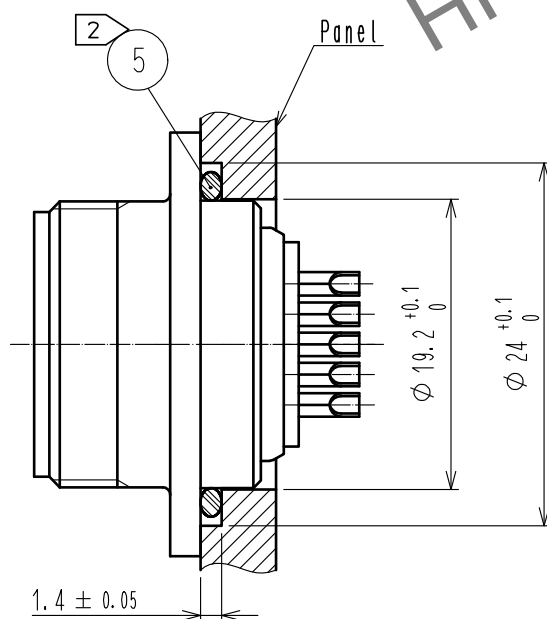


Aug.1.2024 Copyright 2024 HIROSE ELECTRIC CO., LTD. All Rights Reserved.
In case of consideration for using Automotive equipment / device which demand high reliability, kindly contact our sales window correspondents.



1 Fig. 1 Ref. No. 5 panel cutout



- Notes
- 1 When waterproofing with panel, use Ref. No. 5 (O-ring).
The dimension of attaching Ref. No. 5 to a panel is shown in Fig. 1.
 - 2 When mounted on chassis, be careful that Ref. No. 5 is fitted into the indicated groove without any biting.

| | | | | | |
|---------------------------|-----------------------|-------------------------|------------|--|-----------------------|
| 3 | Polyphenylene sulfide | (Black) | | | |
| 2 | Copper alloy | Silver plating 5µm min. | 5 | Silicone rubber | (Black) |
| 1 | Zinc alloy | Chrome plating | 4 | Polyphenylene sulfide | (Black) |
| NO. | MATERIAL | FINISH, REMARKS | NO. | MATERIAL | FINISH, REMARKS |
| UNITS mm | | SCALE 2 : 1 | COUNT 2 | DESCRIPTION OF REVISIONS DIS-C-00015645 | DESIGNED HT. ZENBA |
| HIROSE ELECTRIC CO., LTD. | | APPROVED : TP. KOMATSU | 20230207 | DRAWING NO. | EDC-111103-81-00 |
| | | CHECKED : HY. KOBAYASHI | 20230207 | PART NO. | RM15WTRZB-10S(81) |
| | | DESIGNED : HT. ZENBA | 20230206 | CODE NO. | CL0109-1681-0-81 |
| | | DRAWN : KR. SUZUKI | 20230206 | | |
| | | | | CHECKED | HY. KOBAYASHI |
| | | | | DATE | 20230626 |

Mouser Electronics

Authorized Distributor

Click to View Pricing, Inventory, Delivery & Lifecycle Information:

[Hirose Electric:](#)

[HT802/MT50A-2426](#)