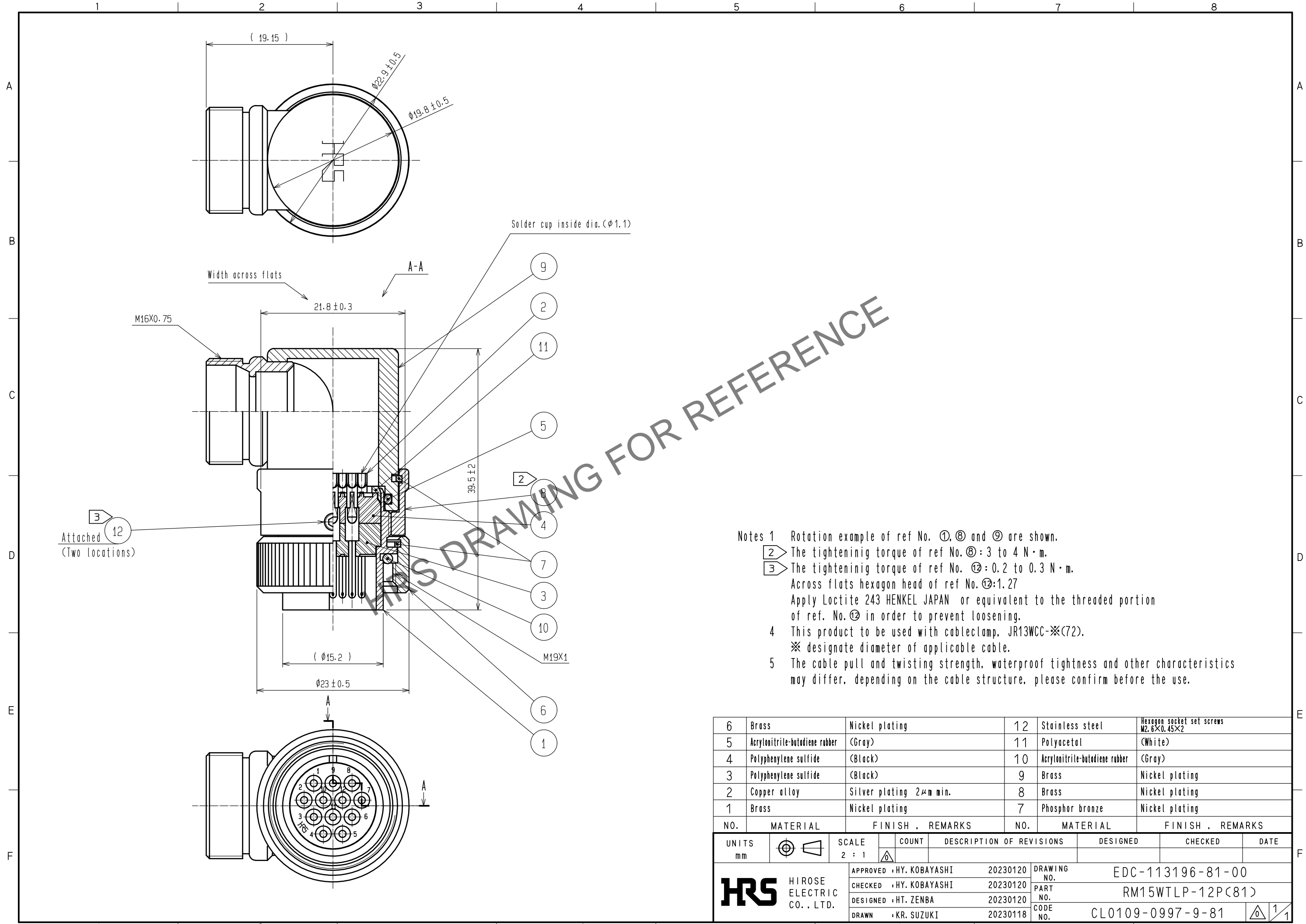


Sep.1.2024 Copyright 2024 HIROSE ELECTRIC CO., LTD. All Rights Reserved.  
In case of consideration for using Automotive equipment / device which demand high reliability, kindly contact our sales window correspondents.



THIS DRAWING FOR REFERENCE

- Notes 1 Rotation example of ref No. ①, ⑧ and ⑨ are shown.  
 ② The tightening torque of ref No. ⑧: 3 to 4 N·m.  
 ③ The tightening torque of ref No. ⑫: 0.2 to 0.3 N·m.  
 Across flats hexagon head of ref No. ⑫: 1.27  
 Apply Loctite 243 HENKEL JAPAN or equivalent to the threaded portion of ref. No. ⑫ in order to prevent loosening.  
 4 This product to be used with cableclamp, JR13WCC-※(72).  
 ※ designate diameter of applicable cable.  
 5 The cable pull and twisting strength, waterproof tightness and other characteristics may differ, depending on the cable structure, please confirm before the use.

6	Brass	Nickel plating	12	Stainless steel	Hexagon socket set screws M2.6X0.45X2
5	Acrylonitrile-butadiene rubber	(Gray)	11	Polyacetal	(White)
4	Polyphenylene sulfide	(Black)	10	Acrylonitrile-butadiene rubber	(Gray)
3	Polyphenylene sulfide	(Black)	9	Brass	Nickel plating
2	Copper alloy	Silver plating 2μm min.	8	Brass	Nickel plating
1	Brass	Nickel plating	7	Phosphor bronze	Nickel plating
NO.	MATERIAL	FINISH . REMARKS	NO.	MATERIAL	FINISH . REMARKS
UNITS mm		SCALE 2 : 1	COUNT	DESCRIPTION OF REVISIONS	
DESIGNED		CHECKED		DATE	
APPROVED : HY. KOBAYASHI 20230120			DRAWING NO. EDC-113196-81-00		
CHECKED : HY. KOBAYASHI 20230120			PART NO. RM15WTL P-12P(81)		
DESIGNED : HT. ZENBA 20230120			CODE NO. CL0109-0997-9-81		
DRAWN : KR. SUZUKI 20230118			1/1		

# Mouser Electronics

Authorized Distributor

Click to View Pricing, Inventory, Delivery & Lifecycle Information:

[Hirose Electric:](#)

[RM15WTLP-12P\(81\)](#)