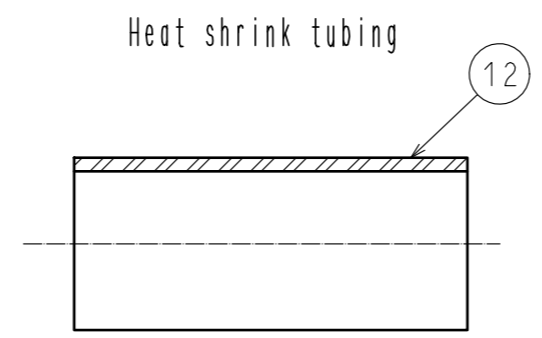
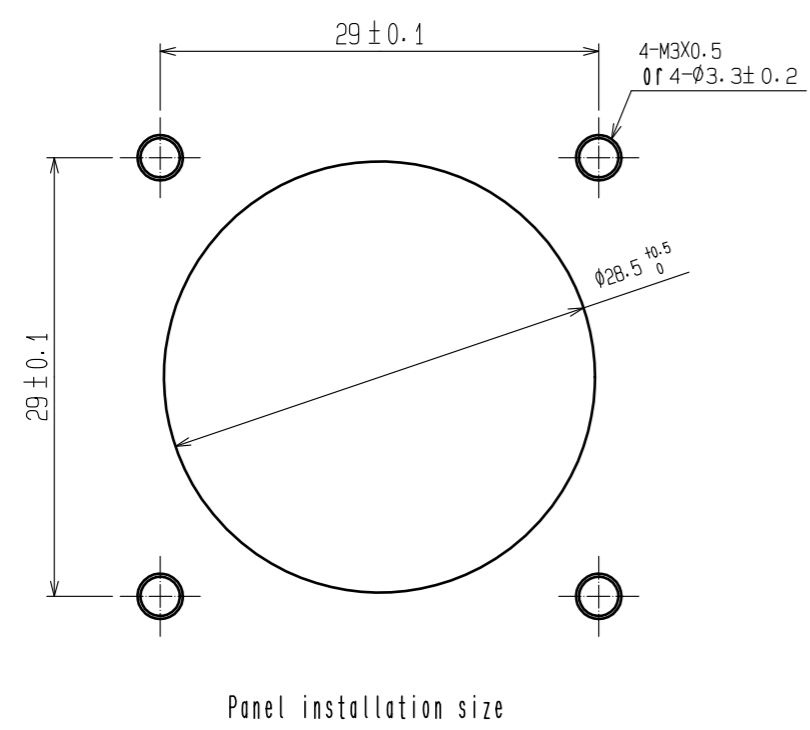
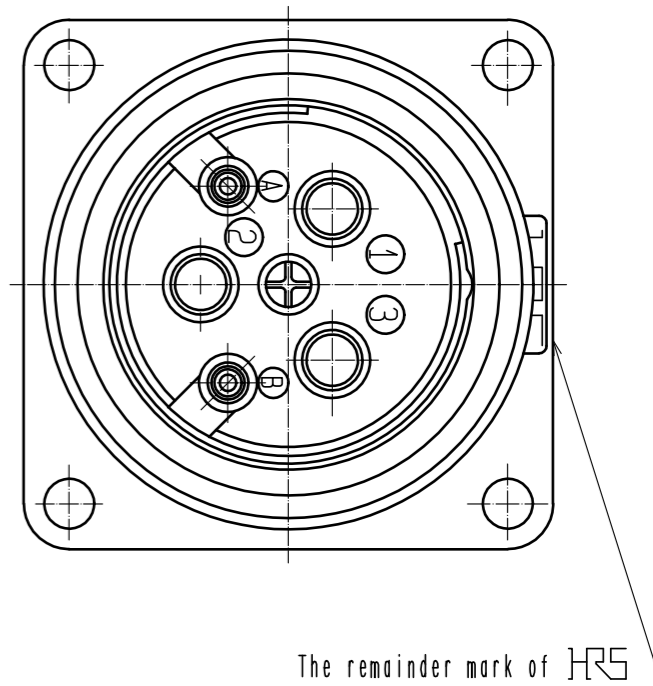
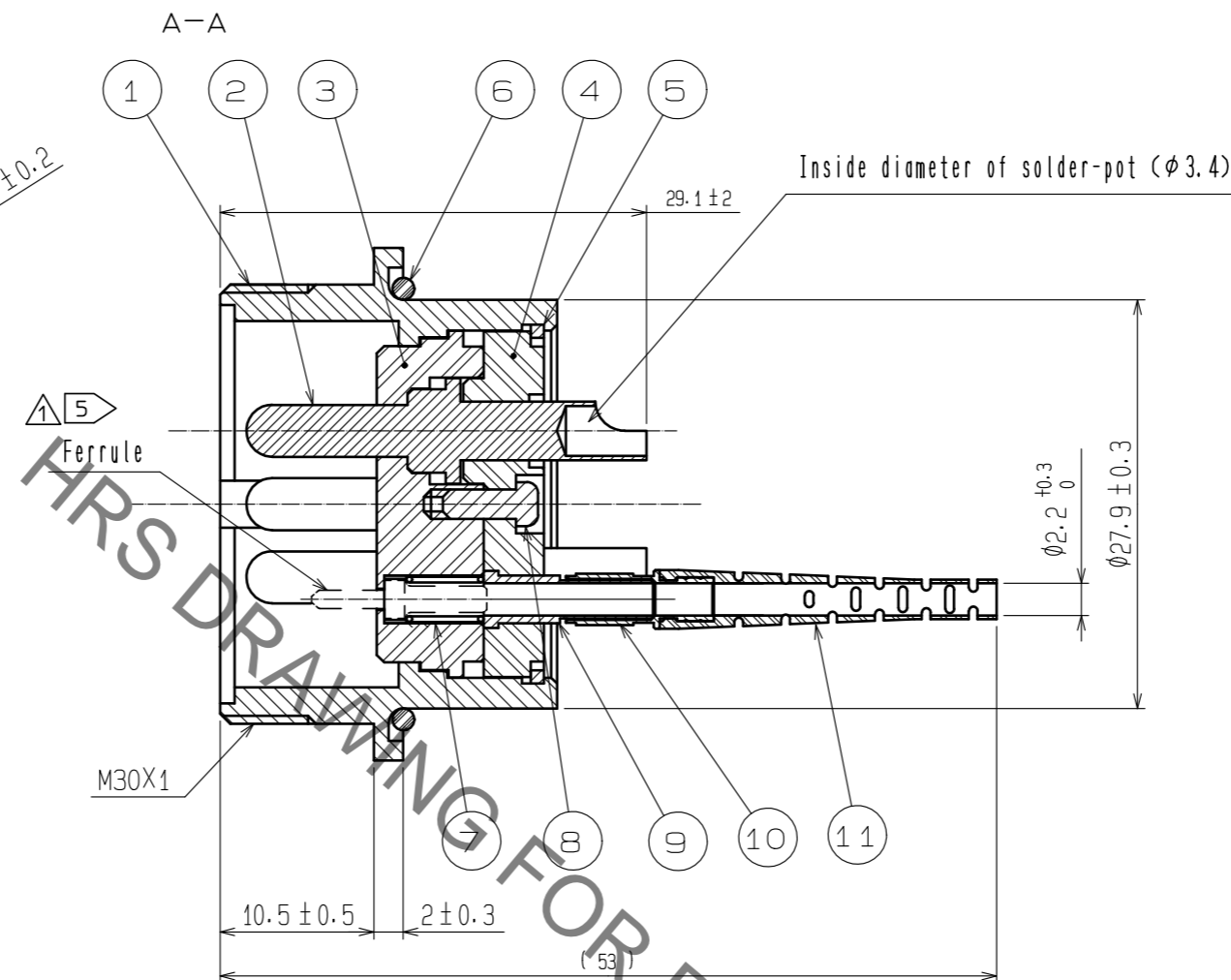
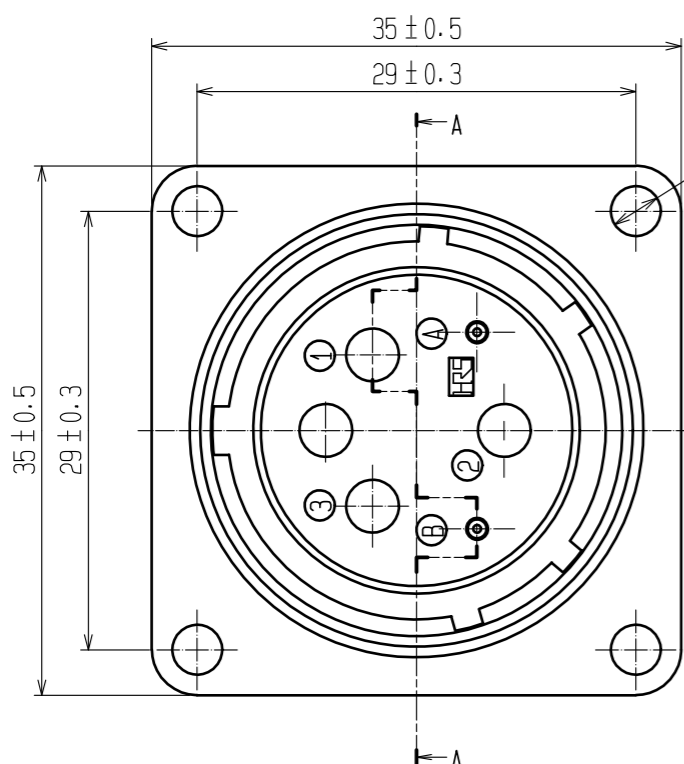


Sep.1.2021 Copyright 2021 HIROSE ELECTRIC CO., LTD. All Rights Reserved.
In case of consideration for using Automotive equipment / device which demand high reliability, kindly contact our sales window correspondents.



Note 1. This drawing shows the state of temporary assembly.
 2. The direction of Solder-pot(No.2) is one example.
 3. A product corresponding to Rohs.
 4. For assembling procedure, please contact our companies sales section and refer to procedure manual ETAD-K0222-00.
 5. The Ferrule is not included.
 Please use the MU ferrule, which is sold separately.

NO.	MATERIAL	FINISH	REMARKS	NO.	MATERIAL	FINISH	REMARKS
6	Silicon rubber	Black		12	Polyolefin	Black	
5	Phosphor bronze	Nickel-plating		11	TPEE	Light purple	
4	PPS	Black		10	Brass	Ni-plating	
3	PPS	Black		9	Brass	Ni-plating	
2	Brass	Ag-plating		8	Steel	Zn-plating	
1	Aluminium	Black Cr-plating		7	Piano wire	Zn-plating	

UNITS mm		SCALE 4 : 1	COUNT 4	DESCRIPTION OF REVISIONS DIS-K-00001733	DESIGNED BENJAMIN RILEY	CHECKED YY.HIYAMA	DATE 20181207
HRS HIROSE ELECTRIC CO., LTD.		APPROVED : HA. OKANO	20080619	DRAWING NO. EDC3-175972-00			
		CHECKED : KS. JOKURA	20080619	PART NO. MF25S-WRF02-0203			
		DESIGNED : YH. MASUZAKI	20080616	CODE NO. CL709-0208-6-00			
		DRAWN : YH. MASUZAKI	20080616			1/1	

Mouser Electronics

Authorized Distributor

Click to View Pricing, Inventory, Delivery & Lifecycle Information:

[Hirose Electric:](#)

[MF25S-WRF02-0203](#)