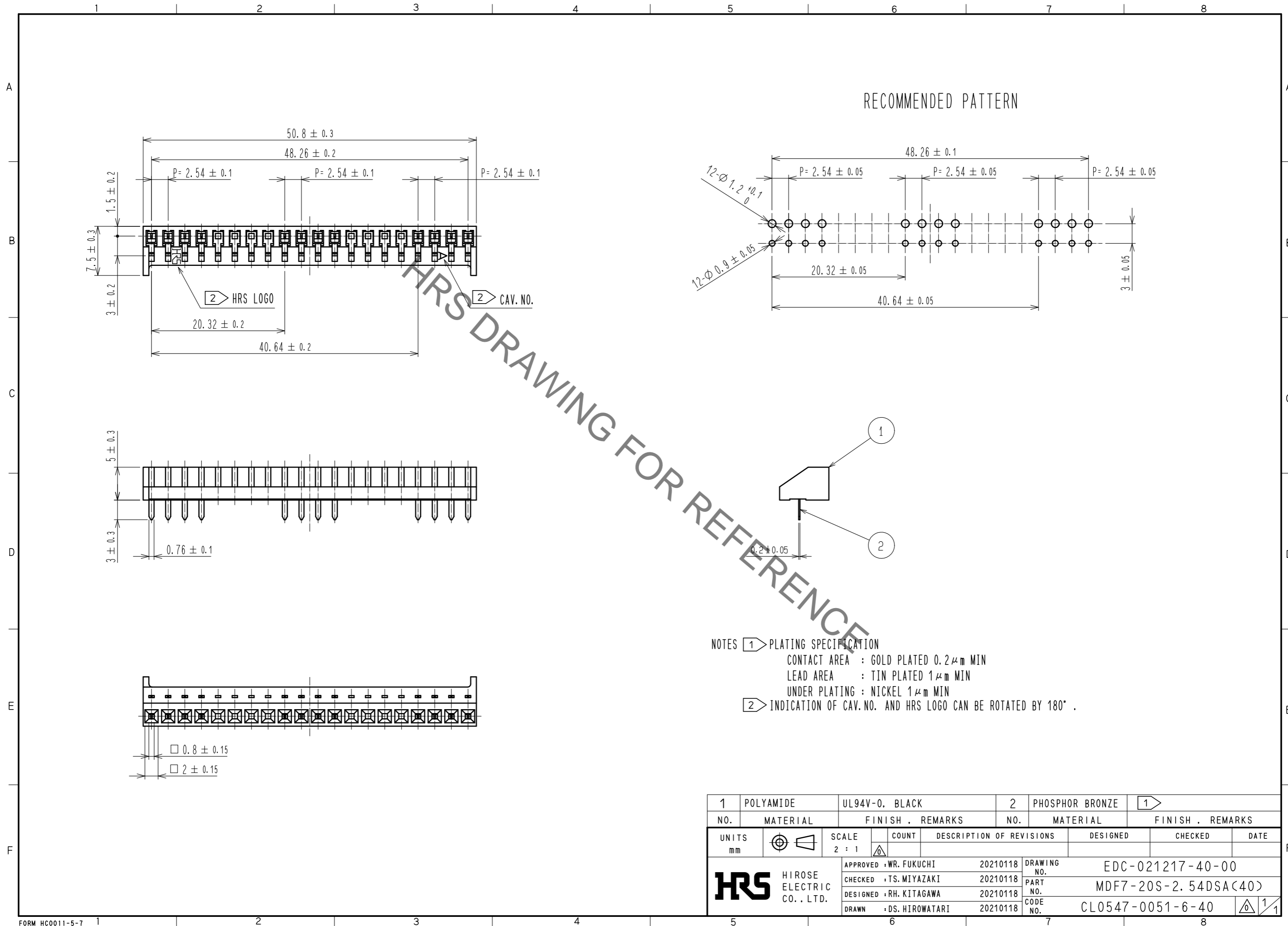


Sep.1.2021 Copyright 2021 HIROSE ELECTRIC CO., LTD. All Rights Reserved.  
In case of consideration for using Automotive equipment / device which demand high reliability, kindly contact our sales window correspondents.



- NOTES
- 1 PLATING SPECIFICATION  
CONTACT AREA : GOLD PLATED 0.2 μm MIN  
LEAD AREA : TIN PLATED 1 μm MIN  
UNDER PLATING : NICKEL 1 μm MIN
  - 2 INDICATION OF CAV.NO. AND HRS LOGO CAN BE ROTATED BY 180° .

1	POLYAMIDE	UL94V-0, BLACK	2	PHOSPHOR BRONZE	1			
NO.	MATERIAL	FINISH, REMARKS	NO.	MATERIAL	FINISH, REMARKS			
UNITS	mm	SCALE	2 : 1	COUNT	DESCRIPTION OF REVISIONS	DESIGNED	CHECKED	DATE
<b>HRS</b> HIROSE ELECTRIC CO., LTD.		APPROVED : WR. FUKUCHI	20210118	DRAWING NO. EDC-021217-40-00				
		CHECKED : TS. MIYAZAKI	20210118	PART NO. MDF7-20S-2.54DSA(40)				
		DESIGNED : RH. KITAGAWA	20210118	CODE NO. CL0547-0051-6-40				
		DRAWN : DS. HIROWATARI	20210118					

# Mouser Electronics

Authorized Distributor

Click to View Pricing, Inventory, Delivery & Lifecycle Information:

[Hirose Electric:](#)

[MDF7-20S-2.54DSA\(40\)](#)