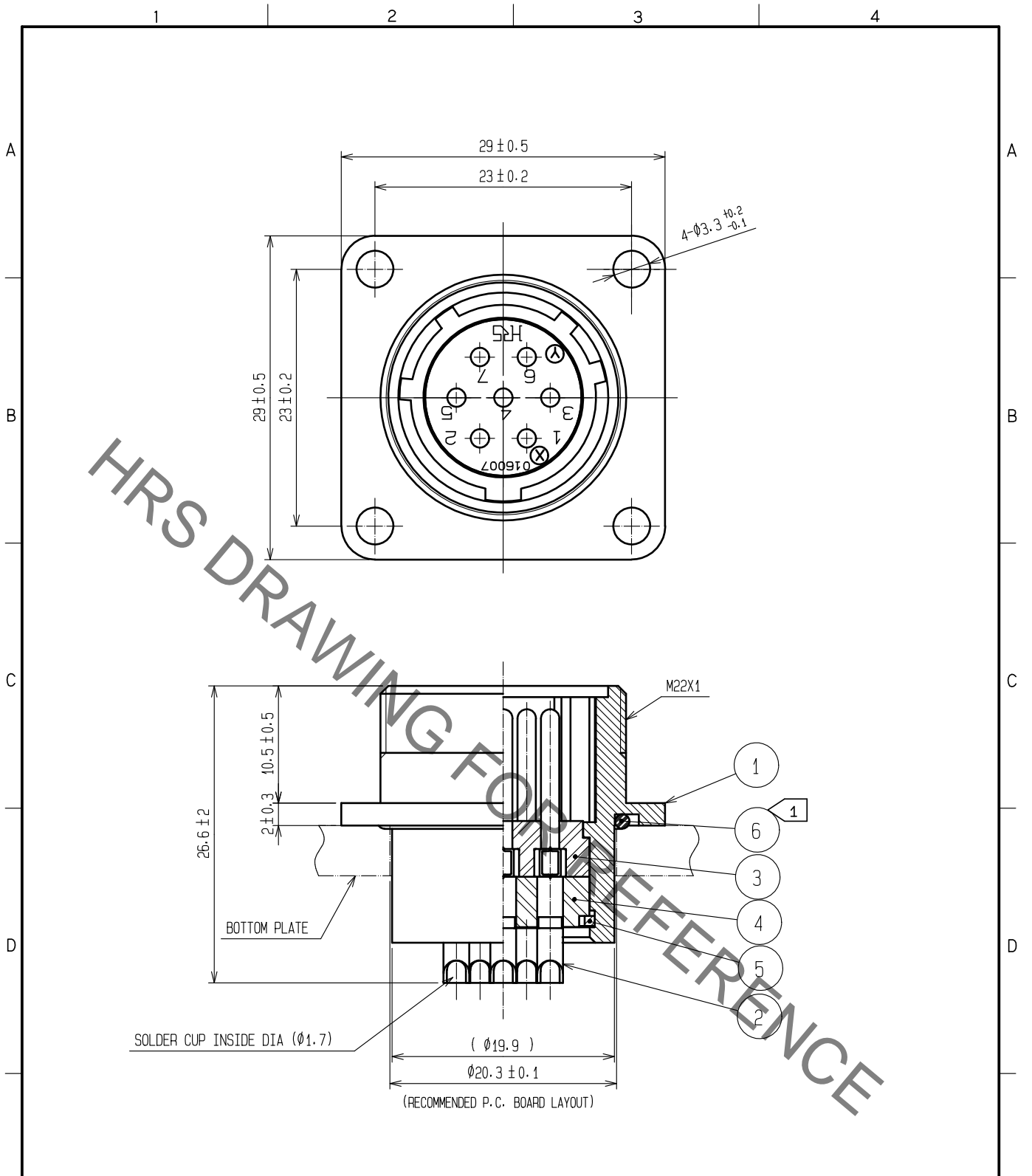


Aug.1.2021 Copyright 2021 HIROSE ELECTRIC CO., LTD. All Rights Reserved.
 In case of consideration for using Automotive equipment / device which demand high reliability, kindly contact our sales window correspondents.



NOTE ① When mounted on chassis, be careful that reference no. ⑥ is fitted into the indicated groove without any biting.

3	PHENOL-FORMAL DEHYDE (BLACK)	UL94V-0	6	NBR	(BLACK)		
2	COPPER ALLOY	SILVER PLATING 2μm min	5	PHOSPHOR BRONZE	NICKEL PLATING		
1	ALMINUM ALLOY	BLACK CHROME PLATING	4	PHENOL-FORMAL DEHYDE (BLACK)	UL94V-0		
NO.	MATERIAL	FINISH .	REMARKS	NO.	MATERIAL	FINISH .	REMARKS

UNITS mm		SCALE 2 : 1	COUNT 	DESCRIPTION OF REVISIONS	DESIGNED	CHECKED	DATE
-------------	--	----------------	-----------	--------------------------	----------	---------	------

HIROSE ELECTRIC CO., LTD.	APPROVED :HY. KOBAYASHI	18. 03. 12	DRAWING NO.	EDC-110579-31-00
	CHECKED :HY. KOBAYASHI	18. 03. 12	PART NO.	JR16WR-7P(31)
	DESIGNED :TH. KAMEYA	18. 03. 09	CODE NO.	CL114-2025-3-31
	DRAWN :TH. KAMEYA	18. 03. 09		1/1

Mouser Electronics

Authorized Distributor

Click to View Pricing, Inventory, Delivery & Lifecycle Information:

[Hirose Electric:](#)

[JR16WR-7P\(31\)](#)