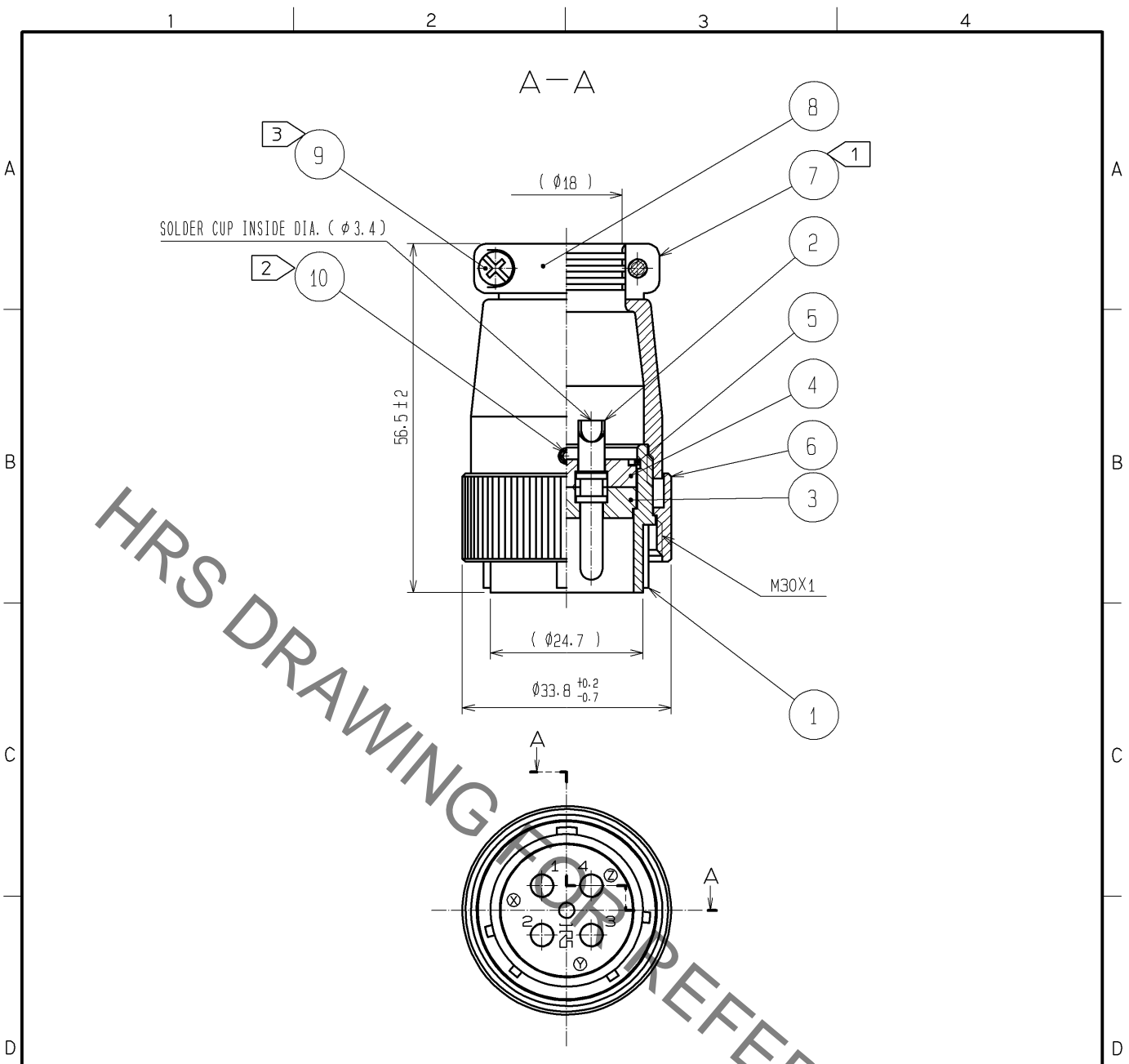


Sep.1.2021 Copyright 2021 HIROSE ELECTRIC CO., LTD. All Rights Reserved.
In case of consideration for using Automotive equipment / device which demand high reliability, kindly contact our sales window correspondents.



- NOTES
- ① THE RECOMMENDED TIGHTENING TORQUE OF REF. NO. ⑦ SHALL BE 5 TO 5.5N · m.
 - ② THE RECOMMENDED TIGHTENING TORQUE OF REF. NO. ⑩ SHALL BE 0.3 TO 0.4N · m.
 - ③ THE RECOMMENDED TIGHTENING TORQUE OF REF. NO. ⑨ SHALL BE 0.5 TO 0.6N · m.
 - 4 LOCTITE 263, HENKEL JAPAN OR EQUIVALENT IS RECOMMENDED TO PREVENT REF. NO. ①, ⑨ AND ⑩ FROM LOOSENING.
 - 5 ONE EXAMPLE OF THE ROTATION OF REF. NO. ⑦ TO REF. NO. ① AND THE SOLDER CUP OF REF. NO. ② ARE SHOWN.
 - 6 THE CABLE PULL AND TWISTING STRENGTH AND OTHER CHARACTERISTICS MAY DIFFER, DEPENDING ON THE CABLE STRUCTURE, PLEASE CONFIRM BEFORE THE USE.

5	PHOSPHOR BRONZE	NICKEL PLATING	10	STEEL	NICKEL PLATING HEX:1.27
4	POLYPHENYLENE SULFIDE	(BLACK) UL94V-0	9	BRASS	NICKEL PLATING M3×0.5×10
3	POLYPHENYLENE SULFIDE	(BLACK) UL94V-0	8	ALUMINUM ALLOY	MATTE FINISH NICKEL PLATED
2	BRASS	SILVER PLATING 2μm min.	7	ALUMINUM ALLOY	MATTE FINISH NICKEL PLATED
1	ALUMINUM ALLOY	MATTE FINISH NICKEL PLATED	6	ALUMINUM ALLOY	MATTE FINISH NICKEL PLATED
NO.	MATERIAL	FINISH , REMARKS	NO.	MATERIAL	FINISH , REMARKS

UNITS mm	SCALE 1 : 1	COUNT	DESCRIPTION OF REVISIONS	DESIGNED	CHECKED	DATE
HRS HIROSE ELECTRIC CO., LTD.			APPROVED : EJ. KUNII 13. 04. 05 CHECKED : HY. KISHI 13. 04. 05 DESIGNED : HK. NAMAI 13. 04. 05 DRAWN : HK. NAMAI 13. 04. 05	DRAWING NO. EDC4-118215-00 PART NO. JR25PH-4P CODE NO. CL114-0626-2-00	1/1	

Mouser Electronics

Authorized Distributor

Click to View Pricing, Inventory, Delivery & Lifecycle Information:

[Hirose Electric:](#)

[JR25PH-4P](#)