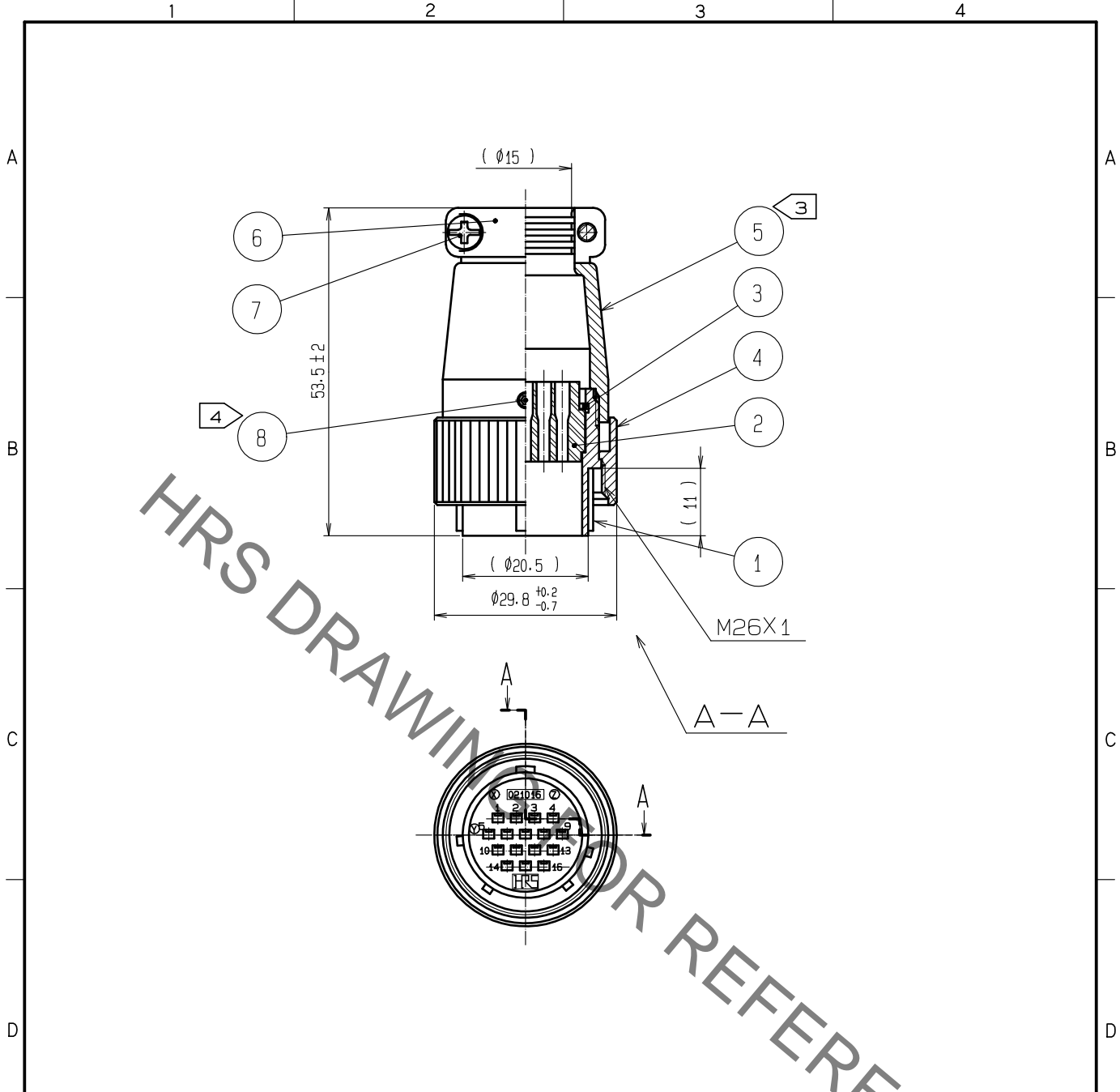


Sep.1.2021 Copyright 2021 HIROSE ELECTRIC CO., LTD. All Rights Reserved.  
In case of consideration for using Automotive equipment / device which demand high reliability, kindly contact our sales window correspondents.



- NOTES
1. APPLICABLE CRIMPING CONTACT : JRC-PC2-212 (AWG#24 TO 20)  
JRC-PC2-222 (AWG#28 TO 24)
  2. APPLICABLE CRIMP CONTACT EXTRACTION TOOL : RM-TP (CL150-0008-7)
  - ③ THE RECOMMENDED CLUMP TORQUE OF REF.NO.⑤ TO BE 4 TO 4.5N·m.
  - ④ ACROSS FLATS OF HEXAGON HEAD OF REF.NO.⑥ TO BE 1.27mm.  
THE RECOMMENDED CLUMP TORQUE OF REF.NO.⑥ TO BE 0.3 TO 0.4N·m.  
LOCTITE 243, HENKEL JAPAN IS RECOMMENDED TO PREVENT REF.NO.⑥ FROM LOOSENING.
  5. ROTATION EXAMPLES OF REF.NO.① AND ⑤ ARE SHOWN.
  6. THE CABLE PULL AND TWISTING AND OTHER CHARACTERISTICS MAY DIFFER, DEPENDING ON THE CABLE STRUCTURE.  
PLEASE CONFIRM BEFORE THE USE.

4	ALUMINUM ALLOY	MATTE FINISH NICKEL PLATED	8	STEEL	NICKEL PLATING.	HEX SOCKET SET SCREW M2.6X0.45X10
3	PHOSPHOR BRONZE	NICKEL PLATING	7	BRASS	NICKEL PLATING	M3X0.5X10
2	POLYCARBONATE	(BLACK) UL94V-0	6	ALUMINUM ALLOY	MATTE FINISH NICKEL PLATED	
1	ALUMINUM ALLOY	MATTE FINISH NICKEL PLATED	5	ALUMINUM ALLOY	MATTE FINISH NICKEL PLATED	
NO.	MATERIAL	FINISH . REMARKS	NO.	MATERIAL	FINISH . REMARKS	

UNITS mm	SCALE 1 : 1	COUNT	DESCRIPTION OF REVISIONS	DESIGNED	CHECKED	DATE
<b>HIROSE ELECTRIC CO., LTD.</b>			APPROVED : EJ. KUNII 16.01.25 CHECKED : EJ. KUNII 16.01.25 DESIGNED : TY. TAKAHASHI 16.01.25 DRAWN : TY. TAKAHASHI 16.01.25	DRAWING NO. EDC-029005-71-00 PART NO. JR21PK-16PC(71) CODE NO. CL114-0572-5-71	1/1	

# Mouser Electronics

Authorized Distributor

Click to View Pricing, Inventory, Delivery & Lifecycle Information:

[Hirose Electric:](#)

[JR21PK-16PC\(71\)](#)