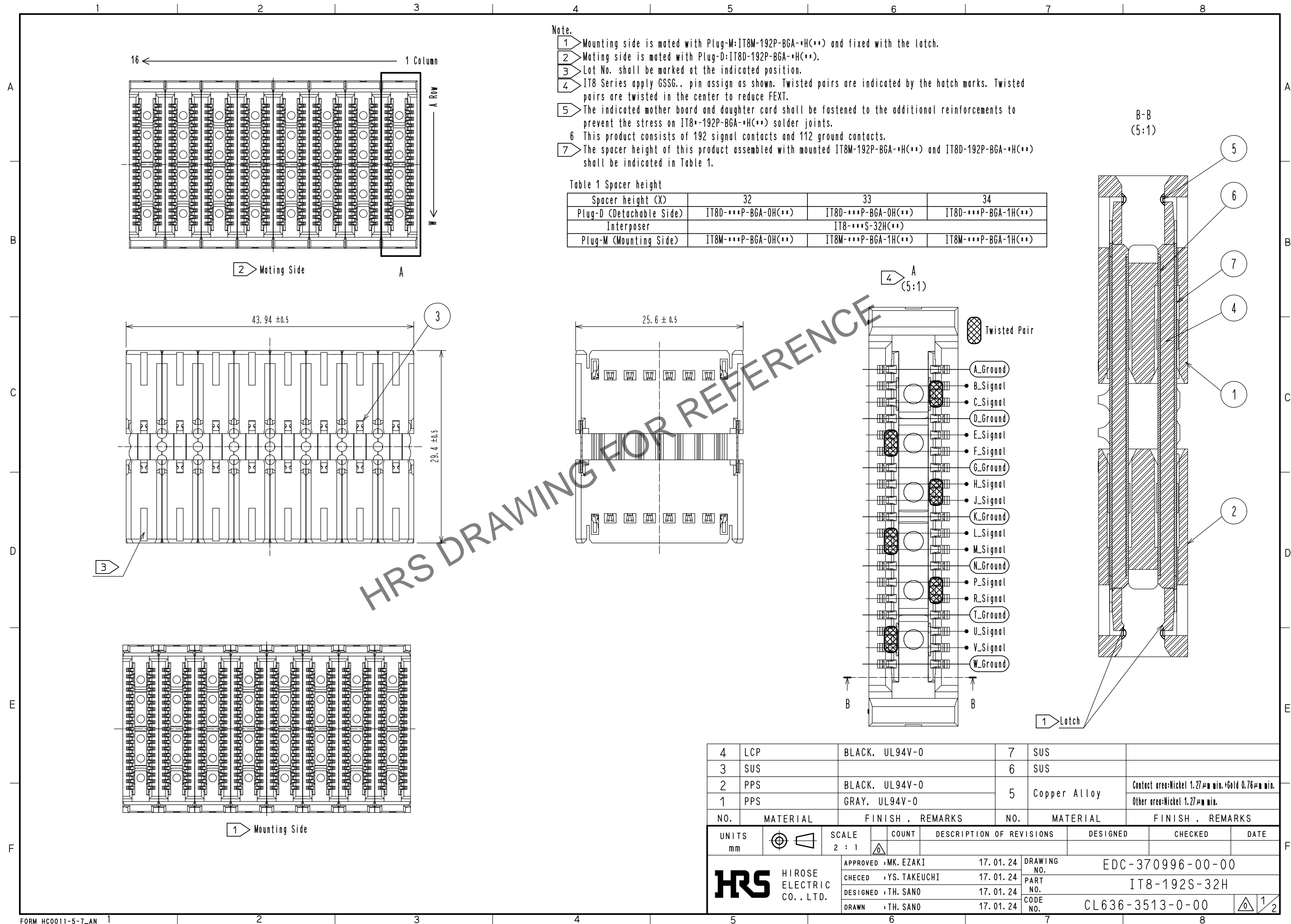
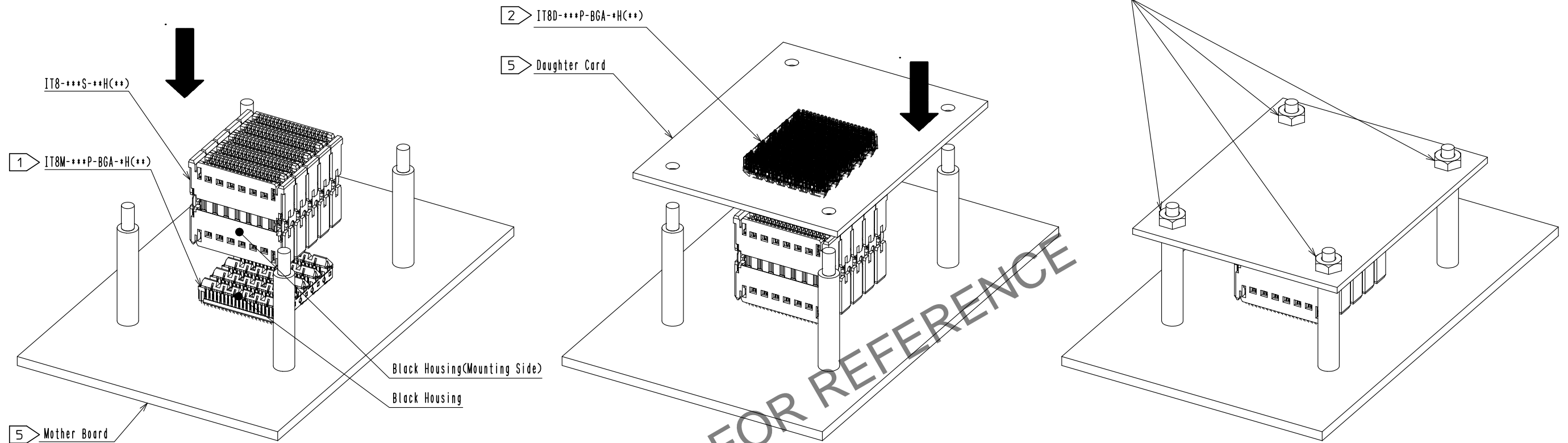


Nov.1.2024 Copyright 2024 HIROSE ELECTRIC CO., LTD. All Rights Reserved.
In case of consideration for using Automotive equipment / device which demand high reliability, kindly contact our sales window correspondents.



Nov.1.2024 Copyright 2024 HIROSE ELECTRIC CO., LTD. All Rights Reserved.
In case of consideration for using Automotive equipment / device which demand high reliability, kindly contact our sales window correspondents.

IT8 Assembly Process

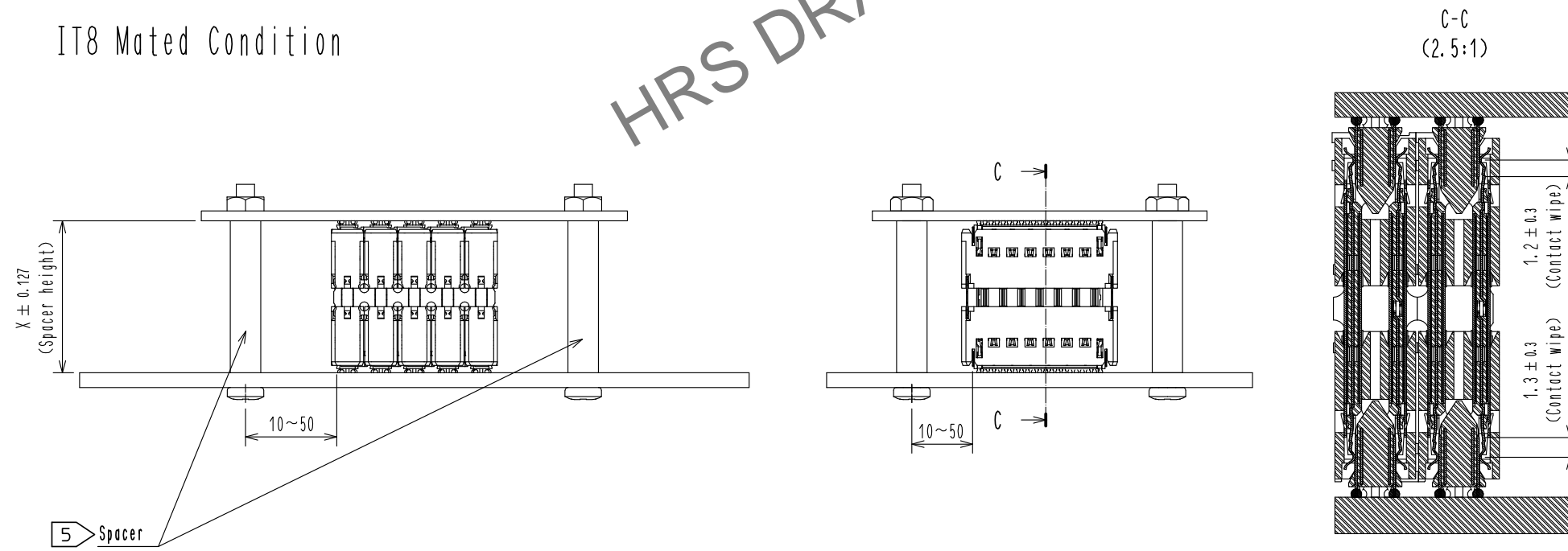


1) Insert mounting side of Interposer(IT8-***S-**H(**)) by pressing on top of Interposer into reflowed Mounting Plug(IT8M-***P-BGA-***H(**)) having black housings.

2) Insert Detachable Plug(IT8D-***P-BGA-***H(**)) having gray housings into mating side of Interposer(IT8-***S-**H(**)).

3) Install and tighten nuts to fix mated Detachable Plug after completion of mating.

IT8 Mated Condition



HRS

DRAWING NO.	EDC-370996-00-00
PART NO.	IT8-192S-32H
CODE NO.	CL636-3513-0-00

2/2

Mouser Electronics

Authorized Distributor

Click to View Pricing, Inventory, Delivery & Lifecycle Information:

[Hirose Electric:](#)

[IT8-192S-32H](#)