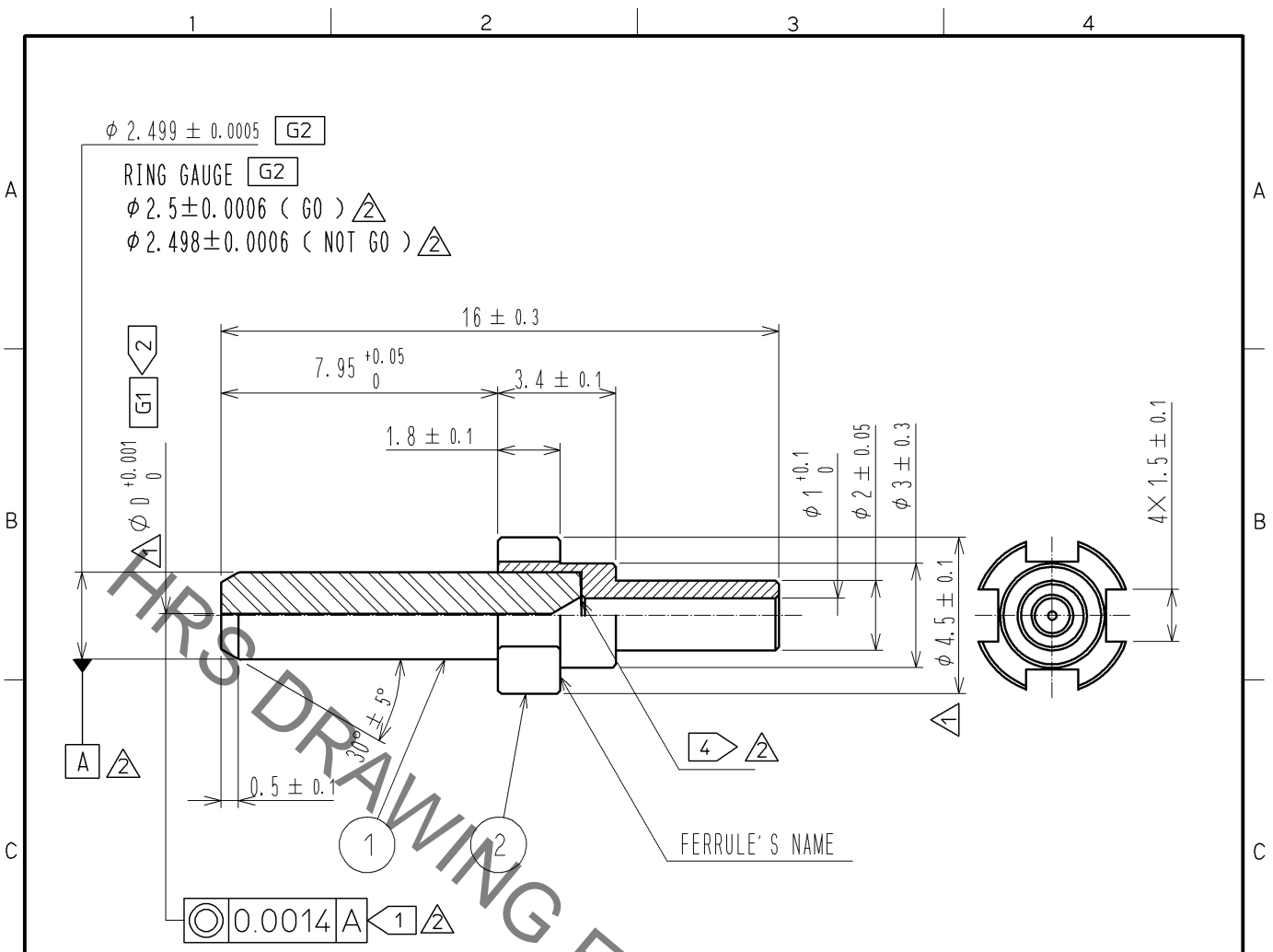


Jun.1.2021 Copyright 2021 HIROSE ELECTRIC CO., LTD. All Rights Reserved.  
 In case of consideration for using Automotive equipment / device which demand high reliability, kindly contact our sales window correspondents.



- NOTE.
- ① The concentricity of  $\phi D$  to datum A at the ferrule end face, should be 0.0007 mm or less.
  - ② D is a number of ferrule's name. Refer to the table for the hole diameter.
  - ③ The pull-out force of ① from ② is more than 98.1N.
  - ④ The distance between the rear edge of ① and the bottom of ②'s hole, should be 0.1 mm or less.
  - ⑤ Packed into 100 pieces per package.

TABLE 1

| FERRULE'S NAME | $\phi D$ | PIN GAUGE ( $\pm 0.00015$ )   | PART NO.           | CODE NO.        |
|----------------|----------|-------------------------------|--------------------|-----------------|
| 5S             | 0.1250   | 0.125 (GO) , 0.1265 (NOT GO)  | HSC-F321-A125(10)  | CL704-0070-9-10 |
| 5V             | 0.1255   | 0.1255 (GO) , 0.1270 (NOT GO) | HSC-F321-A1255(10) | CL704-0200-2-10 |
| 6S             | 0.1260   | 0.126 (GO) , 0.1275 (NOT GO)  | HSC-F321-A126(10)  | CL704-0071-1-10 |

|                           |          |                                     |                             |  |                        |
|---------------------------|----------|-------------------------------------|-----------------------------|--|------------------------|
| 1                         | Zirconia |                                     | 2                           | Stainless steel                          |                        |
| NO.                       | MATERIAL | FINISH . REMARKS                    | NO.                         | MATERIAL                                 | FINISH . REMARKS       |
| UNITS<br>mm               |          | SCALE<br>5 : 1                      | COUNT<br>13                 | DESCRIPTION OF REVISIONS<br>DIS-K-002575 | DESIGNED<br>KS. JOKURA |
| HIROSE ELECTRIC CO., LTD. |          | APPROVED : MT. SHIBUTANI 11. 04. 11 | DRAWING NO. EDC4-177650-00  |  |                        |
|                           |          | CHECKED : FS. YOSHIDA 11. 04. 08    | PART NO. HSC-F321-A****(10) |  |                        |
|                           |          | DESIGNED : TY. SATO 11. 04. 07      | CODE NO.                    |  |                        |
|                           |          | DRAWN : SR. TOYOKAWA 11. 04. 04     | 1/1                         |  |                        |

# Mouser Electronics

Authorized Distributor

Click to View Pricing, Inventory, Delivery & Lifecycle Information:

[Hirose Electric:](#)

[HSC-F321-A126\(10\)](#)