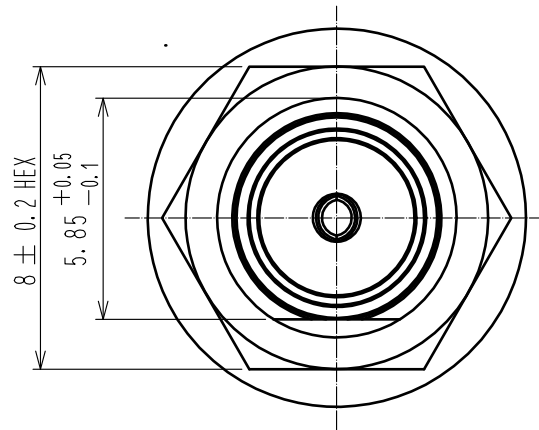


Sep.1.2021 Copyright 2021 HIROSE ELECTRIC CO., LTD. All Rights Reserved.
In case of consideration for using Automotive equipment / device which demand high reliability, kindly contact our sales window correspondents.

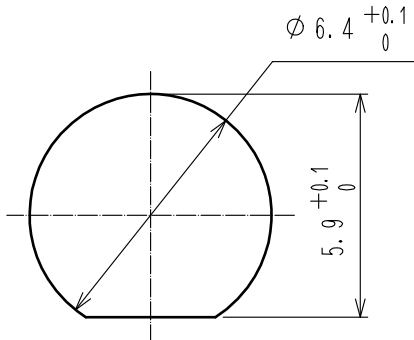
CABLE ASSEMBLY TOOL

FOR SOLDERING : HRM-200/SO-MD

FOR PRESS FITTING : HRM-200-BPJBN/CV-MD

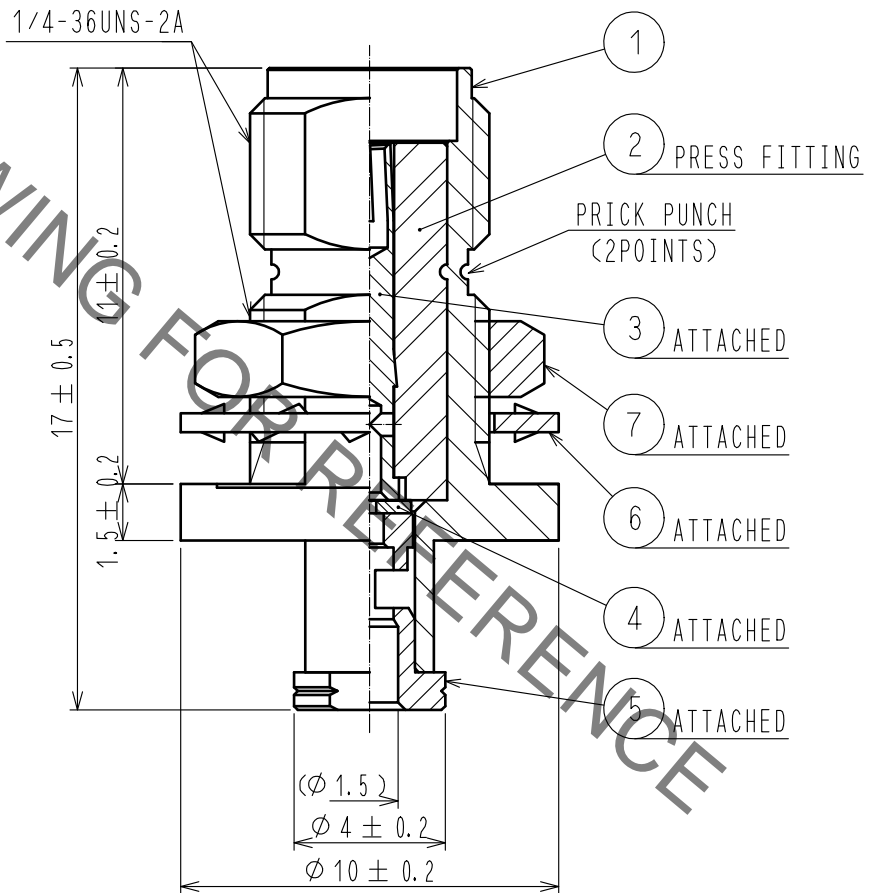


HRS DRAWING FOR REFERENCE



PANEL CUTOUT

PANEL THICKNESS : 0.7 ~ 2.2 mm



4	PTFE				
3	BERYLLIUM COPPER	GOLD PLATING	7	BRASS	NICKEL PLATING
2	PTFE		6	BRASS Δ	NICKEL PLATING
1	BRASS	NICKEL PLATING	5	BRASS	GOLD PLATING
NO.	MATERIAL	FINISH . REMARKS	NO.	MATERIAL	FINISH . REMARKS

UNITS mm		SCALE 5 : 1	COUNT Δ 1	DESCRIPTION OF REVISIONS DIS-D-00004170	DESIGNED NK. OOSAWA	CHECKED TO. KATAYAMA	DATE 20190619
-------------	--	----------------	---------------------	--	------------------------	-------------------------	------------------

HRS HIROSE ELECTRIC CO., LTD.	APPROVED : IJ. MITANI	20060325	DRAWING NO.	EDC-305112-40-40	
	CHECKED : MH. YAMANE	20060325	PART NO.	HRM-200-066BPJBN(40)	
	DESIGNED : TS. NOBE	20060325	CODE NO.	CL323-0798-5-40	Δ 1/1
	DRAWN : HS. TAKEUCHI	20060316			

Mouser Electronics

Authorized Distributor

Click to View Pricing, Inventory, Delivery & Lifecycle Information:

[Hirose Electric:](#)

[HRM-200-066BPJBN\(40\)](#)