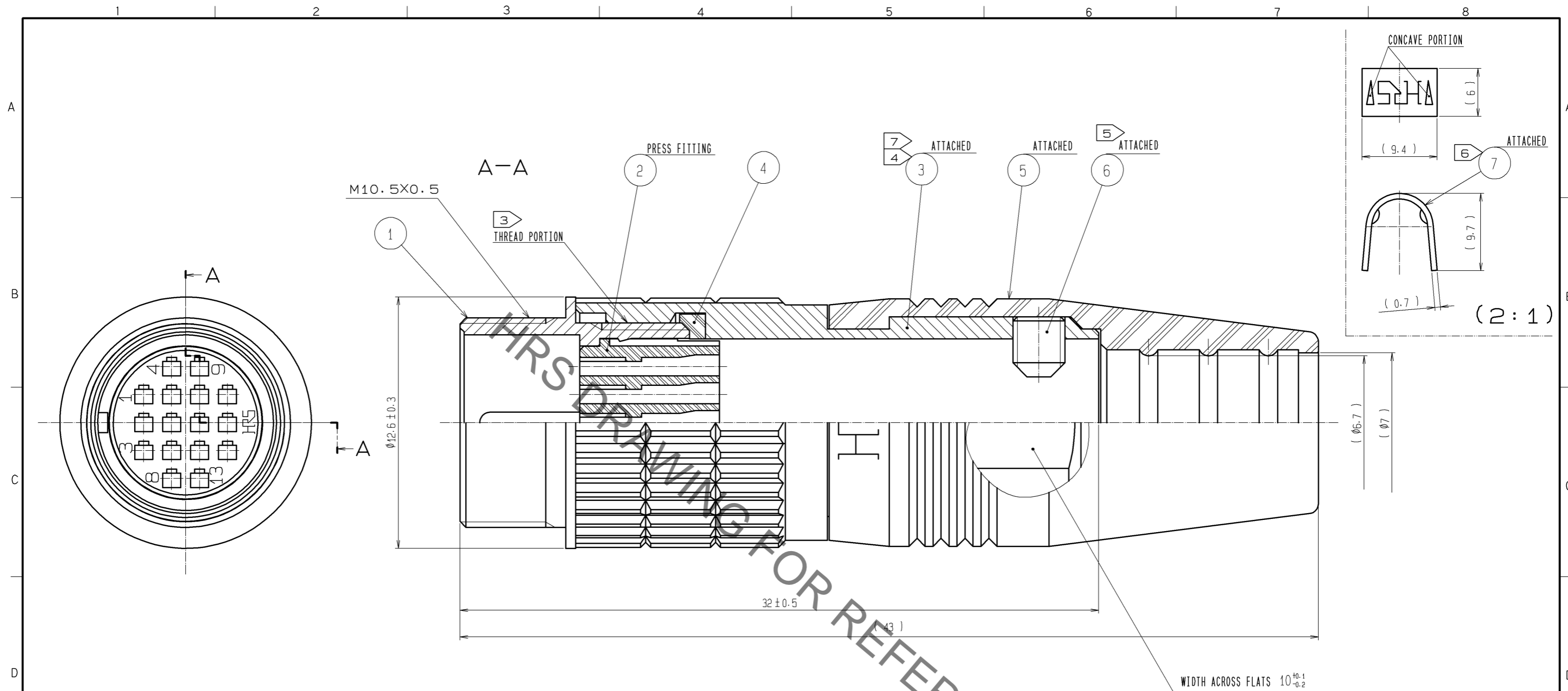


Sep.1.2021 Copyright 2021 HIROSE ELECTRIC CO., LTD. All Rights Reserved.
In case of consideration for using Automotive equipment / device which demand high reliability, kindly contact our sales window correspondents.



- NOTES
- 1 APPLICABLE CRIMP CONTACT:HR25-PC-211(CL125-0420-0)(APPLICABLE WIRE:AWG#30,WIRE JACKET DIAMETER:φ0.71 MAX.)
 - 2 APPLICABLE CONTACT REMOVAL TOOL(EXTRACTION TOOL):HR25-TP(CL150-0091-0)
 - 3 THREAD PORTION OF REF. No. ① IS APPLIED WITH PRECOATING TO PREVENT LOOSENESS.
HOWEVER, THE ADHESIVE EFFECTIVENESS IS DECREASED WHEN REUSED.
THEREFORE, THREAD PORTION IS RECOMMENDED TO COAT WITH LOCTITE 263 MANUFACTURED BY HENKEL JAPAN OR EQUIVALENT.
 - 4 THE RECOMMENDED TIGHTENING TORQUE OF REF. No. ③ TO BE 1 N·m.
 - 5 THE TIP OF REF. No. ⑥ SHALL BE FIXED TO THE CONCAVE PORTION WITH REF. No. ⑦ CLAMPED TO THE CABLE.
THE RECOMMENDED TIGHTENING TORQUE OF REF. No. ⑥ TO BE 0.3 TO 0.4 N·m.
LOCTITE 263,HENKEL JAPAN OR EQUIVALENT IS RECOMMENDED TO PREVENT REF.NO. ⑥ FROM LOOSENING.
 - 6 MANUAL CRIMPING TOOL OF REF. No. ⑦ : HR10A-TC-02(CL150-0041-2)(THE HOLE DIAMETER FOR CRIMPING:φ7)
 - 7 REF.NO. ④ IS INCLUDED IN REF.NO. ③.
 - 8 ONE EXAMPLE OF THE ROTATION OF REF.NO.③ TO REF.NO.① IS SHOWN.
 - 9 THE CABLE PULL AND TWISTING STRENGTH AND OTHER CHARACTERISTICS MAY DIFFER,DEPENDING ON THE CABLE STRUCTURE.
PLEASE CONFIRM BEFORE THE USE.

NO.	MATERIAL	FINISH . REMARKS	NO.	MATERIAL	FINISH . REMARKS
4	ETHYLENE PROPYLENE RUBBER	(BLACK)	7	BRASS	
3	BRASS	NICKEL PLATING	6	STEEL	NICKEL PLATING, HEX SOCKET SET SCREW HEX:1.27
2	POLYPHENYLENE SULFIDE	(BLACK) UL94V-0	5	ETHYLENE PROPYLENE RUBBER	(BLACK)
1	ZINC ALLOY	MATTE FINISH NICKEL PLATED			

UNITS	SCALE	COUNT	DESCRIPTION OF REVISIONS	DESIGNED	CHECKED	DATE
mm	5 : 1	△				
APPROVED : E.J. KUNII			13. 04. 15	DRAWING NO. EDC3-110397-72		
CHECKED : HY. KISHI			13. 04. 15	PART NO. HR25-9TJ-16PC(72)		
DESIGNED : HS. NAGANO			13. 04. 15	CODE NO. CL125-0416-3-72		
DRAWN : HS. NAGANO			13. 04. 15	△ 1/1		

Mouser Electronics

Authorized Distributor

Click to View Pricing, Inventory, Delivery & Lifecycle Information:

[Hirose Electric:](#)

[HR25-9TJ-16PC\(72\)](#)