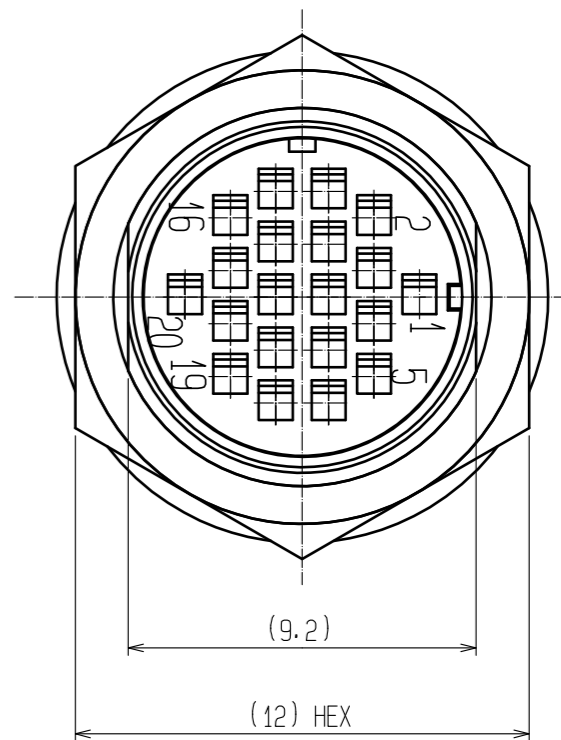
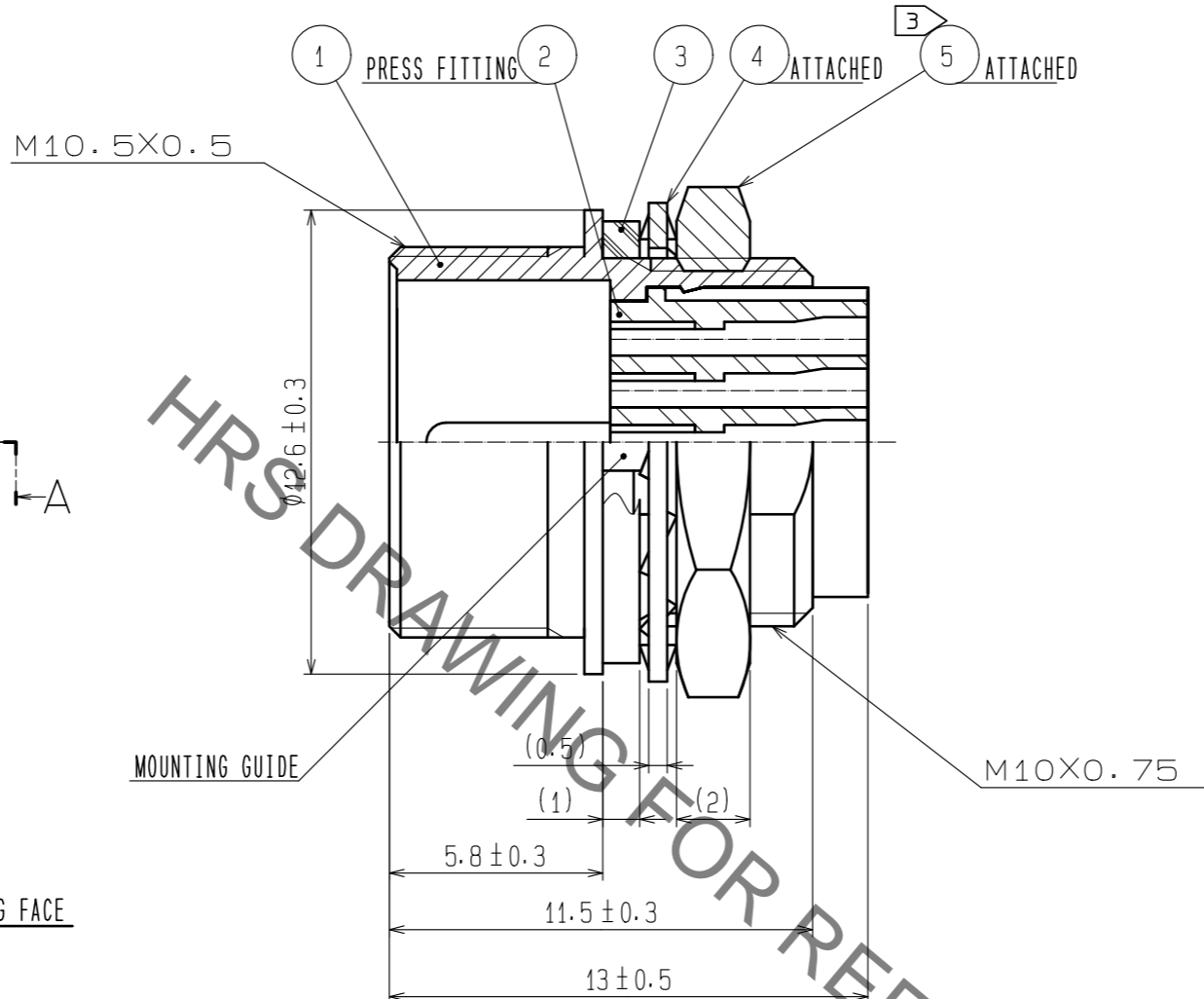
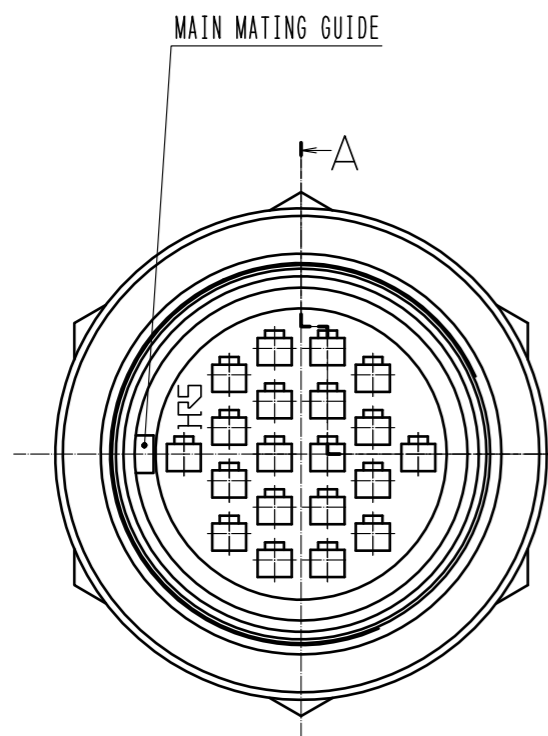
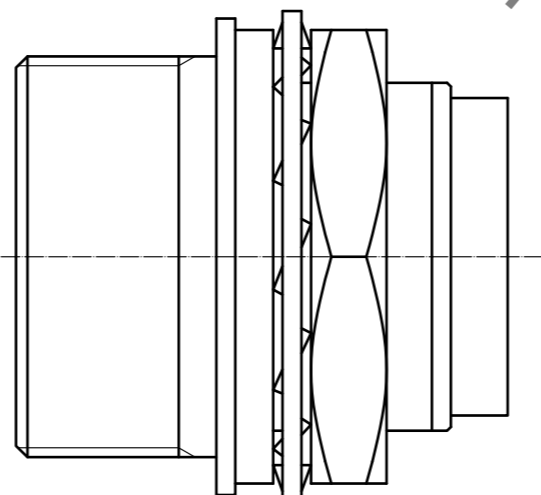
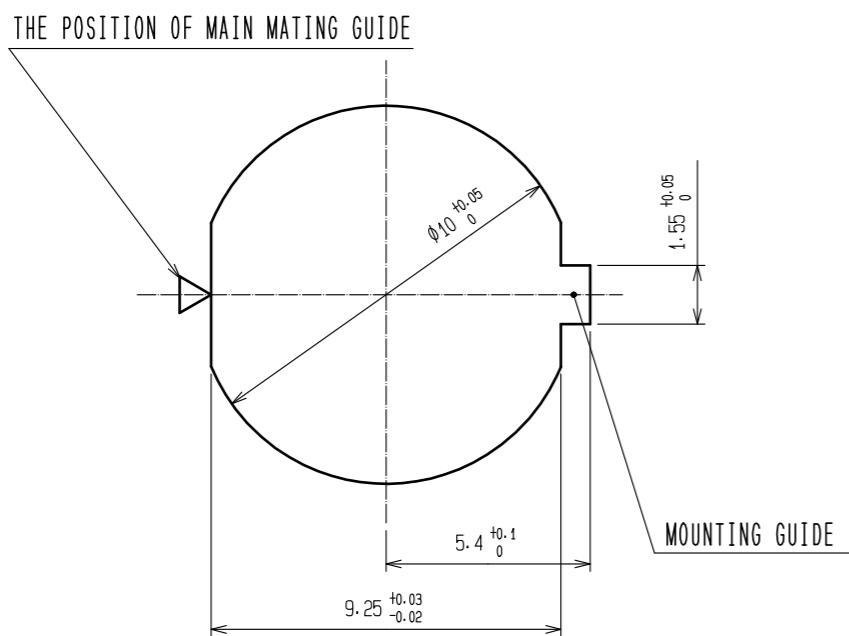


Sep.1.2021 Copyright 2021 HIROSE ELECTRIC CO., LTD. All Rights Reserved.  
In case of consideration for using Automotive equipment / device which demand high reliability, kindly contact our sales window correspondents.



PANEL CUTOUT FROM MATING FACE  
t=0.7 TO 2



NOTES 1 APPLICABLE CRIMP CONTACT :HR25-PC-211(CCL125-0420-0)  
(APPLICABLE WIRE:AWG#30,WIRE JACKET DIAMETER:φ0.71 MAX.)  
2 APPLICABLE CONTACT REMOVAL TOOL(EXTRACTION TOOL:HR25-TPCCL150-0091-0)  
3 THE RECOMMENDED TIGHTENING TORQUE OF REF.No. ⑤ TO BE 1.5N·m.  
COATING WITH LOCTITE 243 MANUFACTURED BY HENKEL JAPAN OR EQUIVALENT IS RECOMMENDED TO PREVENT LOOSENESS.

NO.	MATERIAL	FINISH . REMARKS	NO.	MATERIAL	FINISH . REMARKS
3	ETHYLENE PROPYLENE RUBBER	(BLACK)	5	BRASS	NICKEL PLATING
2	POLYPHENYLENE SULFIDE	(BLACK) UL94V-0	4	PHOSPHOR BRONZE	NICKEL PLATING
1	ZINC ALLOY	MATTE FINISH NICKEL PLATED			

UNITS	SCALE	COUNT	DESCRIPTION OF REVISIONS	DESIGNED	CHECKED	DATE
mm	5 : 1	△				
APPROVED :EJ. KUNII			15.10.14	DRAWING NO. EDC-110243-71-00		
CHECKED :EJ. KUNII			15.10.14	PART NO. HR25-9TR-20PC(71)		
DESIGNED :MM. ISHII			15.10.14	CODE NO. CL125-0412-2-71		
DRAWN :MM. ISHII			15.10.14	①/1		

# Mouser Electronics

Authorized Distributor

Click to View Pricing, Inventory, Delivery & Lifecycle Information:

[Hirose Electric:](#)

[HR25-9TR-20PC\(71\)](#)