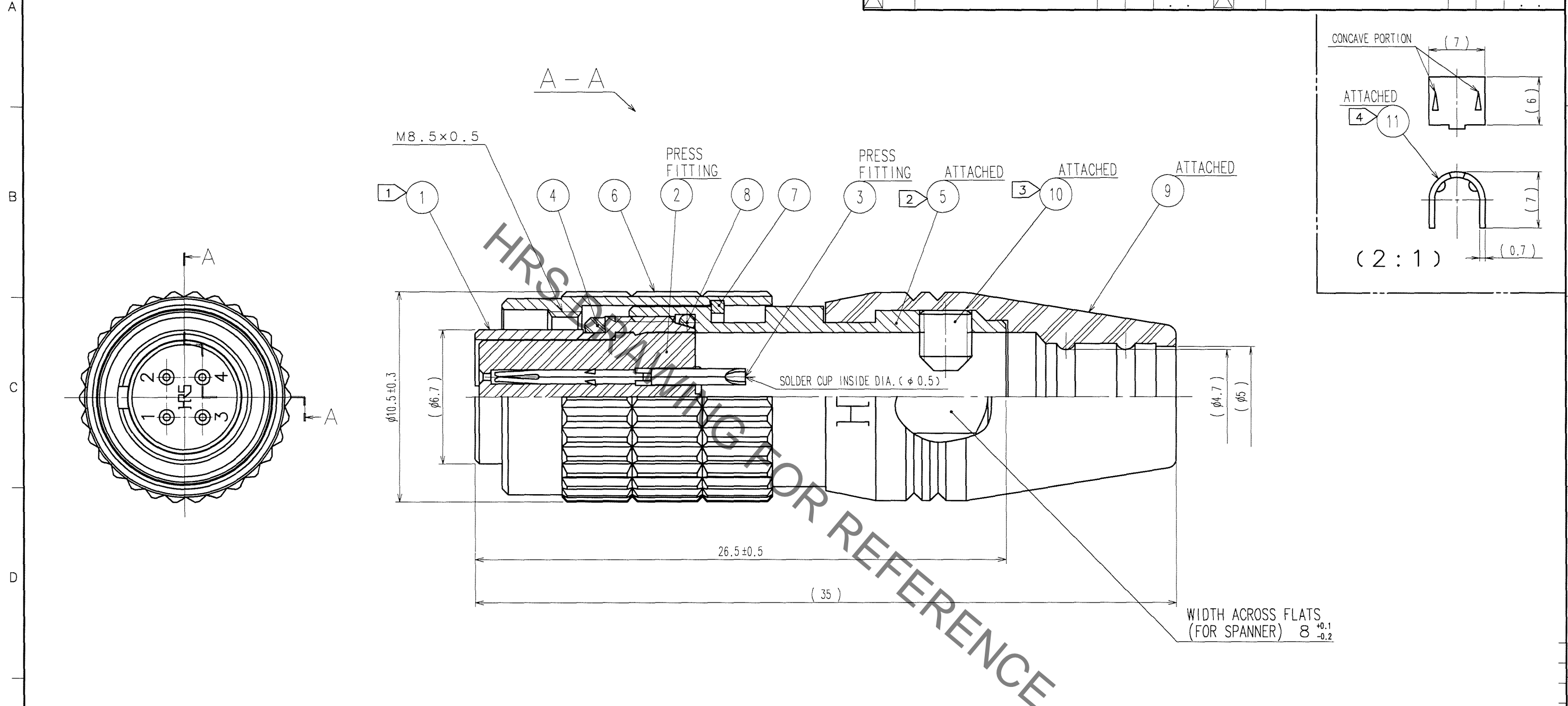


Jan.1.2022 Copyright 2022 HIROSE ELECTRIC CO., LTD. All Rights Reserved.
In case of consideration for using Automotive equipment / device which demand high reliability, kindly contact our sales window correspondents.

COUNT	DESCRIPTION OF REVISIONS	BY	CHKD	DATE	COUNT	DESCRIPTION OF REVISIONS	BY	CHKD	DATE
△					△				
△					△				
△					△				



- NOTES
- ① THREAD PORTION OF REF. No. ① IS APPLIED WITH PRECOATING TO PREVENT LOOSENESS. HOWEVER, THE ADHESIVE EFFECTIVENESS IS DECREASED WHEN REUSED. THEREFORE, THREAD PORTION IS RECOMMENDED TO COAT WITH LOCTITE 271 MANUFACTURED BY HENKEL JAPAN OR EQUIVALENT.
 - ② THE RECOMMENDED TIGHTENING TORQUE OF REF. No. ⑤ TO BE 1 N·m.
 - ③ THE TIP OF REF. No. ⑩ SHALL BE FIXED TO THE CONCAVE PORTION WITH REF. No. ⑪ CLAMPED TO THE CABLE. OPPOSITE SIDE DIMENSION OF A HEXAGON SOCKET OF REF. No. ⑩ IS 1.27mm. AND THE RECOMMENDED TIGHTENING TORQUE OF REF. No. ⑩ TO BE 0.3 TO 0.4 N·m.
 - ④ MANUAL CRIMPING TOOL OF REF. No. ⑪ : HR10A-TC-02(CL150-0041-2)(THE HOLE DIAMETER FOR CRIMPING: φ 5.3)
 - ⑤ ROTATION EXAMPLES OF REF. No. ① AND ⑤ ARE SHOWN.
 - ⑥ SURFACE PLATING : GOLD 0.2μm min.
TERMINAL PLATING: GOLD FLASH.
UNDER PLATING : NICKEL 2μm min.
 - ⑦ THE CABLE PULL AND TWISTING STRENGTH AND OTHER CHARACTERISTICS MAY DIFFER, DEPENDING ON THE CABLE STRUCTURE. PLEASE CONFIRM BEFORE THE USE.

NO.	MATERIAL	FINISH, REMARKS	NO.	MATERIAL	FINISH, REMARKS
6	BRASS	NICKEL PLATING			
5	BRASS	NICKEL PLATING	11	BRASS	
4	ETHYLENE PROPYLENE RUBBER	(BLACK)	10	STEEL	NICKEL PLATING M2.6×0.45×3
3	PHOSPHOR BRONZE	⑥	9	ETHYLENE PROPYLENE RUBBER	(BLACK)
2	POLYPHENYLENE SULFIDE	(BLACK) 94V-0	8	ETHYLENE PROPYLENE RUBBER	(BLACK)
1	ZINC ALLOY	MATTE FINISH NICKEL PLATED	7	PHOSPHOR BRONZE	NICKEL PLATING

CODE NO. (OLD) CL	DRAWN <i>M. Sato</i> 07.06.20	DESIGNED H. Kawashima 10.7.6.20	CHECKED y. Jowaden 07.06.20	APPROVED E. Kanai 07.06.20	RELEASED .
DRAWING NO. EDC3-110173-72		PART NO. HR25-7TP-4S(72)			
SCALE 2 : 1		CODE NO. CL125-0002-0-72		1 / 1	
UNITS mm		HIROSE ELECTRIC CO., LTD			

TO
R

Mouser Electronics

Authorized Distributor

Click to View Pricing, Inventory, Delivery & Lifecycle Information:

[Hirose Electric:](#)

[HR25-7TP-4S\(72\)](#)