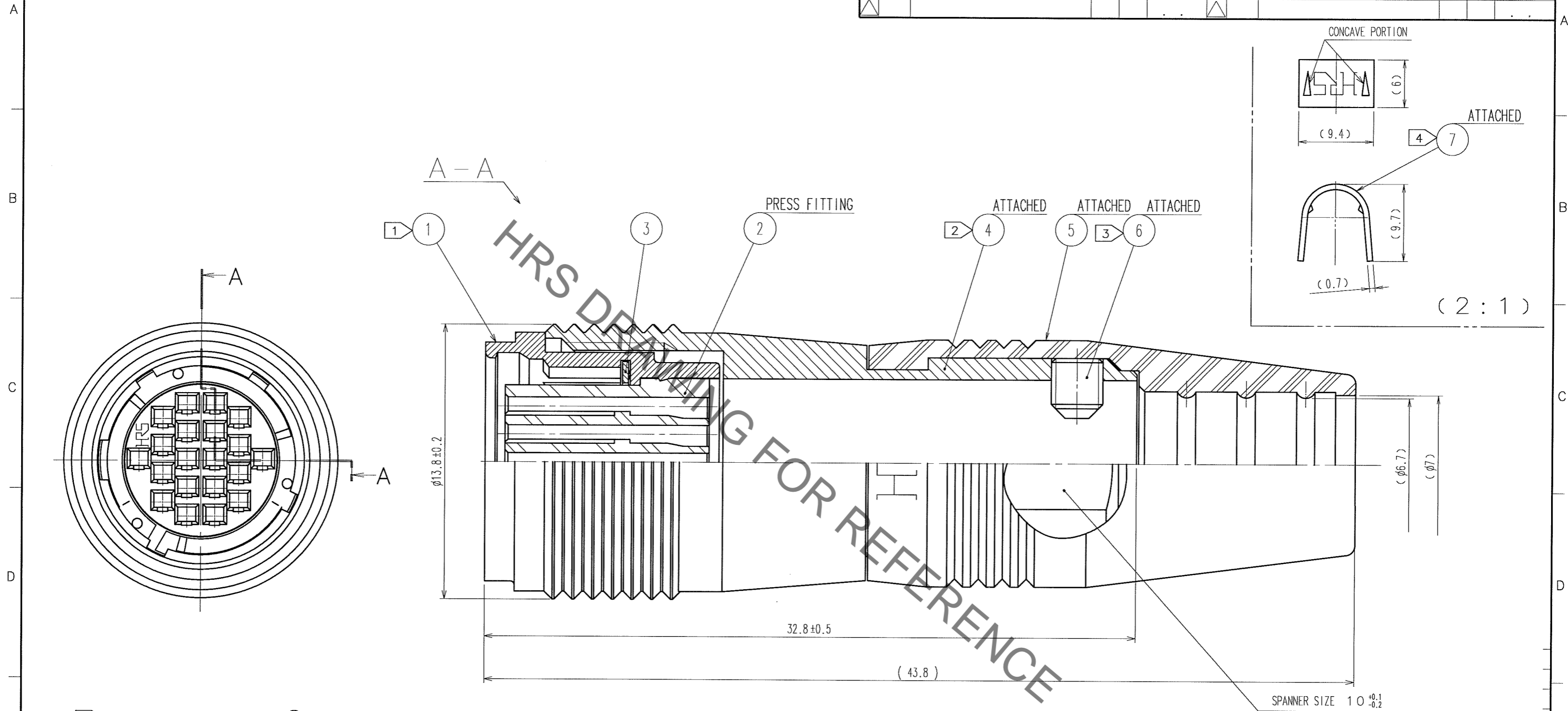


Sep.1.2021 Copyright 2021 HIROSE ELECTRIC CO., LTD. All Rights Reserved.
In case of consideration for using Automotive equipment / device which demand high reliability, kindly contact our sales window correspondents.

COUNT	DESCRIPTION OF REVISIONS	BY	CHKD	DATE	COUNT	DESCRIPTION OF REVISIONS	BY	CHKD	DATE
△					△				
△					△				
△					△				



- NOTES
- ① THREAD PORTION OF REF. No. ① IS APPLIED WITH PRECOATING TO PREVENT LOOSENESS. HOWEVER, THE ADHESIVE EFFECTIVENESS IS DECREASED WHEN REUSED. THEREFORE, THREAD PORTION IS RECOMMENDED TO COAT WITH LOCTITE 271 MANUFACTURED BY HENKEL JAPAN OR EQUIVALENT.
 - ② THE RECOMMENDED TIGHTENING TORQUE OF REF. No. ④ TO BE 1.5 N·m.
 - ③ THE TIP OF REF. No. ⑥ SHALL BE FIXED TO THE CONCAVE PORTION WITH REF. No. ⑦ CLAMPED TO THE CABLE. OPPOSITE SIDE DIMENSION OF A HEXAGON SOCKET OF REF. No. ⑥ IS 1.27mm. AND THE RECOMMENDED TIGHTENING TORQUE OF REF. No. ⑥ TO BE 0.3 TO 0.4 N·m.
 - ④ MANUAL CRIMPING TOOL OF REF. No. ⑦ : HR10A-TC-02 (THE HOLE DIAMETER FOR CRIMPING: φ 7)
 - ⑤ ROTATION EXAMPLES OF REF. No. ① AND ④⑤ ARE SHOWN.
 - ⑥ APPLICABLE CRIMP CONTACT: HR25-SC-111 (CL125-0421-3) (AWG#30, JACKET OUTSIDE DIA: 0.71 MAX.)
 - ⑦ APPLICABLE CRIMP CONTACT EXTRACTION TOOL: HR25-TP (CL125-0091-0)
 - ⑧ THE CABLE PULL AND TWISTING STRENGTH AND OTHER CHARACTERISTICS MAY DIFFER, DEPENDING ON THE CABLE STRUCTURE. PLEASE CONFIRM BEFORE THE USE.

4	BRASS	MATTE FINISH NICKEL PLATING	7	BRASS	
3	BERYLLIUM COPPER	NICKEL PLATING	6	STEEL	NICKEL PLATING M2.6×0.45×3
2	POLYPHENYLENE SULFIDE	(BLACK) 94V-0	5	ETHYLENE PROPYLENE RUBBER	(BLACK)
1	ZINC ALLOY	MATTE FINISH NICKEL PLATING			
NO.	MATERIAL	FINISH, REMARKS	NO.	MATERIAL	FINISH, REMARKS

CODE NO. (OLD) CL	DRAWN <i>M. Sato</i> 06.09.27	DESIGNED <i>G. Yamada</i> 06.09.28	CHECKED /	APPROVED <i>M. Sato</i> 06.09.29	RELEASED /
DRAWING NO. EDC3-115102		PART NO. HR25A-9J-20SC			
SCALE 5 : 1		CODE NO. CL125-0660-4-00		1 / 1	
UNITS mm		HRS HIROSE ELECTRIC CO., LTD.			

Mouser Electronics

Authorized Distributor

Click to View Pricing, Inventory, Delivery & Lifecycle Information:

[Hirose Electric:](#)

[HR25A-9J-20SC](#)